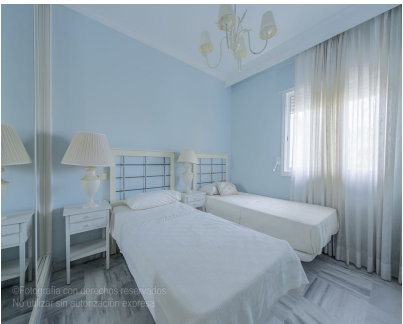


Sales - Apartment - Puerto Banús
525.000€



Ref.-ID: MIBGR5131972

Puerto Banús

Apartment

Community: 1,224 EUR / year

IBI: 929 EUR / year



2



2



80 m2

Bright two-bedroom, two-bathroom penthouse located in La Dama de Noche, one of the most exclusive and sought-after residential complexes in the area. Just one kilometre from the beach and Puerto Banús, it offers the tranquillity of a residential setting along with the convenience of having all services close at hand. Situated on the fourth floor with lift access, it features 81 m² of interior space laid out in a practical and functional way, along with an impressive 77 m² southeast-facing terrace, perfect for enjoying the sun, relaxing outdoors, or spending time with family and friends, all while taking in the pleasant open mountain views. Inside, the marble floors and bathrooms, generous fitted wardrobes, and a spacious, bright living room create a warm and comfortable atmosphere for everyday living. The property includes a parking space and is set within a community offering two swimming pools, extensive landscaped gardens, a children's play area, 24-hour security, and concierge service. Its location provides excellent connections to Marbella, San Pedro, and Nueva Andalucía, and is surrounded by shops, restaurants, and sports facilities, making it an ideal choice both as a permanent residence or an investment., Marbella, Costa del Sol. Built 0 m². Setting : Commercial Area, Close To Golf, Close To Port, Close To Shops, Close To Sea, Close To Schools, Marina, Close To Marina, Urbanisation. Orientation : East. Condition : Good. Pool : Communal. Views : Mountain, Panoramic. Features : Lift, Fitted Wardrobes, Near Transport, Private Terrace, Paddle Tennis, Tennis Court, Ensuite Bathroom, Marble Flooring, Restaurant On Site, Near Church. Furniture : Optional. Kitchen : Partially Fitted. Garden : Communal. Security : Gated Complex, Entry Phone, 24 Hour Security. Parking : Underground, Private. Category : Resale.

Setting <ul style="list-style-type: none">✓ Commercial Area✓ Close To Port✓ Close To Shops✓ Close To Sea✓ Close To Schools✓ Marina✓ Close To Marina✓ Urbanisation	Orientation <ul style="list-style-type: none">✓ East	Condition <ul style="list-style-type: none">✓ Good	Pool <ul style="list-style-type: none">✓ Communal	Views <ul style="list-style-type: none">✓ Mountain✓ Panoramic	Features <ul style="list-style-type: none">✓ Lift✓ Fitted Wardrobes✓ Near Transport✓ Private Terrace✓ Paddle Tennis✓ Tennis Court✓ Ensuite Bathroom✓ Marble Flooring✓ Restaurant On Site✓ Near Church
Furniture <ul style="list-style-type: none">✓ Optional	Kitchen <ul style="list-style-type: none">✓ Partially Fitted	Garden <ul style="list-style-type: none">✓ Communal	Security <ul style="list-style-type: none">✓ Gated Complex✓ Entry Phone✓ 24 Hour Security	Parking <ul style="list-style-type: none">✓ Underground✓ Private	Category <ul style="list-style-type: none">✓ Resale