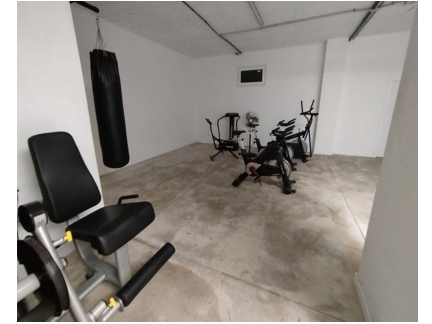


Sales - Apartment - Benalmadena Costa
660.000€



Ref.-ID: MIBGR5251447

Benalmadena Costa

Apartment

Community: 3,240 EUR / year



TWO ADJACENT APARTMENTS FOR SALE IN BENALMÁDENA - POSSIBILITY OF COMBINING THEM Two adjacent apartments are for sale in one of the most sought-after areas of Benalmádena. They can be easily combined by simply removing a partition wall. A unique opportunity to create a spacious home or to invest in two separate properties within the same complex. Key Features: Unobstructed views and excellent orientation. Large terrace, ideal for enjoying the outdoors. Four parking spaces included in the price. Apartments in perfect condition, ready to move in. Current combined layout: Two spacious living rooms Two fully equipped and furnished kitchens Four bedrooms Two bathrooms Common areas of the complex: Private and quiet residential complex. Communal swimming pool. Large landscaped common areas. Gym for the exclusive use of residents. Prime location: Situated in a well-established residential area, close to green spaces, golf courses, shops, supermarkets, public transport, and with excellent access to the highway. Come and see them for yourself! An exceptional opportunity for families seeking more space or for investors looking for a versatile and highly sought-after property. In accordance with Decree 218/2005 of October 11, which approves the Regulation on Consumer Information in the Sale and Rental of Housing in Andalusia, the client is hereby informed that notary fees, registration fees, property transfer tax (ITP), and other expenses inherent to the sale or rental are not included in the price. Brokerage fees are included in the price. The information provided, including surface areas, prices, conditions, and availability of the property, is for informational purposes only and does not constitute a binding contractual offer. It may be subject to change without prior notice, and the availability of the property must be confirmed at the time of inquiry. Energy performance certificate pending.

- | | | | | | |
|--------------------------------------|------------------------------------|---|---------------------------|--------------------------|---|
| Setting
✓ Close To Schools | Orientation
✓ South East | Condition
✓ Good | Pool
✓ Communal | Views
✓ Street | Features
✓ Lift
✓ Fitted Wardrobes
✓ Near Transport
✓ Private Terrace
✓ Gym |
| Kitchen
✓ Fully Fitted | Garden
✓ Communal | Parking
✓ Garage
✓ More Than One | | | |