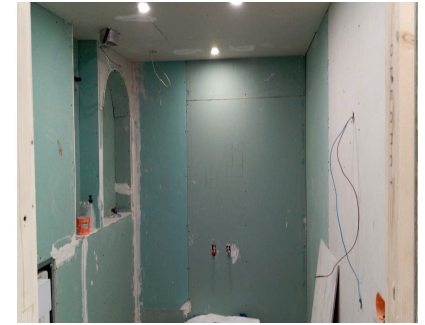


Sales - Apartment - Puerto Banús
520.000€



Ref.-ID: MIBGR5296324

Puerto Banús

Apartment



2



1



79 m2

Prime Apartment in the Heart of Puerto Banús, Marbella – Frontline Beach Location with Endless Potential! Seize this exceptional opportunity to own a 79 m² apartment in the glamorous epicentre of Puerto Banús, Marbella's iconic luxury marina on the Costa del Sol – renowned for its opulent yachts, supercars, and celebrity sightings. Steps from the golden sands of Playa de Levante and Playa del Duque, this frontline beach property immerses you in a vibrant lifestyle surrounded by high-end designer boutiques (Louis Vuitton, Gucci, Dolce & Gabbana), upscale shopping centres like Marina Banus and El Corte Inglés, Michelin-starred restaurants, trendy beach clubs, and pulsating nightlife. Perfectly positioned along the famous Golden Mile, it's just a short stroll to gourmet dining, exclusive lounges, and the marina's jet-set atmosphere, with easy access to Marbella's Old Town, world-class golf courses, and attractions like the Fly Blue Catamaran rides. Currently undergoing reforms, this second-hand gem on the second floor (with lift) offers two bedrooms, one bathroom, a kitchen, living room, and a charming small balcony overlooking the bustling main street of Banús – ideal for people-watching in this affluent hotspot. North-facing for cooler, comfortable living, it presents a blank canvas to finish to your personal taste, blending modern luxury with the area's Andalusian charm. Priced at €520,000 – a rare chance to invest in Puerto Banús' high-demand market, whether as a holiday retreat, permanent residence, or lucrative rental property.

Setting

- ✓ Beachfront
- ✓ Town
- ✓ Commercial Area
- ✓ Beachside
- ✓ Port
- ✓ Close To Port
- ✓ Close To Shops
- ✓ Close To Sea
- ✓ Close To Town
- ✓ Close To Schools
- ✓ Marina
- ✓ Close To Marina
- ✓ Front Line Beach Complex

Furniture

- ✓ Not Furnished

Orientation

- ✓ North

Kitchen

- ✓ Not Fitted

Condition

- ✓ Renovation Required

Parking

- ✓ Street

Climate Control

- ✓ Pre Installed A/C

Category

- ✓ Beachfront

Views

- ✓ Garden
- ✓ Courtyard
- ✓ Urban
- ✓ Street

Features

- ✓ Lift
- ✓ Near Transport
- ✓ Access for people with reduced mobility
- ✓ Marble Flooring
- ✓ Double Glazing
- ✓ Near Church