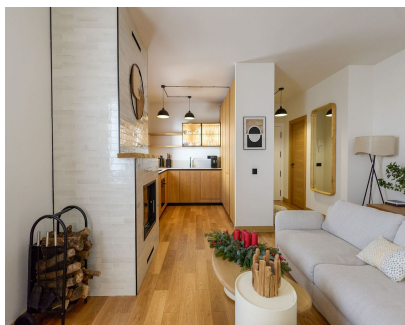


Sales - Apartment - Puerto Banús

1.100.000€



Ref.-ID: MIBGR5307889

Puerto Banús

Apartment

Community: 3,180 EUR / year

IBI: 1,190 EUR / year

Rubbish: 186 EUR / year



2



2



118 m2

Elegant Modern Apartment Located in the heart of Puerto Banús, within the prestigious beachfront complex Playas del Duque, this fully renovated two-bedroom apartment offers one of the most sought-after addresses on the Costa del Sol. The development is known for its direct beach access, mature tropical gardens, three large swimming pools, 24-hour security, private residents' restaurant and gym. Everything is within walking distance: the marina, luxury boutiques, fine dining restaurants and beach clubs. The apartment has a built area of 118 m² and benefits from a south-facing orientation, ensuring natural light throughout the day. The spacious living and dining area has been intelligently redesigned, incorporating the former terrace into the interior to create additional usable living space. A small open balcony remains, allowing partial sea views and fresh coastal air. The property offers two well-proportioned bedrooms. The master bedroom includes generous wardrobe space and an en-suite bathroom. The second bedroom is equally comfortable and served by a separate full bathroom. The kitchen is fully equipped with modern appliances and finished in a clean, contemporary style. An underground parking space is included, which is a significant advantage in this prime location. The apartment is presented in turnkey condition and ready for immediate use.

Setting

- ✓ Close To Shops
- ✓ Close To Sea
- ✓ Close To Town
- ✓ Close To Marina
- ✓ Urbanisation

Features

- ✓ Lift
- ✓ Fitted Wardrobes
- ✓ Near Transport
- ✓ Private Terrace

Category

- ✓ Investment

Orientation

- ✓ South

Furniture

- ✓ Fully Furnished

Condition

- ✓ Excellent
- ✓ Recently Renovated

Kitchen

- ✓ Fully Fitted

Pool

- ✓ Communal

Garden

- ✓ Communal

Climate Control

- ✓ Air Conditioning
- ✓ Fireplace

Security

- ✓ Gated Complex

Views

- ✓ Sea
- ✓ Garden
- ✓ Urban

Parking

- ✓ Private