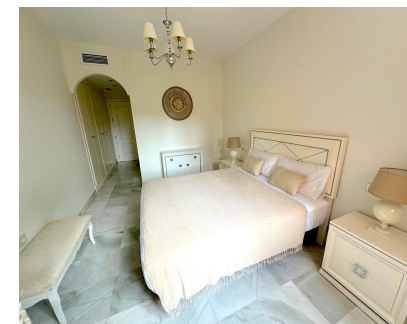
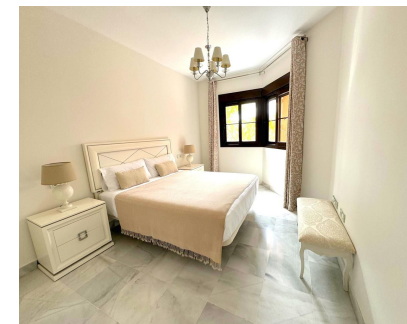


**Short Term Rental - Apartment - Hacienda del Sol**  
**1.500€ / Week**



**Ref.-ID: MIBGR4995247**

**Hacienda del Sol**

**Apartment**



**2**



**2**



**120 m2**

2-bedroom, 2-bathroom apartment in Urb Hacienda del Sol. Development with 24-hour security and reception. Tropical gardens with 6 swimming pools, a large jacuzzi, a gym, and paddle tennis courts. Beachside. Walking distance to amenities, the shopping center, and the beach. Located in Atalaya Playa, just 5 minutes from Puerto Banús. For seasonal rent only. Monthly. Minimum 1 month.

<b>Setting</b> <ul style="list-style-type: none"> <li>✓ Commercial Area</li> <li>✓ Beachside</li> <li>✓ Close To Golf</li> <li>✓ Close To Shops</li> <li>✓ Close To Sea</li> <li>✓ Close To Schools</li> <li>✓ Close To Forest</li> <li>✓ Urbanisation</li> </ul>	<b>Orientation</b> <ul style="list-style-type: none"> <li>✓ South</li> </ul>	<b>Condition</b> <ul style="list-style-type: none"> <li>✓ Excellent</li> <li>✓ Good</li> </ul>	<b>Pool</b> <ul style="list-style-type: none"> <li>✓ Communal</li> <li>✓ Children`s Pool</li> </ul>	<b>Climate Control</b> <ul style="list-style-type: none"> <li>✓ Air Conditioning</li> <li>✓ Fireplace</li> </ul>	<b>Views</b> <ul style="list-style-type: none"> <li>✓ Panoramic</li> <li>✓ Garden</li> </ul>
<b>Features</b> <ul style="list-style-type: none"> <li>✓ Covered Terrace</li> <li>✓ Lift</li> <li>✓ Fitted Wardrobes</li> <li>✓ Near Transport</li> <li>✓ Private Terrace</li> <li>✓ Satellite TV</li> <li>✓ WiFi</li> <li>✓ Gym</li> <li>✓ Sauna</li> <li>✓ Paddle Tennis</li> <li>✓ Tennis Court</li> <li>✓ Utility Room</li> <li>✓ Ensuite Bathroom</li> <li>✓ Access for people with reduced mobility</li> <li>✓ Marble Flooring</li> <li>✓ Jacuzzi</li> <li>✓ Double Glazing</li> <li>✓ 24 Hour Reception</li> <li>✓ Courtesy Bus</li> <li>✓ Fiber Optic</li> </ul>	<b>Furniture</b> <ul style="list-style-type: none"> <li>✓ Fully Furnished</li> </ul>	<b>Kitchen</b> <ul style="list-style-type: none"> <li>✓ Fully Fitted</li> </ul>	<b>Garden</b> <ul style="list-style-type: none"> <li>✓ Communal</li> <li>✓ Landscaped</li> </ul>	<b>Security</b> <ul style="list-style-type: none"> <li>✓ Gated Complex</li> <li>✓ 24 Hour Security</li> <li>✓ Safe</li> </ul>	<b>Parking</b> <ul style="list-style-type: none"> <li>✓ Underground</li> <li>✓ Garage</li> <li>✓ Private</li> </ul>
<b>Category</b> <ul style="list-style-type: none"> <li>✓ Beachfront</li> <li>✓ Golf</li> <li>✓ Holiday Homes</li> </ul>					