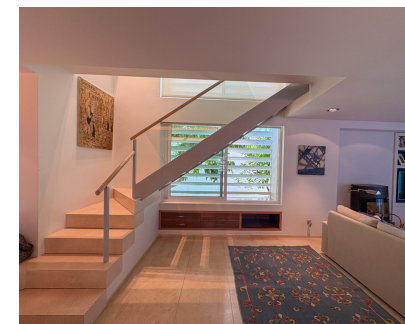


Short Term Rental - House - Nueva Andalucía
875€ / Week



Ref.-ID: MIBGR5115718

Nueva Andalucía

House



Available for seasonal rent FROM SEPTEMBER TO JUNE 2026 Located within Aloha Golf Club, this wonderful townhouse features stunning views to La Concha Mountain. The property is distributed over 2 levels. On the ground floor, we find a bright L-shaped fully equipped open plan kitchen with top of the range appliances and views to the garden, a guest toilet and an ample living-dining room that leads to a lovely 24m2 terrace and to the garden. This area features dining and chill-out area to enjoy the fantastic views to La Concha mountain and the sun. Additionally, the property has a front patio with a large storage/laundry area. Upstairs there are 2 bedrooms. Both of them boasts an ensuite bathroom and large fitted wardrobes. The property also enjoys a private parking space. Additional features include a communal swimming pool with great views, lush gardens, A/C and east orientation. Peñablanca is a traditional urbanisation that boasts a unique charm throughout, having the lively atmosphere of Puerto Banus and its sandy beaches just 5 minutes driving away. There is a short distance to amenities, such as supermarkets or the prestigious Aloha College Marbella, which is 5 minutes walking from the property. The house is great for golf lovers. In addition to being located within the golf course of Aloha, the complex of Peñablanca is situated in the heart of Nueva Andalucia's Golf Valley, just minutes from other highly recognised courses such as Real Club de Golf Las Brisas, Los Naranjos Golf Club and Magna Marbella Golf. Only about 10 minutes driving to the centre of Marbella and 20 minutes to Estepona. The international airport of Malaga is approximately 50 minutes by car. The existing microclimate in Marbella, with mild winters and not excessively hot summers, is unique in the world, which allows it to enjoy more than 320 days of sunshine a year. It is one of the most popular destinations in Spain, its attractiveness makes this destination one of the most desired by tourists from around the world. Its coastline, which runs for more than 27 km, has a total of 23 beaches. Damage deposit: 1 month

Setting

- ✓ Frontline Golf
- ✓ Close To Golf
- ✓ Close To Schools

Features

- ✓ Covered Terrace
- ✓ Fitted Wardrobes
- ✓ Private Terrace
- ✓ WiFi
- ✓ Storage Room
- ✓ Utility Room
- ✓ Ensuite Bathroom
- ✓ Wood Flooring

Category

- ✓ Golf
- ✓ Luxury

Orientation

- ✓ South West

Furniture

- ✓ Optional

Condition

- ✓ Excellent

Kitchen

- ✓ Partially Fitted

Pool

- ✓ Communal

Garden

- ✓ Communal

Climate Control

- ✓ Air Conditioning

Security

- ✓ Gated Complex
- ✓ Alarm System

Views

- ✓ Mountain
- ✓ Golf

Parking

- ✓ Private