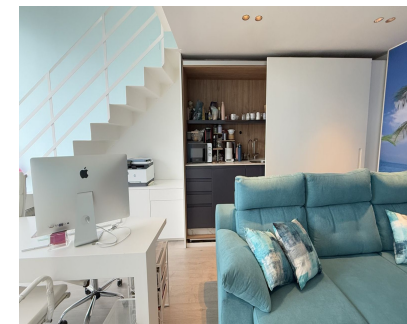


## Long Term Rental - Commercial - Nueva Andalucía

### 1.700€ / Month



Ref.-ID: MIBGR4946365

Nueva Andalucía

Commercial



2



1



52 m2

OFFICE TRANSFER IN AZALEA BEACH, PRIME LOCATION NEAR PUERTO BANÚS An office traspaso is available in the exclusive Azalea Beach commercial center, one of the most sought-after areas near Puerto Banús, where available spaces are extremely rare. Office Features: ✓ Prime location with high foot and vehicle traffic ✓ Total area: 52 m² Ground floor: 33.58 m² Upper floor: 18.4 m² ✓ 1 bathroom ✓ Modern interior with a functional layout ✓ Ideal for various business activities Financial Details: Traspaso Price: €40,000 Rent: €1,700 + IVA + water and light bills Don't miss this unique opportunity to establish your business in Azalea Beach! Contact us for more details or to schedule a viewing.

#### Setting

- ✓ Commercial Area
- ✓ Close To Port
- ✓ Close To Shops
- ✓ Close To Schools

#### Furniture

- ✓ Fully Furnished

#### Orientation

- ✓ North

#### Security

- ✓ Alarm System

#### Condition

- ✓ Excellent

#### Parking

- ✓ Street

#### Climate Control

- ✓ Air Conditioning

#### Views

- ✓ Mountain
- ✓ Urban
- ✓ Street

#### Features

- ✓ Near Transport
- ✓ WiFi
- ✓ Fiber Optic