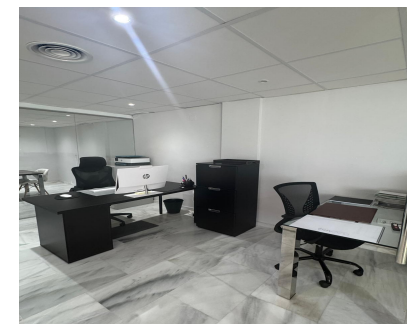
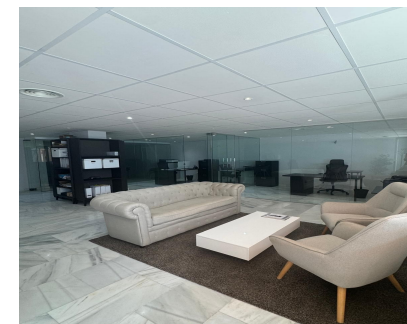


Long Term Rental - Commercial - Nueva Andalucía

1.900€ / Month



Ref.-ID: MIBGR5018251

Nueva Andalucía

Commercial



1



92 m2

Nestled in the renowned Magna Marbella development, this office represents an exceptional opportunity to establish your business in one of the most sought-after and exclusive locations in Nueva Andalucía. Located within a gated community, the office is part of an established business ecosystem that already boasts prestigious aesthetic clinics, high-end medical practices, tax and legal consultancies, luxury real estate agencies, and other offices that provide prestige, trust, and synergy on a daily basis. The space boasts an efficient and thoughtful layout, including a welcoming reception area perfect for welcoming clients with the right image, a spacious and versatile meeting room, a fully equipped kitchen for internal use, a private bathroom, and a flexible work area that adapts to different needs: from a private practice to a full team of professionals. All with neutral and elegant finishes that allow for easy customization of the environment. The building also offers adapted access, a concierge service, and 24-hour security, ensuring comfort, smooth operations, and peace of mind for both professionals and clients. In the immediate surroundings, you'll find not only complementary businesses but also cafes, restaurants, and shops, providing dynamic and convenient options for your daily life. The proximity to Puerto Banús—just a few minutes by car—and easy access to a local and international clientele with high purchasing power make this location a strategic enclave for projecting a strong, professional, and distinctive image. If you're looking for a place to work, but also to be inspired, connect, and grow, this office in Magna Marbella is waiting for you.

- Setting**
- ✓ Frontline Golf
 - ✓ Commercial Area
 - ✓ Beachside
 - ✓ Close To Golf
 - ✓ Close To Port
 - ✓ Close To Shops
 - ✓ Close To Sea
 - ✓ Close To Town
 - ✓ Close To Schools
 - ✓ Close To Forest
 - ✓ Close To Marina
 - ✓ Urbanisation

Condition

✓ Excellent

Pool

✓ Communal

Climate Control

✓ Air Conditioning

Kitchen

✓ Fully Fitted

Category

✓ Golf

✓ Investment