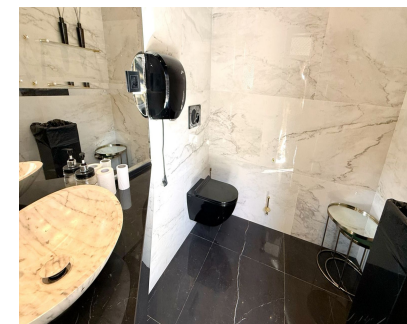


## Long Term Rental - Commercial - Puerto Banús

### 5.000€ / Month



**Ref.-ID: MIBGR5191627**

**Puerto Banús**

**Commercial**



**2**



**2**



**120 m2**

Prime Commercial Space for Rent in Puerto Banús - With Open Terrace! □ Looking for a standout location for your business? This exceptional 120 sqm commercial unit is now available for rent in the prestigious Red Line zone of Puerto Banús, just a few steps from El Corte Inglés — one of the busiest and most exclusive areas on the Costa del Sol. Key Features: 120 sqm Interior Space - Ideal for Restaurant, Café, Bar, or Retail Open Terrace for Visitors - Perfect for Outdoor Dining or Lounge Setup Red Line Commercial Zone - Maximum Visibility & Constant Foot Traffic Easy Access & Nearby Parking Facilities This location attracts high-end clientele and international visitors daily — the perfect setting to elevate your brand and ensure strong returns. Puerto Banús - Near El Corte Inglés 120 sqm + Open Terrace Contact us now to arrange a viewing — Premium spaces like this are rarely available!