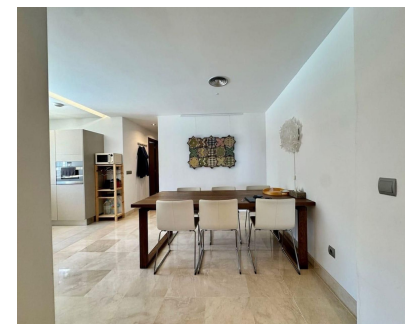
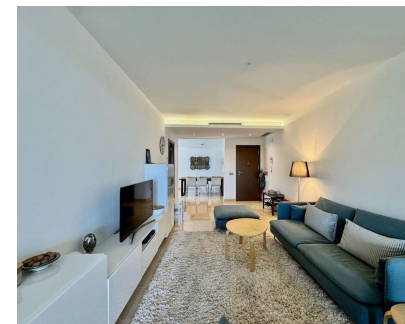


Long Term Rental - Apartment - La Mairena
2.500€ / Month



Ref.-ID: MIBGR5243830

La Mairena

Apartment



3



2



103 m2

Exceptional Ground Floor Apartment With Panoramic Sea Views in La Mairena – Marbella Nestled within a UNESCO Biosphere Reserve, this stunning ground-floor apartment offers a rare combination of natural beauty, tranquility, and breathtaking panoramic sea views. Located in the sought-after area of La Mairena (Marbella), this home provides a serene lifestyle surrounded by lush greenery while remaining just minutes from the coast. Property Features: - 3 spacious bedrooms and 2 full bathrooms - Approx. 103 m² interior built area - 31 m² terrace with fully retractable glass sliding doors—enjoy an all-season outdoor living space - Private southwest-facing garden: exceptional sunlight throughout the day, even in winter - Direct access to the beautiful community pool through a convenient private side gate - Bright, open living spaces with seamless indoor-outdoor flow - Stunning sea and forest views from both the terrace and garden Lifestyle & Surroundings: Located in one of Marbella’s most peaceful and natural settings, this apartment offers a rare escape without compromising convenience. In just 8–10 minutes you can reach the popular beaches of Elviria, known for their lively atmosphere, beach clubs, and amenities. El Soto Golf Club – Membership Included: - As a resident, you enjoy unlimited access to the prestigious El Soto Golf Club, featuring: - 9-hole golf course - Tennis court - Paddle court - Fully equipped gym - Spa & wellness facilities - Clubhouse with restaurant and social areas => All just 2 minutes by car or a 12-minute walk from the gated community. A Perfect Home for Nature Lovers, Golfers & Peace Seekers. Whether you're looking for a permanent residence, a holiday home, or a high-return investment property, this apartment offers unmatched value in one of Marbella’s most enchanting landscapes. Available from January, 7th 2026! Long term: €2.500/month

Setting <div>✔ Close To Golf</div> <div>✔ Urbanisation</div>	Orientation <div>✔ South West</div>	Condition <div>✔ Excellent</div> <div>✔ Recently Refurbished</div>	Pool <div>✔ Communal</div>	Climate Control <div>✔ Air Conditioning</div>	Views <div>✔ Sea</div> <div>✔ Mountain</div> <div>✔ Panoramic</div>
Features <div>✔ Private Terrace</div>	Furniture <div>✔ Fully Furnished</div>	Kitchen <div>✔ Fully Fitted</div>	Garden <div>✔ Communal</div> <div>✔ Private</div>	Parking <div>✔ Underground</div>	Category <div>✔ Contemporary</div>