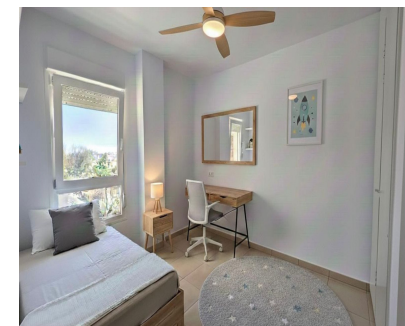


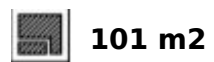
Long Term Rental - Apartment - La Campana
2.250€ / Month



Ref.-ID: MIBGR5325430

La Campana

Apartment



Bright apartment available for long-term rental in Nueva Andalucía - La Campana, Marbella, located in a convenient and well-connected residential area surrounded by everyday amenities and just a short distance from Puerto Banús and Marbella town centre. The property offers 101 m² of built space, distributed across 3 bedrooms and 2 bathrooms, providing comfortable and functional living areas ideal for families or anyone looking to enjoy year-round living in a peaceful Marbella neighbourhood. Situated on the 5th exterior floor with lift access, the apartment benefits from excellent natural light and pleasant sea views, as well as a south-facing orientation that allows sunlight to fill the home throughout the day. The apartment features a comfortable living room with access to a balcony, perfect for enjoying the Mediterranean climate. The kitchen is fully equipped and the property is offered fully furnished, ready to move in. The bedrooms include built-in wardrobes, providing ample storage space. For added comfort, the property is equipped with individual hot and cold air conditioning units in each room, ensuring a pleasant indoor temperature all year round. The rental also includes a spacious private parking space, an important benefit in this area. The building offers lift access and an adapted exterior entrance for people with reduced mobility. The location is one of the key highlights of this property. Located in La Campana, Nueva Andalucía, the apartment is close to schools, supermarkets, restaurants and a bus stop, all within walking distance. In addition, Puerto Banús is only 5 minutes away by car and Marbella town centre approximately 10 minutes, allowing easy access to beaches, leisure options and the best of the Costa del Sol lifestyle. An excellent opportunity for those seeking a long-term rental in Marbella, offering comfort, natural light and a highly convenient location.

Setting

- ✓ Port
- ✓ Close To Marina
- ✓ Urbanisation

Orientation

- ✓ South

Condition

- ✓ Excellent
- ✓ Good

Climate Control

- ✓ Air Conditioning

Views

- ✓ Sea
- ✓ Beach
- ✓ Port

Features

- ✓ Covered Terrace
- ✓ Lift
- ✓ Fitted Wardrobes
- ✓ Private Terrace
- ✓ Access for people with reduced mobility

Furniture

- ✓ Fully Furnished

Kitchen

- ✓ Fully Fitted

Security

- ✓ Gated Complex

Utilities

- ✓ Electricity
- ✓ Drinkable Water
- ✓ Telephone

Category

- ✓ Cheap
- ✓ Luxury