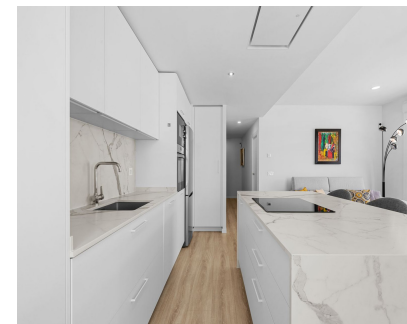


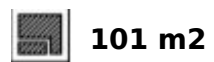
Long Term Rental - Apartment - Nueva Andalucía
2.500€ / Month



Ref.-ID: MIBGR5374060

Nueva Andalucía

Apartment



Conditions: * 11-month renewable contract * 1 month security deposit (fianza) * 2 months additional guarantee * Last 3 payslips required * Latest tax return required * Proof of financial solvency required Preferred Tenant Profile: Tenants whose main residence is abroad Utilities Not Included: Water, electricity, internet Pets: Not allowed

Stunning New 2-Bedroom Apartment in La Campana - Nueva Andalucía | Sea & La Concha Views Discover this beautiful brand-new apartment located in La Campana, in the heart of Nueva Andalucía, within a modern and perfectly maintained residential complex, ideally situated within walking distance of all amenities. South-facing, the apartment enjoys exceptional natural light throughout the day, creating a warm and elegant atmosphere in every room. The property features 2 stylish bedrooms and 2 modern bathrooms, along with a fully equipped and customized kitchen, complemented by a separate laundry area. The apartment boasts a spacious wrap-around terrace, perfect for enjoying the Mediterranean lifestyle, offering open views stretching all the way to the sea and the iconic La Concha mountain. High-quality finishes include window shutters, an alarm system, full premium furnishings, and excellent space optimization throughout. The property includes: * 1 private underground parking space * 1 storage room * Option to rent a second parking space at an additional cost The residence offers a communal swimming pool with spectacular sea and mountain views, providing a privileged living environment, as well as access to a fully equipped gym. Ideally located, you will benefit from immediate walking access to all amenities: supermarkets, pharmacies, restaurants, cafés, schools, and quick access to Puerto Banús and the beach.

- | | | | | | |
|---|---|---|---|---|--|
| <p>Setting</p> <ul style="list-style-type: none"> ✓ Town ✓ Commercial Area ✓ Close To Shops ✓ Close To Sea ✓ Close To Town ✓ Close To Schools ✓ Urbanisation | <p>Orientation</p> <ul style="list-style-type: none"> ✓ South | <p>Condition</p> <ul style="list-style-type: none"> ✓ Excellent ✓ New Construction | <p>Pool</p> <ul style="list-style-type: none"> ✓ Communal | <p>Climate Control</p> <ul style="list-style-type: none"> ✓ Air Conditioning ✓ Central Heating | <p>Views</p> <ul style="list-style-type: none"> ✓ Sea ✓ Mountain ✓ Garden |
| <p>Features</p> <ul style="list-style-type: none"> ✓ Covered Terrace ✓ Lift ✓ Near Transport ✓ Private Terrace ✓ Solarium ✓ WiFi ✓ Gym ✓ Storage Room ✓ Ensuite Bathroom ✓ Access for people with reduced mobility ✓ Double Glazing | <p>Furniture</p> <ul style="list-style-type: none"> ✓ Fully Furnished | <p>Kitchen</p> <ul style="list-style-type: none"> ✓ Fully Fitted | <p>Garden</p> <ul style="list-style-type: none"> ✓ Communal | <p>Security</p> <ul style="list-style-type: none"> ✓ Gated Complex ✓ Entry Phone ✓ Alarm System | <p>Parking</p> <ul style="list-style-type: none"> ✓ Underground ✓ Garage ✓ Private |