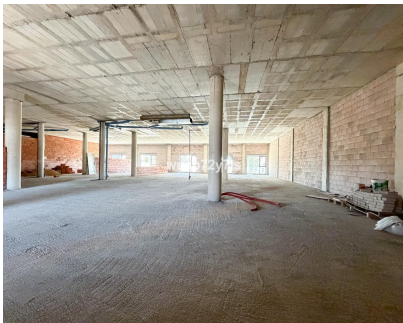


Long Term Rental - Commercial - El Paraiso

8.550€ / Month



Ref.-ID: MIBGR5400088

El Paraiso

Commercial

 **560 m²**

Large Commercial Premises for Rent in Estepona – 560 m² – €15/m² Excellent opportunity to rent a large commercial premises located in Edificio Altair, on Avenida Jábega in Estepona. The property consists of four commercial units with a combined commercial-use area of 560 m², offering a spacious and flexible layout suitable for a wide range of business activities. The premises are currently in shell condition, giving the future tenant the possibility to design and adapt the space according to their own business concept, layout requirements and operational needs. The open-plan structure, generous dimensions and multiple access points make it ideal for companies looking for a large commercial surface in a well-connected area of Estepona. The property benefits from high ceilings, large open areas, natural light from several façade openings and an unfinished interior ready for full customisation. This makes it especially attractive for businesses that require a tailor-made fit-out, such as offices, showroom, training centre, medical or wellness centre, retail, storage, gym, professional services or other commercial uses, subject to licence approval. Located in a modern commercial building with established businesses already operating above, the premises enjoy great visibility from the A-7 highway, offering excellent exposure for future business branding. The exterior area also offers convenient parking directly in front of the building, which is a strong advantage for clients, staff and suppliers. The property is offered at €15/m², making it an interesting option for businesses seeking a large and adaptable commercial space in Estepona. A versatile commercial opportunity with excellent potential for companies looking to create a customised business premises in a strategic location. Commercial-use m² without common elements • Local 1: 188 m² • Local 2: 124 m² • Local 3: 124 m² • Local 4: 124 m² => Total: 560 m²

