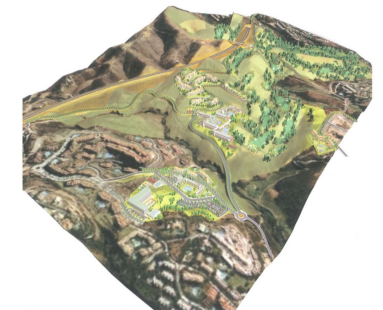
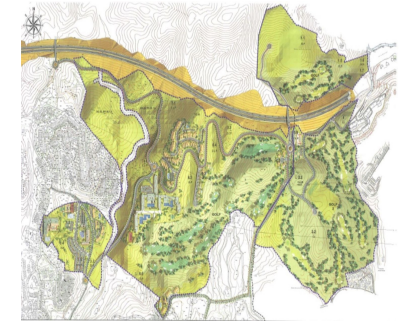
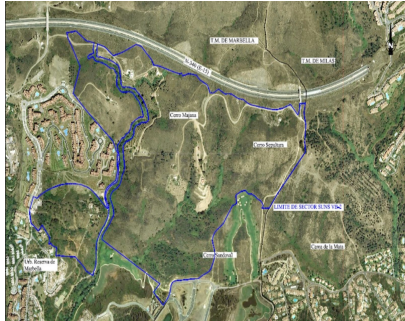


Sales - Plot - Las Chapas  
**2.145.800€**

[www.mibgroup.es](http://www.mibgroup.es)  
 +34 662 58 96 58  
[info@mibgroup.es](mailto:info@mibgroup.es)



Ref.-ID: MIBGR4360702

Las Chapas

Plot



**21458 m2**

This sector has a total area of 710,458 m<sup>2</sup>, of which 21,458 m<sup>2</sup> corresponds to this farm. It represents 3.02% of rights and obligations. The sector has a buildable area of 57,234.29 m<sup>2</sup> for Free Income Housing IN LOW DENSITY, 380 houses in Poblado Mediterráneo and 11 isolated houses. Buildable area of 40,362 m<sup>2</sup> for Hotels. 3,000 m<sup>2</sup> Economic Activities Golf Club and Commercial Area Which makes a total of 100,596.29 m<sup>2</sup> of surface area. Therefore 100,596.29 m<sup>2</sup> x 3.02% = 3,038 m<sup>2</sup> of buildable area, which would correspond to this plot.

**Orientation**

- ✓ East
- ✓ South East
- ✓ South
- ✓ South West
- ✓ West

**Views**

- ✓ Sea
- ✓ Mountain
- ✓ Golf
- ✓ Panoramic

**Category**

- ✓ Resale