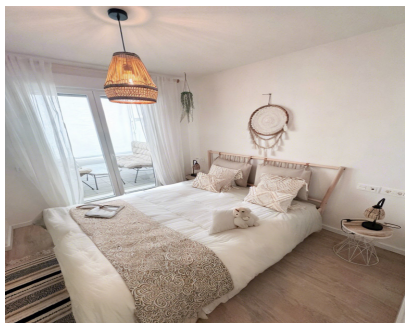


**Sales - Apartment - Marbella**  
**320.000€**

**www.mibgroup.es**  
**+34 662 58 96 58**  
**info@mibgroup.es**



**Ref.-ID: MIBGR4624753**

**Marbella**

**Apartment**

**Community: 528 EUR / year**

**IBI: 630 EUR / year**

**Rubbish: 12 EUR / year**



**2**



**2**



**100 m2**



**125 m2**

Your new home in the heart of Nueva Andalucía, Marbella, nestled in the prestigious Jardines de Guadaiza. This brand new building presents a modern and stylish apartment, offering the epitome of comfort and convenience in this sought-after neighborhood. Step into this contemporary haven boasting 2 bedrooms and 2 bathrooms, designed with a perfect balance of sophistication and functionality. The apartment is an oasis of tranquility, providing a peaceful retreat after a day of exploring the vibrant surroundings. One of the highlights of this residence is the private terrace, where you can savor the Mediterranean climate and soak in panoramic views of the surrounding beauty. Whether it's morning coffee or an evening under the stars, this outdoor space becomes an extension of your living area. Indulge in the leisurely pleasures of the communal pool, a perfect spot to relax and unwind. Immerse yourself in the refreshing waters while enjoying the Spanish sunshine, creating memories with friends and family. For those who prioritize fitness, the communal gym offers a space to stay active and healthy without leaving the comfort of your home. Take advantage of state-of-the-art equipment in a convenient and inviting environment. This prime location places you next to an array of restaurants, golf clubs, and essential amenities, ensuring that every need is met within close proximity. Whether you're a food enthusiast, golf aficionado, or simply seeking daily conveniences, this apartment provides an unparalleled lifestyle.

<b>Condition</b> ✔ Excellent	<b>Pool</b> ✔ Communal	<b>Climate Control</b> ✔ Air Conditioning	<b>Views</b> ✔ Panoramic	<b>Features</b> ✔ Private Terrace ✔ Gym	<b>Furniture</b> ✔ Fully Furnished
<b>Garden</b> ✔ Communal	<b>Security</b> ✔ 24 Hour Security	<b>Parking</b> ✔ Communal	<b>Category</b> ✔ Luxury		