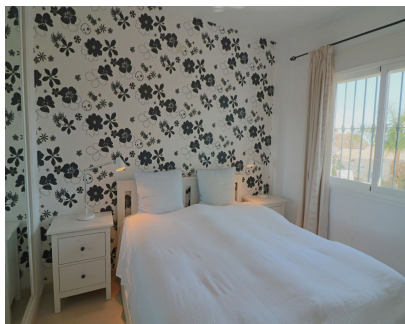


Sales - Apartment - Benalmadena
399.000€

www.mibgroup.es
+34 662 58 96 58
info@mibgroup.es



Ref.-ID: MIBGR4654375

Benalmadena

Apartment

Community: 1,476 EUR / year

IBI: 246 EUR / year

Rubbish: 54 EUR / year



3



2



109 m2

Magnificent 3 bedroom ground floor flat with a spectacular terrace with unobstructed views in a luxury development with extensive gardens and a large communal swimming pool in a very quiet residential area, very close to Benalmadena Town Centre and with easy access to the AP7. It is a spacious flat of more than 100 m2 with 3 bedrooms and 2 complete bathrooms. At the entrance we are welcomed by a large living-dining room with fireplace and direct access to a large covered and closed terrace, which in turn leads to another uncovered terrace and to the private garden. The kitchen is fully equipped and has direct access to the living room. The property is sold with a covered parking space. The urbanization has large communal gardens and a large swimming pool, all within a very quiet residential area of Benalmádena, but just a few metres from the centre of Benalmádena Pueblo and the Higuera Commercial Centre and therefore close to all amenities such as schools, supermarkets, bars, etc. In short, a large ground floor flat with large terraces and a private garden in Benalmadena Pueblo with 3 bedrooms and 2 bathrooms in a very sought after residential area just a few minutes from the centre of Benalmadena and the best beaches of the Costa del Sol, all at a very competitive price.

Setting <ul style="list-style-type: none">✔ Close To Golf✔ Close To Shops✔ Close To Schools	Orientation <ul style="list-style-type: none">✔ South	Condition <ul style="list-style-type: none">✔ Good	Pool <ul style="list-style-type: none">✔ Communal	Views <ul style="list-style-type: none">✔ Sea✔ Garden✔ Pool	Features <ul style="list-style-type: none">✔ Covered Terrace✔ Near Transport✔ Private Terrace✔ Ensuite Bathroom
Furniture <ul style="list-style-type: none">✔ Not Furnished	Kitchen <ul style="list-style-type: none">✔ Fully Fitted	Garden <ul style="list-style-type: none">✔ Communal	Parking <ul style="list-style-type: none">✔ Garage	Category <ul style="list-style-type: none">✔ Resale	