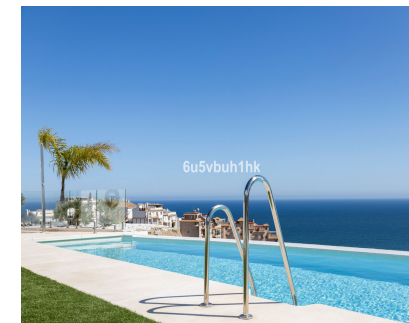
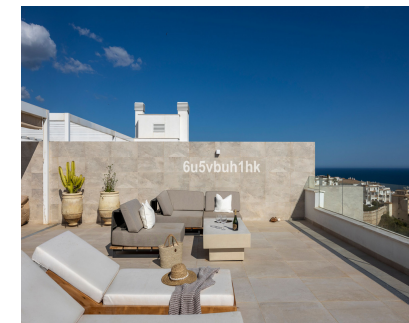
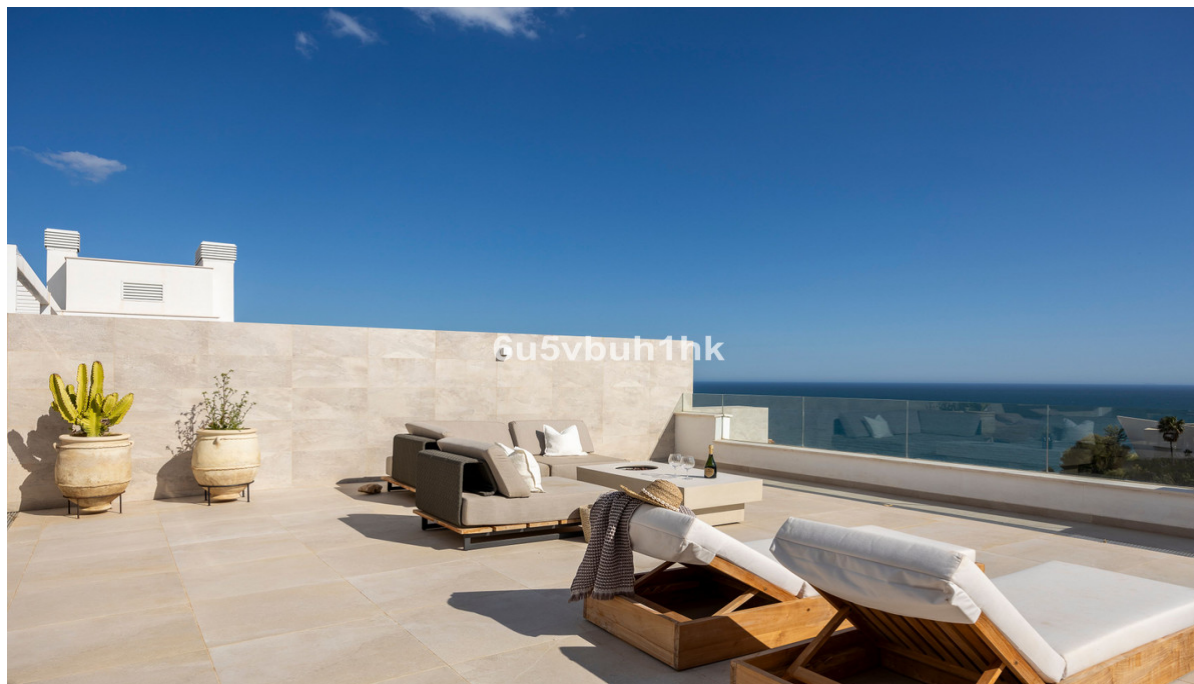
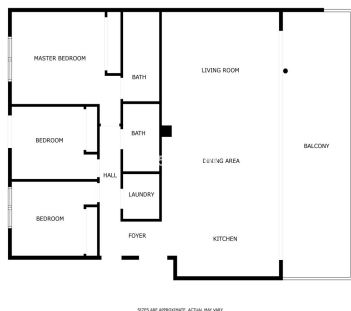


**Sales - Apartment - Benalmadena**  
**1.339.000€**

**www.mibgroup.es**  
**+34 662 58 96 58**  
**info@mibgroup.es**



**Ref.-ID: MIBGR5021731**

**Benalmadena**

**Apartment**

**Community: 4,536 EUR / year**

**IBI: 1,010 EUR / year**

**Rubbish: 53 EUR / year**



**3**



**2**



**130 m2**

When Perfection Truly Exists The One is more than just an address – it’s a promise of peace, space, light, and a life you no longer have to dream about. This unique penthouse home perfectly blends elegance with comfort, top-tier technical quality with soulful bohemian charm. Everything is on one spacious, bright level where every detail has been carefully thought out. Living Spaces 3 bedrooms 2 bathrooms, including an en-suite in the master bedroom Utility/technical room conveniently located next to the entrance Private elevator directly from the garage to your home and your private rooftop terrace. As you enter, you're welcomed by an open view that flows through the kitchen, dining, and living areas – extending seamlessly to the amazing sea view terrace, enhanced with high-quality 9-meter electric sunshades with wind sensors. Mornings begin with birdsong and the first rays of sun, and evenings end gazing at the silhouette of the African coast. The boho-inspired interior complements the clear and practical floor plan, while water-circulated underfloor heating and cooling ensure comfort year-round. The upgraded kitchen features an enlarged island, plenty of workspace, premium appliances, and a wine cooler. Rooftop Oasis Access your private rooftop terrace directly by elevator from inside your home and garage! A perfect retreat to relax, spend time with family, or host unforgettable evenings. 2 manually adjustable sunshades over a pergola with a large dining table 4-5 person jacuzzi and outdoor shower Summer kitchen with grill and fridge Premium outdoor furniture for stylish lounging Video intercom with gate access control Verisure alarm system (transferable) Fiber-optic internet enhanced with a booster (contract transferable) Community offers: 2 parking spaces 2 storage rooms Elevator access directly from garage to home and rooftop Fully equipped gym with sea views Spectacular infinity pool area with breathtaking panoramic views Location Located in the sought-after and tranquil area of La Capellanía, combining privacy, natural surroundings and stunning sea views, yet close to all services: Free regular city shuttle to the beach and Carrefour shopping center from the nearby stop. Only 600 m walking distance to Carvajal Beach About 20 minutes uphill on foot to Carrefour Nearest petrol station with fresh baguettes – just 600 m away Welcome to a home where every moment is an experience!

|   |  |   |   |   |   |
|---|--|---|---|---|---|
| <b>Setting</b> <ul style="list-style-type: none"><li>✓ Beachside</li><li>✓ Close To Shops</li><li>✓ Close To Sea</li><li>✓ Close To Town</li><li>✓ Close To Schools</li></ul>   | <b>Orientation</b> <ul style="list-style-type: none"><li>✓ North</li><li>✓ North East</li><li>✓ East</li><li>✓ South East</li><li>✓ South</li><li>✓ South West</li><li>✓ West</li><li>✓ North West</li></ul> | <b>Condition</b> <ul style="list-style-type: none"><li>✓ Excellent</li></ul>  | <b>Pool</b> <ul style="list-style-type: none"><li>✓ Communal</li><li>✓ Private</li></ul>            | <b>Climate Control</b> <ul style="list-style-type: none"><li>✓ Air Conditioning</li><li>✓ Central Heating</li><li>✓ U/F Heating</li><li>✓ U/F/H Bathrooms</li></ul> | <b>Views</b> <ul style="list-style-type: none"><li>✓ Sea</li><li>✓ Mountain</li><li>✓ Beach</li><li>✓ Country</li><li>✓ Panoramic</li><li>✓ Garden</li><li>✓ Pool</li></ul> |
| <b>Features</b> <ul style="list-style-type: none"><li>✓ Covered Terrace</li><li>✓ Lift</li><li>✓ Fitted Wardrobes</li><li>✓ Near Transport</li><li>✓ Private Terrace</li><li>✓ Solarium</li><li>✓ WiFi</li><li>✓ Gym</li><li>✓ Sauna</li><li>✓ Storage Room</li><li>✓ Utility Room</li><li>✓ Ensuite Bathroom</li><li>✓ Jacuzzi</li><li>✓ Barbeque</li><li>✓ Double Glazing</li><li>✓ Fiber Optic</li></ul> | <b>Furniture</b> <ul style="list-style-type: none"><li>✓ Fully Furnished</li><li>✓ Not Furnished</li><li>✓ Optional</li></ul>  | <b>Kitchen</b> <ul style="list-style-type: none"><li>✓ Fully Fitted</li></ul> | <b>Garden</b> <ul style="list-style-type: none"><li>✓ Communal</li><li>✓ Easy Maintenance</li></ul> | <b>Security</b> <ul style="list-style-type: none"><li>✓ Gated Complex</li><li>✓ Electric Blinds</li><li>✓ Alarm System</li></ul>                                    | <b>Parking</b> <ul style="list-style-type: none"><li>✓ Underground</li><li>✓ Garage</li><li>✓ Street</li><li>✓ More Than One</li><li>✓ Private</li></ul>                    |
| <b>Utilities</b> <ul style="list-style-type: none"><li>✓ Telephone</li></ul>  | <b>Category</b> <ul style="list-style-type: none"><li>✓ Luxury</li><li>✓ Resale</li></ul>  |   |   |   |   |