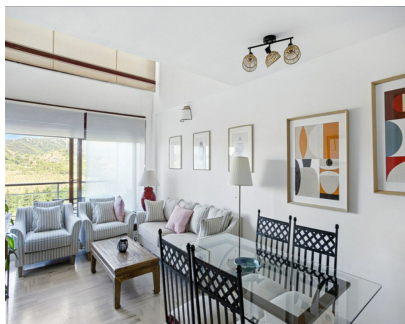


Sales - Apartment - Benahavís
430.000€

www.mibgroup.es
+34 662 58 96 58
info@mibgroup.es



Ref.-ID: MIBGR5081719

Benahavís

Apartment

Community: 4,320 EUR / year



3



2



180 m2

Elegant West-Facing Duplex Penthouse in Parque Botánico, Benahavis, with Touristica Licence. This spacious and beautifully presented west-facing duplex penthouse offers three well-proportioned bedrooms and breathtaking panoramic views across lush tropical gardens and the peaceful surrounding countryside. The bright and welcoming living area features a charming fireplace and opens onto a sun-drenched terrace — the perfect spot to relax and enjoy the afternoon light. The property includes a fully equipped kitchen, built-in wardrobes, window shutters, and hot/cold air conditioning for year-round comfort. Situated within a secure gated community with 24-hour security, this home also comes with a private underground parking space and a storage room. Residents have access to an impressive range of on-site amenities, including beautifully landscaped gardens, several outdoor swimming pools, a heated indoor pool, gym, sauna, and a seasonal bar-restaurant. Just a short drive from the beach and all coastal conveniences, this peaceful location blends natural beauty with modern comfort. With a valid tourist license already in place, the property also offers excellent potential as a rental or holiday investment.

- Setting**
- ✓ Country
 - ✓ Urbanisation

- Features**
- ✓ Covered Terrace
 - ✓ Lift
 - ✓ Fitted Wardrobes
 - ✓ Private Terrace
 - ✓ Gym
 - ✓ Sauna
 - ✓ Storage Room
 - ✓ Ensuite Bathroom
 - ✓ Jacuzzi
 - ✓ Double Glazing

- Utilities**
- ✓ Electricity

- Orientation**
- ✓ West

- Furniture**
- ✓ Optional

- Category**
- ✓ Investment
 - ✓ Resale

- Condition**
- ✓ Good

- Kitchen**
- ✓ Fully Fitted

- Pool**
- ✓ Communal
 - ✓ Heated

- Garden**
- ✓ Communal

- Climate Control**
- ✓ Air Conditioning

- Security**
- ✓ 24 Hour Security

- Views**
- ✓ Mountain
 - ✓ Country
 - ✓ Garden

- Parking**
- ✓ Underground