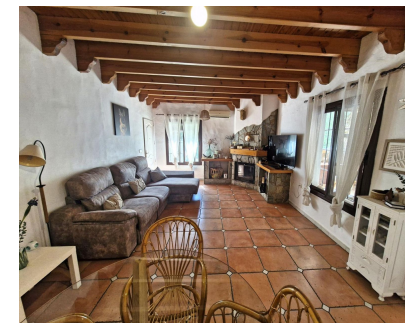


Sales - House - Coín  
**440.000€**

[www.mibgroup.es](http://www.mibgroup.es)  
 +34 662 58 96 58  
[info@mibgroup.es](mailto:info@mibgroup.es)



Ref.-ID: MIBGR5134597

IBI: 479 EUR / year

Coín



4



2



132 m2

House



2012 m2

Charming Riverside Finca in Coín Nestled beside the tranquil Pereila River, this delightful two-level finca offers the perfect blend of rustic charm and modern convenience. Just a 5-minute drive from the amenities of Coín, the property enjoys excellent access and a serene countryside setting. On the hiking trail that connects Coín with the Guadalhorce Green Corridor, following the course of the Pereilas and Guadalhorce rivers. The ground floor welcomes you via a spacious entrance terrace with outside kitchen and BBQ, ideal for outdoor dining. Inside, you'll find a cosy living room with a fireplace, a fully fitted kitchen, a comfortable bedroom, and a family bathroom. Upstairs, the master bedroom is accompanied by two single bedrooms, and a large roof terrace with views of the surrounding landscape. Set on a manageable 2,000m<sup>2</sup> plot with an electric entrance gate, the property benefits from its own registered well, irrigation water, and town water supply. Additional features include an outside storage room, car port, and ample parking for multiple vehicles. For those seeking more space, a neighbouring flat plot of approximately 7,000m<sup>2</sup> is also available for purchase, offering further possibilities for horses or privacy. With its riverside location, authentic Andalusian character, and proximity to town, this registered finca offers an exceptional opportunity for both full-time living and a peaceful holiday retreat.

**Setting**

- ✓ Country

**Climate Control**

- ✓ Air Conditioning
- ✓ Fireplace

**Views**

- ✓ Country
- ✓ Garden

**Features**

- ✓ Covered Terrace
- ✓ Private Terrace
- ✓ Storage Room
- ✓ Barbeque

**Kitchen**

- ✓ Fully Fitted

**Garden**

- ✓ Private

**Parking**

- ✓ Covered
- ✓ Private

**Utilities**

- ✓ Electricity
- ✓ Drinkable Water