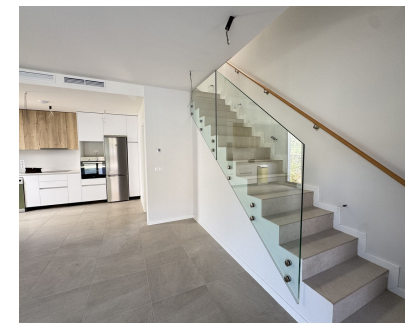


Sales - House - Riviera del Sol  
575.000€

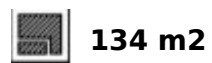
[www.mibgroup.es](http://www.mibgroup.es)  
+34 662 58 96 58  
[info@mibgroup.es](mailto:info@mibgroup.es)



Ref.-ID: MIBGR5147359

Riviera del Sol

House



This stunning, newly completed modern contemporary 3 bedroom semi-detached villa in urbanisation Alya offers stylish contemporary living in a sought-after residential area. Built to the highest standards with a sleek architectural design, this property provides the perfect blend of comfort, practicality, and elegance. Featuring 3 spacious bedrooms with built-in wardrobes, The master bedroom features an ensuite, a large bedroom window. The bedroom windows come with shutters for both privacy and shade. The open-plan living space connects seamlessly to the fully fitted kitchen, which comes complete with modern appliances and high-quality cabinetry. A striking staircase with glass balustrade enhances the modern design and creates a bright, airy atmosphere. Externally, the villa offers a private garden which is ready to be landscaped to the buyer's taste, providing the opportunity to create a personalized outdoor retreat (examples in the photos of what they can do). The development also includes access to a community swimming pool, gym and co working area. Location Highlights: Just 1.2 km from the beach, with excellent road access to both Marbella and Málaga, and surrounded by several prestigious golf clubs, this property combines modern comfort with an unbeatable lifestyle on the Costa del Sol. With 134 square metres of built space, this brand-new semi detached villa is the ideal choice for those seeking a stylish, low-maintenance modern home with excellent potential.

- |                                                                                                                                                       |                                                                                                      |                                                                                                         |                                                                          |                                                                                                                     |                                                                                |
|-------------------------------------------------------------------------------------------------------------------------------------------------------|------------------------------------------------------------------------------------------------------|---------------------------------------------------------------------------------------------------------|--------------------------------------------------------------------------|---------------------------------------------------------------------------------------------------------------------|--------------------------------------------------------------------------------|
| <b>Setting</b> <ul style="list-style-type: none"><li>✓ Urbanisation</li></ul>                                                                         | <b>Orientation</b> <ul style="list-style-type: none"><li>✓ South East</li><li>✓ South West</li></ul> | <b>Condition</b> <ul style="list-style-type: none"><li>✓ Excellent</li><li>✓ New Construction</li></ul> | <b>Pool</b> <ul style="list-style-type: none"><li>✓ Communal</li></ul>   | <b>Climate Control</b> <ul style="list-style-type: none"><li>✓ Air Conditioning</li><li>✓ Central Heating</li></ul> | <b>Views</b> <ul style="list-style-type: none"><li>✓ Mountain</li></ul>        |
| <b>Features</b> <ul style="list-style-type: none"><li>✓ Covered Terrace</li><li>✓ Fitted Wardrobes</li><li>✓ Gym</li><li>✓ Ensuite Bathroom</li></ul> | <b>Kitchen</b> <ul style="list-style-type: none"><li>✓ Fully Fitted</li></ul>                        | <b>Garden</b> <ul style="list-style-type: none"><li>✓ Communal</li><li>✓ Private</li></ul>              | <b>Parking</b> <ul style="list-style-type: none"><li>✓ Private</li></ul> | <b>Utilities</b> <ul style="list-style-type: none"><li>✓ Electricity</li></ul>                                      | <b>Category</b> <ul style="list-style-type: none"><li>✓ Contemporary</li></ul> |