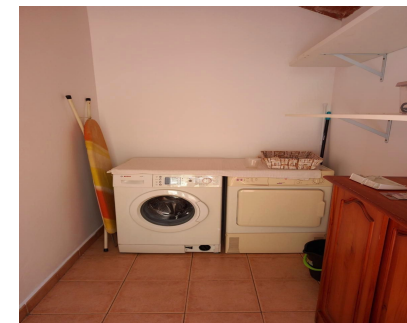
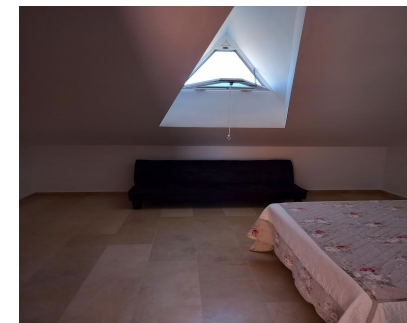


**Sales - House - Estepona**  
**725.000€**

**www.mibgroup.es**  
**+34 662 58 96 58**  
**info@mibgroup.es**



**Ref.-ID: MIBGR5199937**

**Estepona**

**House**

**Community: 780 EUR / year**



**3**



**3**



**145 m2**

Discover this magnificent three-storey townhouse in the second line of the beach, only 50 metres from the Mediterranean Sea and right next to the scenic Senda Litoral coastal path – perfect for leisurely strolls or invigorating seaside workouts. Boasting an enviable south-facing orientation, generous terraces, and 145 m² of impeccably designed living space, this property is ideal as a permanent residence or a luxurious holiday retreat. Ground Floor: Spacious open-plan living-dining room with direct access to a charming private patio. Fully equipped independent kitchen and a convenient guest cloakroom. First Floor: Master bedroom suite with en-suite bathroom and private terrace, plus a second double bedroom served by a full family bathroom. Second Floor: Versatile loft space, ideal as a third bedroom, home office, or entertainment room, complete with a utility laundry area and a delightful rooftop terrace. Additional Features: 3 bedrooms | 3 bathrooms Built-in wardrobes throughout Air conditioning Included garage parking space South orientation for all-day sunshine Terraces and balcony Communal swimming pool in a secure, peaceful urbanisation Nestled in an unbeatable, tranquil location with excellent connectivity – pharmacies, supermarkets, and shops just steps away, and Estepona's vibrant town centre only a 10-minute walk. Contact us today to arrange your exclusive viewing!

<b>Setting</b> <div><div></div>Beachfront</div> <div><div></div>Town</div> <div><div></div>Commercial Area</div> <div><div></div>Beachside</div> <div><div></div>Close To Port</div> <div><div></div>Close To Shops</div> <div><div></div>Close To Sea</div> <div><div></div>Close To Town</div> <div><div></div>Close To Schools</div> <div><div></div>Close To Marina</div> <div><div></div>Urbanisation</div>	<b>Orientation</b> <div><div></div>South</div>	<b>Condition</b> <div><div></div>Excellent</div>	<b>Pool</b> <div><div></div>Communal</div>	<b>Climate Control</b> <div><div></div>Air Conditioning</div>	<b>Views</b> <div><div></div>Garden</div> <div><div></div>Courtyard</div> <div><div></div>Street</div>
<b>Features</b> <div><div></div>Covered Terrace</div> <div><div></div>Fitted Wardrobes</div> <div><div></div>Near Transport</div> <div><div></div>Private Terrace</div> <div><div></div>Storage Room</div> <div><div></div>Utility Room</div> <div><div></div>Ensuite Bathroom</div> <div><div></div>Marble Flooring</div> <div><div></div>Double Glazing</div> <div><div></div>Fiber Optic</div>	<b>Furniture</b> <div><div></div>Fully Furnished</div>	<b>Kitchen</b> <div><div></div>Fully Fitted</div>	<b>Garden</b> <div><div></div>Communal</div>	<b>Security</b> <div><div></div>Gated Complex</div> <div><div></div>Alarm System</div>	<b>Parking</b> <div><div></div>Covered</div> <div><div></div>Private</div>