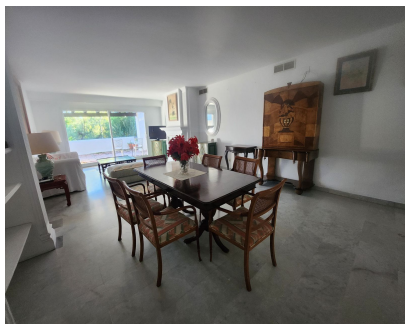


Sales - Apartment - Atalaya
900.000€

www.mibgroup.es
+34 662 58 96 58
info@mibgroup.es



Ref.-ID: MIBGR5210194

Atalaya

Apartment

Community: 3,720 EUR / year



3



3.5



220 m2

Large duplex penthouse apartment located in one of the most sought-after developments in Guadalmina Baja, Alhambra del Golf 1, offering a unique setting surrounded by lush tropical gardens and paddle tennis courts. The community has an exceptional pool complex with its own restaurant. The apartment consists of 3 bedrooms, all with en-suite bathrooms (2 on the ground floor and one upstairs), two of which have access to a terrace, a large living-dining room with a fireplace and access to a terrace, a separate kitchen, and a guest bathroom. This apartment has a private elevator from the ground floor to the first floor, and the price also includes an underground parking space and storage room. This house next to Casasola beach, Guadalmina baja, is located right on the cusp between San Pedro and Guadalmina. The well-established community is renowned for its luxurious and extensive gardens and offers the perfect community life for a family with children who can benefit from an open and safe space. A huge duplex penthouse with many square meters, big terraces, south orientation,, easy access to transportation, shops, schools, sports facilities... and of course the beach! Better to see it, it won't disappoint.

Setting
✓ Urbanisation

Orientation
✓ South

Pool
✓ Communal

Climate Control
✓ Air Conditioning

Views
✓ Garden

Features
✓ Lift
✓ Fitted Wardrobes
✓ Near Transport
✓ Private Terrace
✓ Paddle Tennis
✓ Storage Room
✓ Marble Flooring

Furniture
✓ Part Furnished

Kitchen
✓ Fully Fitted

Garden
✓ Communal

Security
✓ Gated Complex
✓ Entry Phone

Parking
✓ Underground
✓ Garage

Utilities
✓ Electricity
✓ Drinkable Water

Category
✓ Holiday Homes
✓ Luxury