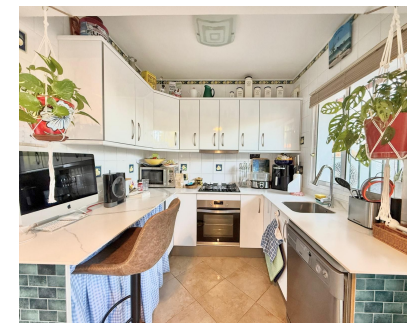
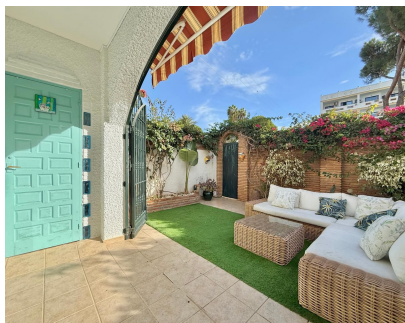


Sales - House - Calahonda
410.000€

www.mibgroup.es
+34 662 58 96 58
info@mibgroup.es



Ref.-ID: MIBGR5213668

Calahonda

House



2



2



99 m2

Semi-detached house in Calahonda, steps from the beach Just a few meters from the sea, in one of the most sought-after areas of the south coast, you'll find this charming two-story semi-detached house that combines comfort, natural light, and a peaceful seaside setting. On the ground floor, there's a spacious and bright living-dining room with direct access to a private patio of approximately 35 m² and a sunny terrace, perfect for enjoying breakfast al fresco or the gentle Mediterranean breezes. From here, you can directly access the communal garden and swimming pool, surrounded by beautifully maintained green spaces. This floor also includes a fully equipped kitchen, a full bathroom, and a practical storage room. Upstairs, you'll find two bedrooms, both with plenty of natural light and built-in wardrobes, as well as a full bathroom and a second southeast-facing terrace with lovely views of the garden and pool. This property is part of a very quiet community of just 16 homes, with very low community fees. The complex offers a private and welcoming atmosphere, with landscaped communal areas and a swimming pool, perfect for families or as a second home by the sea. ☑ A unique opportunity to enjoy coastal living, just steps from the beach and close to all amenities.

Setting <div><div>✓</div>Close To Golf</div> <div><div>✓</div>Close To Shops</div> <div><div>✓</div>Close To Sea</div>	Orientation <div><div>✓</div>North</div> <div><div>✓</div>North East</div> <div><div>✓</div>East</div> <div><div>✓</div>South East</div> <div><div>✓</div>South</div> <div><div>✓</div>South West</div> <div><div>✓</div>West</div>	Condition <div><div>✓</div>Excellent</div>	Pool <div><div>✓</div>Communal</div>	Climate Control <div><div>✓</div>Air Conditioning</div>	Features <div><div>✓</div>Covered Terrace</div> <div><div>✓</div>Fitted Wardrobes</div> <div><div>✓</div>Private Terrace</div>
Furniture <div><div>✓</div>Part Furnished</div>	Kitchen <div><div>✓</div>Fully Fitted</div>	Garden <div><div>✓</div>Communal</div>	Parking <div><div>✓</div>Communal</div>		