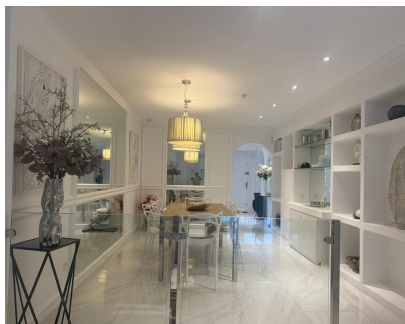
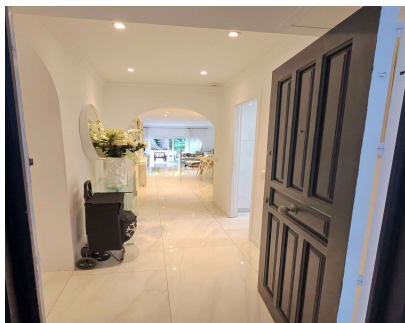


**Sales - Apartment - Puerto Banús**  
**720.000€**

**www.mibgroup.es**  
**+34 662 58 96 58**  
**info@mibgroup.es**



**Ref.-ID: MIBGR5241850**

**Puerto Banús**

**Apartment**



**2**



**2**



**135 m2**

Set within the exclusive Jardines de las Fuente residential enclave in the heart of Puerto Banús, this apartment embodies contemporary elegance designed for those seeking a refined home in one of Europe’s most coveted coastal destinations. With 135 square metres of thoughtfully arranged space, the residence offers generous, harmonious interiors filled with natural light and a sense of calm. The property comprises two spacious bedrooms created for absolute comfort, along with two meticulously finished bathrooms that combine functionality with understated sophistication. The living and dining area, defined by clean and balanced lines, opens seamlessly to the exterior, enhancing the overall feeling of openness. The recently refurbished kitchen blends modern design with timeless appeal, perfectly complementing the character of the home. Two private terraces extend the interior living experience outdoors, offering serene areas to enjoy the Mediterranean climate throughout the year. Jardines de la Fuente is a peaceful and impeccably maintained enclave, just a short walk from the Puerto Banús marina, its luxury boutiques, fine dining options, and soft-sand beaches. The blend of privacy, prime location and refined style makes this property an exceptional choice, whether as a primary residence or as a prestigious investment. The property is offered at 720,000 €, a price fully aligned with the exclusivity of the surroundings and the quality of the residence.

<b>Setting</b> <ul style="list-style-type: none"><li>✔ Beachside</li><li>✔ Close To Shops</li><li>✔ Close To Sea</li><li>✔ Urbanisation</li></ul>	<b>Orientation</b> <ul style="list-style-type: none"><li>✔ South West</li></ul>	<b>Condition</b> <ul style="list-style-type: none"><li>✔ Recently Renovated</li></ul>	<b>Pool</b> <ul style="list-style-type: none"><li>✔ Communal</li></ul>	<b>Climate Control</b> <ul style="list-style-type: none"><li>✔ Air Conditioning</li></ul>	<b>Views</b> <ul style="list-style-type: none"><li>✔ Garden</li></ul>
<b>Features</b> <ul style="list-style-type: none"><li>✔ Covered Terrace</li><li>✔ Private Terrace</li><li>✔ Double Glazing</li></ul>	<b>Kitchen</b> <ul style="list-style-type: none"><li>✔ Fully Fitted</li></ul>	<b>Garden</b> <ul style="list-style-type: none"><li>✔ Communal</li></ul>	<b>Security</b> <ul style="list-style-type: none"><li>✔ Gated Complex</li></ul>	<b>Parking</b> <ul style="list-style-type: none"><li>✔ Private</li></ul>	<b>Utilities</b> <ul style="list-style-type: none"><li>✔ Electricity</li><li>✔ Drinkable Water</li></ul>