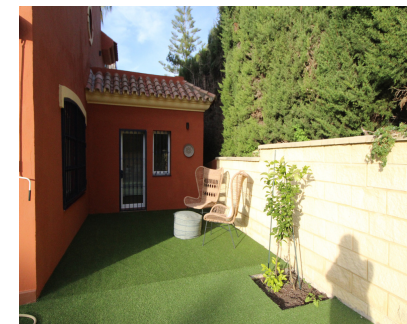


Sales - House - Atalaya
690.000€

www.mibgroup.es
+34 662 58 96 58
info@mibgroup.es



Ref.-ID: MIBGR5251573

Atalaya

House

Community: 1,380 EUR / year IBI: 680 EUR / year

Rubbish: 185 EUR / year



4



3



285 m2



250 m2

Large house ready to go in to live; From the beautiful front garden and through a stone staircase you access the entrance of the house open to a large living room with fireplace that has plenty of light all day as it is south orientation; on this floor there is also a separate kitchen, with small dining room, that gives the access garden, a guest toilet and a small extra room perfect for office, or for room to play, from which you pass to the private garage covered with The house is the Lomas de Monte Biarritz one of the most beautiful and well-kept urbanizations in the area; On the first floor there are 3 bedrooms, the master with en-suite bathroom, closet area and access to two terraces one of them huge solarium type; , the other two rooms also have fitted wardrobes and share another bathroom; the house has a more attic floor where a small room is located with a large terrace that enjoys wide views. The house has recently been completely renovated by architects; so this list to enter to live and by its orientation, has a lot of light all day; the community is very well maintained and managed. It has large and beautiful gardens and 2 swimming pools, one of adults and another of children; It is a perfect house for families with children, since there is a lot of atmosphere; and it is perfect for living all year round; since it is next to all services: The Guadalmina Shopping Centre also the Atalaya and San José schools in Guadalmina are next to it; Call us and we teach you!!

Setting <ul style="list-style-type: none">✔ Close To Golf✔ Close To Port✔ Close To Shops✔ Close To Sea✔ Close To Town✔ Close To Schools	Orientation <ul style="list-style-type: none">✔ South	Condition <ul style="list-style-type: none">✔ Excellent✔ Good✔ Recently Renovated✔ New Construction	Pool <ul style="list-style-type: none">✔ Communal	Climate Control <ul style="list-style-type: none">✔ Fireplace	Views <ul style="list-style-type: none">✔ Country✔ Panoramic✔ Garden✔ Pool
Features <ul style="list-style-type: none">✔ Covered Terrace✔ Fitted Wardrobes✔ Near Transport✔ Private Terrace✔ Solarium✔ Games Room✔ Utility Room✔ Wood Flooring✔ Marble Flooring✔ Double Glazing	Furniture <ul style="list-style-type: none">✔ Not Furnished	Kitchen <ul style="list-style-type: none">✔ Partially Fitted	Garden <ul style="list-style-type: none">✔ Private	Security <ul style="list-style-type: none">✔ Gated Complex✔ Electric Blinds	Parking <ul style="list-style-type: none">✔ Private