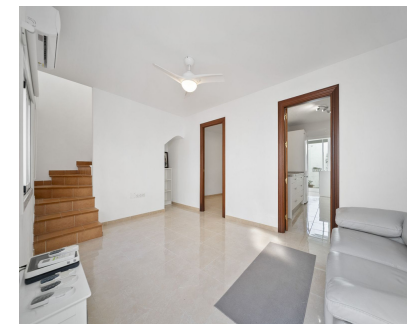


**Sales - House - Benalmadena Pueblo**  
**375.000€**

**www.mibgroup.es**  
**+34 662 58 96 58**  
**info@mibgroup.es**



**Ref.-ID: MIBGR5284000**

**Benalmadena Pueblo**

**House**



**3**



**1**



**110 m2**

Charming Renovated Village Home in the Heart of Benalmádena Pueblo Step into timeless Andalusian charm blended with modern comfort in this beautifully refurbished townhouse, perfectly situated in the centre of Benalmádena Pueblo. Set on a tranquil, tree-lined residential street among traditional whitewashed homes, this bright and spacious residence offers panoramic views of the mountains and village, making it a peaceful retreat with all amenities just a short stroll away. Restaurants, shops, and daily conveniences are right around the corner, with the International Vithas Xanit Hospital and the beaches of Torremuelle only 5 minutes away by car. Conveniently connected to: Arroyo de la Miel – 5 min Fuengirola – 10 min Málaga International Airport (AGP) – 15 min Málaga City Centre – 20 min Marbella – 25 min Completely remodelled in 2021, the home combines the character of traditional Andalusian architecture with contemporary upgrades. All electrical and plumbing systems have been fully overhauled, offering a worry-free living experience. Layout & Features: 3 bedrooms | 1 stylish bathroom 115 m² total living area on 2 levels 60 m² private garden with mountain views – ideal for dining, relaxing, or entertaining 18 m² terrace with stunning outlooks over the village Fully modernised kitchen with premium appliances and granite countertops Large open-plan living area filled with natural light Elegant Juliet balconies with views and fresh air Upstairs multi-use lounge perfect for a home office or second living area Updated bathroom with quality ceramic finishes and walk-in shower Extras include new roofing, air conditioning, heating, and a garden-level dining area perfect for gatherings. This home is ideal for a young family, a holiday retreat, or a rental investment in one of the Costa del Sol’s most picturesque villages. Property Details: Built area: 110.6 m² Plot: 175 m² Renovated: 2021 Orientation: North & South Heating: Individual electric Accessibility: Interior adapted for reduced mobility Storage room: Yes Garden: Yes

<b>Setting</b> <div><div>✓ Town</div><div>✓ Village</div><div>✓ Mountain Pueblo</div><div>✓ Close To Golf</div><div>✓ Close To Shops</div><div>✓ Close To Town</div><div>✓ Close To Schools</div></div>	<b>Orientation</b> <div><div>✓ South</div></div>	<b>Condition</b> <div><div>✓ Excellent</div></div>	<b>Climate Control</b> <div><div>✓ Air Conditioning</div></div>	<b>Views</b> <div><div>✓ Mountain</div></div>	<b>Features</b> <div><div>✓ Fitted Wardrobes</div></div>
<b>Furniture</b> <div><div>✓ Part Furnished</div></div>	<b>Kitchen</b> <div><div>✓ Fully Fitted</div></div>	<b>Garden</b> <div><div>✓ Private</div></div>	<b>Parking</b> <div><div>✓ Street</div></div>	<b>Utilities</b> <div><div>✓ Electricity</div><div>✓ Drinkable Water</div></div>	<b>Category</b> <div><div>✓ Resale</div></div>