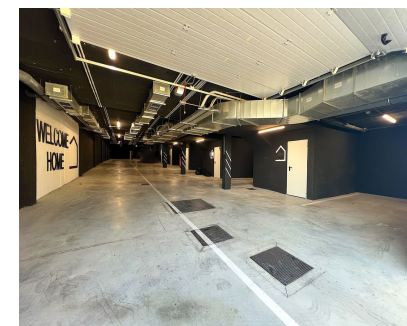
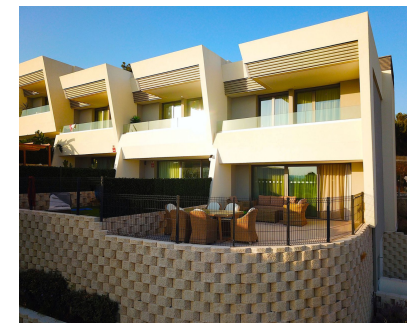


Sales - House - El Faro
1.095.000€

www.mibgroup.es
+34 662 58 96 58
info@mibgroup.es



Ref.-ID: MIBGR5291770

El Faro

House

Community: 3,804 EUR / year IBI: 968 EUR / year

Rubbish: 160 EUR / year



3



3



195 m2



50 m2

Nestled in a contemporary residential development, surrounded by pine forests and adjacent to a prestigious golf course, this corner townhouse captivates with its sophisticated architecture, comfort, and privileged lifestyle. From the moment you step inside, a majestic entrance hall with high ceilings, a designer chandelier, and a glass staircase hints at the property's unique character. The heart of the home is a bright, open-plan space where the designer kitchen, featuring white cabinetry, onyx marble accents, a central island, and Bosch appliances, flows seamlessly into an elegant living room dominated by a full-wall gas fireplace. From here, you can access a spacious south-facing terrace, perfect for watching the sunsets and enjoying the sun throughout the day. * **South-facing terrace** with unobstructed views and year-round sunshine * **Designer kitchen** with premium finishes and Bosch appliances Upstairs, three bedrooms in neutral tones with built-in wardrobes offer direct access to a private terrace with sea views. The minimalist-inspired bathrooms combine natural wood with walk-in showers, creating a serene and contemporary atmosphere. An elegant glass staircase connects to the lower level, where the laundry room, storage room, and private garage are located. The resort-style community offers a gym, swimming pool, tennis courts, putting green, and concierge service. * **Private Garage** * **Access to complete resort-style community facilities** Just minutes from Blue Flag beaches, exclusive restaurants, and prestigious golf courses in La Cala, this property represents the perfect fusion of design, comfort, and a prime location. **Request your private viewing today and discover the home you've always dreamed of.**

Setting <div><div></div>Close To Golf</div> <div><div></div>Close To Sea</div> <div><div></div>Urbanisation</div>	Orientation <div><div></div>South West</div>	Condition <div><div></div>Excellent</div>	Pool <div><div></div>Communal</div>	Climate Control <div><div></div>Air Conditioning</div>	Views <div><div></div>Sea</div>
Features <div><div></div>Covered Terrace</div> <div><div></div>Fitted Wardrobes</div> <div><div></div>Private Terrace</div> <div><div></div>Gym</div> <div><div></div>Tennis Court</div> <div><div></div>Utility Room</div> <div><div></div>Ensuite Bathroom</div> <div><div></div>Double Glazing</div>	Furniture <div><div></div>Fully Furnished</div>	Kitchen <div><div></div>Fully Fitted</div>	Garden <div><div></div>Communal</div>	Security <div><div></div>Gated Complex</div>	Parking <div><div></div>Underground</div>
Utilities <div><div></div>Electricity</div>	Category <div><div></div>Luxury</div>				