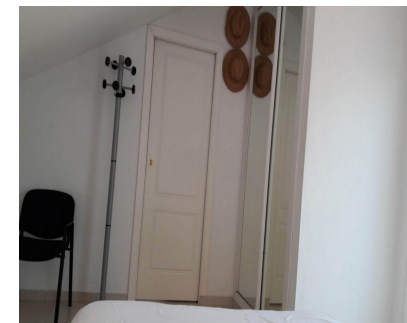


**Sales - Apartment - Benalmadena**  
**512.400€**

**www.mibgroup.es**  
**+34 662 58 96 58**  
**info@mibgroup.es**



**Ref.-ID: MIBGR5291992**

**Benalmadena**

**Apartment**



**4**



**2**



**167 m2**

Located in one of the most strategic and sought-after areas of Benalmádena Costa, Málaga, this exceptional four-bedroom duplex penthouse offers an unparalleled combination of luxury, a prime location, and attractive investment potential. Unbeatable Location - Málaga Airport is just 15 minutes away. - The property boasts exceptional connectivity, with easy access to Málaga city, Marbella, Puerto Banús, Gibraltar, and quick ferry access to Morocco. - All essential services, including supermarkets, hospitals, international schools, and public transport, are within easy walking distance. - Just 5 minutes from the best beaches on the Costa del Sol. A Home Designed for Comfort and Privacy - Spacious terraces surround the property, offering breathtaking panoramic views of the sea, the mountains, and the exclusive Torrequebrada golf course, considered one of the best in Europe. - The property is characterized by its brightness and welcoming spaces, with a smart layout and high-quality finishes. - Absolute privacy is guaranteed in an exclusive residential setting. Unique Investment Opportunity - The property offers a guaranteed return on investment, making it an ideal option for holiday rentals, given the high demand due to its proximity to beaches, golf courses, and leisure activities. - It is perfect for families seeking security, premium services, and an exceptional quality of life.

<b>Setting</b> <div><div></div> Close To Golf</div> <div><div></div> Close To Sea</div> <div><div></div> Close To Schools</div> <div><div></div> Urbanisation</div>	<b>Orientation</b> <div><div></div> South</div>	<b>Condition</b> <div><div></div> Excellent</div>	<b>Pool</b> <div><div></div> Communal</div>	<b>Climate Control</b> <div><div></div> Air Conditioning</div>	<b>Views</b> <div><div></div> Sea</div> <div><div></div> Mountain</div>
<b>Features</b> <div><div></div> Lift</div> <div><div></div> Fitted Wardrobes</div> <div><div></div> Private Terrace</div> <div><div></div> Storage Room</div> <div><div></div> Marble Flooring</div> <div><div></div> Double Glazing</div>	<b>Kitchen</b> <div><div></div> Fully Fitted</div>	<b>Garden</b> <div><div></div> Communal</div>	<b>Parking</b> <div><div></div> Underground</div>	<b>Utilities</b> <div><div></div> Electricity</div> <div><div></div> Drinkable Water</div>	