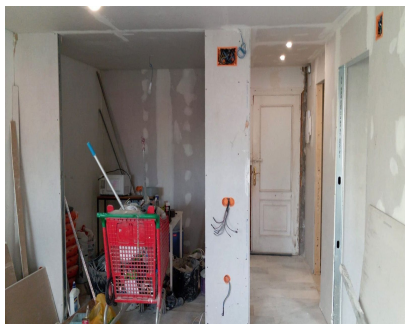
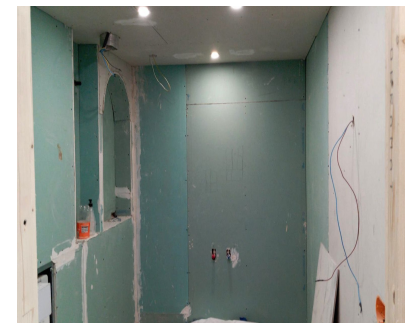


**Sales - Apartment - Puerto Banús**  
**520.000€**

**www.mibgroup.es**  
**+34 662 58 96 58**  
**info@mibgroup.es**



**Ref.-ID: MIBGR5296324**

**Puerto Banús**

**Apartment**



**2**



**1**



**79 m2**

Prime Apartment in the Heart of Puerto Banús, Marbella – Frontline Beach Location with Endless Potential! Seize this exceptional opportunity to own a 79 m² apartment in the glamorous epicentre of Puerto Banús, Marbella's iconic luxury marina on the Costa del Sol – renowned for its opulent yachts, supercars, and celebrity sightings. Steps from the golden sands of Playa de Levante and Playa del Duque, this frontline beach property immerses you in a vibrant lifestyle surrounded by high-end designer boutiques (Louis Vuitton, Gucci, Dolce & Gabbana), upscale shopping centres like Marina Banus and El Corte Inglés, Michelin-starred restaurants, trendy beach clubs, and pulsating nightlife. Perfectly positioned along the famous Golden Mile, it's just a short stroll to gourmet dining, exclusive lounges, and the marina's jet-set atmosphere, with easy access to Marbella's Old Town, world-class golf courses, and attractions like the Fly Blue Catamaran rides. Currently undergoing reforms, this second-hand gem on the second floor (with lift) offers two bedrooms, one bathroom, a kitchen, living room, and a charming small balcony overlooking the bustling main street of Banús – ideal for people-watching in this affluent hotspot. North-facing for cooler, comfortable living, it presents a blank canvas to finish to your personal taste, blending modern luxury with the area's Andalusian charm. Priced at €520,000 – a rare chance to invest in Puerto Banús' high-demand market, whether as a holiday retreat, permanent residence, or lucrative rental property.

<b>Setting</b> <div><div></div>Beachfront</div> <div><div></div>Town</div> <div><div></div>Commercial Area</div> <div><div></div>Beachside</div> <div><div></div>Port</div> <div><div></div>Close To Port</div> <div><div></div>Close To Shops</div> <div><div></div>Close To Sea</div> <div><div></div>Close To Town</div> <div><div></div>Close To Schools</div> <div><div></div>Marina</div> <div><div></div>Close To Marina</div> <div><div></div>Front Line Beach Complex</div>	<b>Orientation</b> <div><div></div>North</div>	<b>Condition</b> <div><div></div>Renovation Required</div>	<b>Climate Control</b> <div><div></div>Pre Installed A/C</div>	<b>Views</b> <div><div></div>Garden</div> <div><div></div>Courtyard</div> <div><div></div>Urban</div> <div><div></div>Street</div>	<b>Features</b> <div><div></div>Lift</div> <div><div></div>Near Transport</div> <div><div></div>Access for people with reduced mobility</div> <div><div></div>Marble Flooring</div> <div><div></div>Double Glazing</div> <div><div></div>Near Church</div>
<b>Furniture</b> <div><div></div>Not Furnished</div>	<b>Kitchen</b> <div><div></div>Not Fitted</div>	<b>Parking</b> <div><div></div>Street</div>	<b>Category</b> <div><div></div>Beachfront</div>		