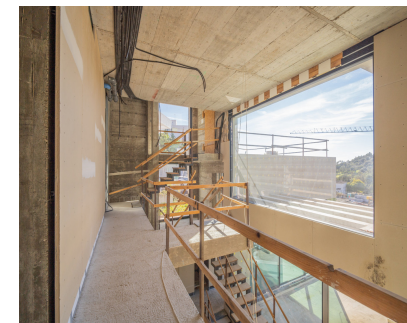
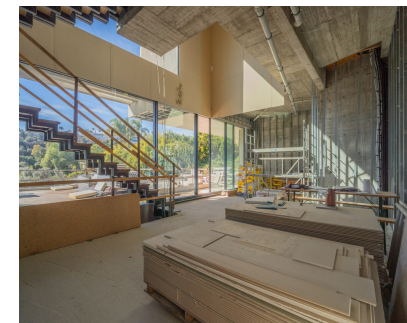


Sales - House - Benahavís
2.940.000€

www.mibgroup.es
+34 662 58 96 58
info@mibgroup.es



Ref.-ID: MIBGR5305513

Benahavís

House



5



5



414 m2



1350 m2

Exceptional opportunity to acquire a new-build luxury villa project already under construction, located on an elevated south-west facing plot in the prestigious residential area of La Alquería, Benahavís. The 1,350 m² plot enjoys a privileged raised position, offering open sea and golf views, excellent sunlight throughout the day and long-term value in one of the most sought-after villa zones on the Costa del Sol. The project comes with an approved building license for a contemporary 5-bedroom, 5-bathroom villa, distributed over three levels, designed with clean architectural lines and a strong focus on precision and quality: - 414 m² interior built area - 356.98 m² terraces - 81 m² private swimming pool - 200 m² panoramic rooftop terrace Construction is already approximately 65% completed, executed with exceptional accuracy and craftsmanship. The concrete structure has been built extremely linear and precise, reflecting high construction standards from the very foundation. The villa features Sky-Frame floor-to-ceiling sliding doors, ensuring seamless indoor-outdoor living, maximum natural light and uninterrupted views. Located where Marbella, Estepona and Benahavís meet, La Alquería is one of the fastest-developing luxury residential areas, surrounded by golf courses, nature and exclusive villas. Just minutes from Puerto Banús, international schools, beaches and amenities, this property represents a rare turnkey-in-progress opportunity, ideal both as a dream home and a high-end investment. License. Construction in progress. Premium quality. Prime location. A truly outstanding opportunity in one of Marbella’s most promising luxury areas.

Setting <div><div>✓</div> Close To Golf</div> <div><div>✓</div> Close To Shops</div> <div><div>✓</div> Close To Town</div>	Orientation <div><div>✓</div> South West</div>	Condition <div><div>✓</div> Excellent</div>	Pool <div><div>✓</div> Private</div>	Views <div><div>✓</div> Sea</div> <div><div>✓</div> Golf</div> <div><div>✓</div> Panoramic</div> <div><div>✓</div> Pool</div>	Features <div><div>✓</div> Lift</div> <div><div>✓</div> Near Transport</div> <div><div>✓</div> Solarium</div>
Garden <div><div>✓</div> Private</div>	Parking <div><div>✓</div> Covered</div>	Category <div><div>✓</div> Golf</div> <div><div>✓</div> Investment</div> <div><div>✓</div> Luxury</div>			