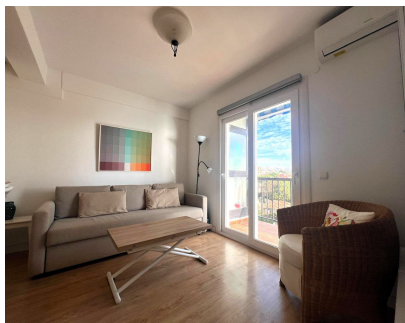


Sales - Apartment - Calahonda  
299.000€

[www.mibgroup.es](http://www.mibgroup.es)  
+34 662 58 96 58  
[info@mibgroup.es](mailto:info@mibgroup.es)



Ref.-ID: MIBGR5308684

Calahonda

Apartment



1



1



39 m2

Discover a true beachfront gem in Calahonda. This fully renovated corner apartment, located on the front line of the beach, stands out for an exceptional and rarely found feature: a large wraparound terrace that surrounds almost the entire property, creating a unique sense of space, light, and outdoor living with the Mediterranean as its constant backdrop. From the very first moment, the apartment conveys a feeling of openness and wellbeing. The bright and welcoming living room opens directly onto the terrace, allowing you to enjoy open sea views and the gentle sea breeze throughout the day. The bedroom, with built-in wardrobe, also benefits from excellent natural light thanks to the corner position of the property, which ensures cross ventilation and brightness in all rooms. The renovation has been carried out in a modern, practical and elegant style, designed to provide immediate comfort with no further investment required. The property is ready to move into and enjoy from day one. The community offers a pleasant communal garden and a swimming pool located right by the sea, a true luxury that allows you to relax while enjoying the Mediterranean just steps away. The location is unbeatable: right next to the coastal promenade, surrounded by beach bars, restaurants and pleasant walking areas, and just a five-minute walk from supermarkets, a bus stop and with quick access to the motorway. All this in a quiet and secure area, with the privilege of living literally by the sea. Properties with these features — wraparound terrace, seaside pool, communal garden, frontline beach location and impeccable condition — are extremely rare and attract strong interest from the very first moment.

- |  |   |   |   |   |  |
|--|---|---|---|---|--|
| <p><b>Setting</b></p> <ul style="list-style-type: none"> <li>✓ Beachfront</li> <li>✓ Commercial Area</li> <li>✓ Beachside</li> <li>✓ Close To Golf</li> <li>✓ Close To Shops</li> <li>✓ Close To Sea</li> <li>✓ Close To Town</li> <li>✓ Close To Schools</li> <li>✓ Urbanisation</li> <li>✓ Front Line Beach Complex</li> </ul> | <p><b>Orientation</b></p> <ul style="list-style-type: none"> <li>✓ East</li> <li>✓ South East</li> <li>✓ South</li> </ul> | <p><b>Condition</b></p> <ul style="list-style-type: none"> <li>✓ Excellent</li> <li>✓ Recently Renovated</li> </ul> | <p><b>Pool</b></p> <ul style="list-style-type: none"> <li>✓ Communal</li> </ul>   | <p><b>Climate Control</b></p> <ul style="list-style-type: none"> <li>✓ Air Conditioning</li> <li>✓ Hot A/C</li> <li>✓ Cold A/C</li> </ul>   | <p><b>Views</b></p> <ul style="list-style-type: none"> <li>✓ Sea</li> <li>✓ Beach</li> <li>✓ Panoramic</li> </ul>  |
| <p><b>Features</b></p> <ul style="list-style-type: none"> <li>✓ Covered Terrace</li> <li>✓ Lift</li> <li>✓ Fitted Wardrobes</li> <li>✓ Near Transport</li> <li>✓ Private Terrace</li> <li>✓ Access for people with reduced mobility</li> <li>✓ Double Glazing</li> <li>✓ Courtesy Bus</li> <li>✓ Fiber Optic</li> </ul>          | <p><b>Furniture</b></p> <ul style="list-style-type: none"> <li>✓ Part Furnished</li> </ul>                                | <p><b>Kitchen</b></p> <ul style="list-style-type: none"> <li>✓ Fully Fitted</li> </ul>                              | <p><b>Garden</b></p> <ul style="list-style-type: none"> <li>✓ Communal</li> </ul> | <p><b>Security</b></p> <ul style="list-style-type: none"> <li>✓ Gated Complex</li> <li>✓ Entry Phone</li> <li>✓ 24 Hour Security</li> </ul> | <p><b>Utilities</b></p> <ul style="list-style-type: none"> <li>✓ Electricity</li> <li>✓ Drinkable Water</li> </ul> |
| <p><b>Category</b></p> <ul style="list-style-type: none"> <li>✓ Beachfront</li> <li>✓ Investment</li> </ul>  |   |   |   |   |  |