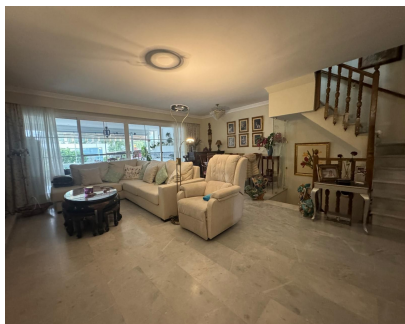


Sales - House - Atalaya  
545.000€

www.mibgroup.es  
+34 662 58 96 58  
info@mibgroup.es



Ref.-ID: MIBGR5319535

Atalaya

House

Community: 1,320 EUR / year

IBI: 716 EUR / year

Rubbish: 148 EUR / year



4



3



220 m2

Spacious Townhouse with Expansive Private Garden and Endless Potential This exceptionally large townhouse offers generous living spaces, a wonderful private garden, and an ideal location close to San Pedro de Alcántara. Situated in a well-established residential area, the property enjoys quick access to both marbella and Estepona, nearby schools, and a full range of amenities and commercial services just minutes away. Distributed over four levels — including a basement and a loft — the home provides abundant space and flexibility for family living. The main floor features a spacious living room with a modern open-plan kitchen, a guest toilet, and a large glazed terrace that leads directly to the private garden, creating a seamless indoor-outdoor flow. On the first floor, you will find the master bedroom with en-suite bathroom, along with two guest bedrooms sharing a family bathroom. Both the master bedroom and one of the guest bedrooms have access to a southwest-facing terrace, perfect for enjoying the afternoon sun. The top-floor loft, distinguished by its charming wooden floors, is currently used as a spacious bedroom. It includes an en-suite bathroom and an east-facing terrace with beautiful sea and mountain views. The basement level is exceptionally large and highly versatile, offering a multi-purpose room with windows — ideal as a games room, home cinema, gym, or additional living area. This level also includes a storage room and a separate utility room. With its generous square meters and flexible layout, this is a property full of possibilities and ideal for modernization or customization to suit your personal style. The intimate urbanization consists of just eighth townhouses and features a beautifully maintained communal garden and swimming pool, providing a peaceful and private setting.

**Setting**

- ✓ Close To Golf
- ✓ Close To Sea
- ✓ Close To Schools
- ✓ Urbanisation

**Features**

- ✓ Covered Terrace
- ✓ Fitted Wardrobes
- ✓ Games Room
- ✓ Storage Room
- ✓ Utility Room
- ✓ Ensuite Bathroom
- ✓ Wood Flooring
- ✓ Marble Flooring
- ✓ Basement

**Orientation**

- ✓ South West

**Furniture**

- ✓ Optional

**Condition**

- ✓ Good

**Kitchen**

- ✓ Fully Fitted

**Pool**

- ✓ Communal

**Garden**

- ✓ Communal
- ✓ Private

**Climate Control**

- ✓ Fireplace

**Parking**

- ✓ Private

**Views**

- ✓ Sea
- ✓ Mountain
- ✓ Garden

**Category**

- ✓ Investment
- ✓ Resale