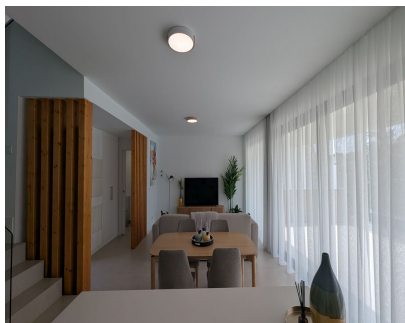


**Sales - House - Atalaya**  
**850.000€**

**www.mibgroup.es**  
**+34 662 58 96 58**  
**info@mibgroup.es**



**Ref.-ID: MIBGR5325274**

**Atalaya**

**House**



**3**



**4**



**153 m2**



**60 m2**

**\*\*Townhouse in Atalaya, Estepona - 850,000\*\*** Discover this stunning newly built townhouse in the heart of Atalaya, on Estepona's New Golden Mile. This modern and functional home is located in a quiet residential complex, ideal for enjoying peace and comfort. With a smart layout on four levels, it includes a spectacular rooftop solarium, perfect for relaxing and enjoying the Mediterranean climate. With 180 m<sup>2</sup> of built area and 160 m<sup>2</sup> of usable space, this property has 3 to 4 bedrooms, making it a versatile option for families or as an investment. The spacious living-dining room with integrated kitchen offers a bright and welcoming space, while the large terraces and private garden are perfect for enjoying the outdoors. In addition, the aerothermal system with underfloor heating ensures optimal comfort throughout the year. Located between Marbella and Estepona, this house is close to golf courses, international schools, and all necessary amenities. It also has private parking for two cars and access to a community pool. This property is suitable for people with reduced mobility and complies with energy efficiency standards, ensuring low consumption. Don't miss the opportunity to make this place your new home!

**Setting**

- ✓ Country
- ✓ Close To Golf
- ✓ Close To Shops
- ✓ Close To Town
- ✓ Close To Schools
- ✓ Urbanisation

**Features**

- ✓ Covered Terrace
- ✓ Fitted Wardrobes
- ✓ Private Terrace
- ✓ Solarium
- ✓ Games Room
- ✓ Utility Room
- ✓ Ensuite Bathroom
- ✓ Double Glazing
- ✓ Basement

**Utilities**

- ✓ Electricity

**Orientation**

- ✓ South West
- ✓ West

**Furniture**

- ✓ Optional

**Category**

- ✓ Golf
- ✓ Holiday Homes
- ✓ Investment
- ✓ Resale
- ✓ Contemporary

**Condition**

- ✓ Excellent

**Kitchen**

- ✓ Fully Fitted

**Pool**

- ✓ Communal

**Garden**

- ✓ Communal
- ✓ Private
- ✓ Easy Maintenance

**Climate Control**

- ✓ Air Conditioning
- ✓ Hot A/C
- ✓ Cold A/C
- ✓ Central Heating
- ✓ U/F Heating
- ✓ U/F/H Bathrooms

**Security**

- ✓ Gated Complex
- ✓ Entry Phone

**Views**

- ✓ Mountain
- ✓ Country
- ✓ Panoramic
- ✓ Garden

**Parking**

- ✓ Covered
- ✓ Street
- ✓ More Than One
- ✓ Private