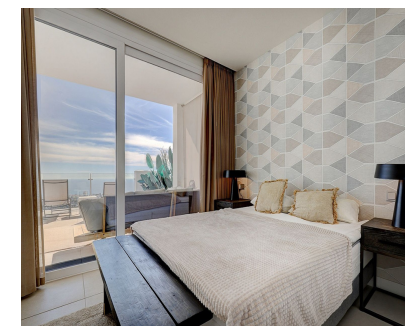


Sales - Apartment - Benalmadena  
**680.000€**

[www.mibgroup.es](http://www.mibgroup.es)  
**+34 662 58 96 58**  
[info@mibgroup.es](mailto:info@mibgroup.es)



Ref.-ID: MIBGR5379907

Benalmadena

Apartment

Community: 2,892 EUR / year

IBI: 819 EUR / year

Rubbish: 172 EUR / year



3



2



105 m<sup>2</sup>

Modern Duplex Penthouse with Panoramic Sea Views in Benalmádena This elegant duplex penthouse enjoys stunning panoramic sea views and a prime location in Benalmádena, just a short drive from the beach and the picturesque village of Benalmádena Pueblo. The main floor features a bright open-plan living area with a fully equipped kitchen and breakfast bar, leading out to a spacious terrace ideal for dining and relaxing. Two bedrooms are located on this level, one with direct terrace access, along with a convenient laundry room. On the upper level there is the main bedroom with an en-suite bathroom and access to a spectacular rooftop terrace with a private jacuzzi and breathtaking views of the Mediterranean. Finished to a high standard, the property offers ceramic tile flooring throughout, hot and cold air conditioning, underfloor heating, smoke detectors, an alarm system, and built-in wardrobes in all bedrooms. Set within a secure and beautifully maintained complex, residents enjoy excellent communal facilities including a large swimming pool, gym, paddle tennis courts, jacuzzi, whirlpool, sauna, cinema room, and a children's play area. The property includes two underground parking spaces and a storage room. Perfectly located close to Benalmádena Pueblo's restaurants, cafés, and amenities, and only a short drive from the coast. Málaga Airport is just 15 minutes away, making this an ideal holiday home, second residence, or investment opportunity with strong rental potential. The neighbouring penthouse is also available for €680,000. Both can be purchased together at a discounted combined price.

- |  |  |   |   |   |  |
|--|--|---|---|---|--|
| <p><b>Setting</b></p> <ul style="list-style-type: none"> <li>✓ Close To Golf</li> <li>✓ Close To Shops</li> <li>✓ Close To Sea</li> <li>✓ Close To Town</li> <li>✓ Close To Schools</li> <li>✓ Urbanisation</li> </ul>   | <p><b>Orientation</b></p> <ul style="list-style-type: none"> <li>✓ South East</li> <li>✓ South</li> </ul>  | <p><b>Condition</b></p> <ul style="list-style-type: none"> <li>✓ Excellent</li> <li>✓ Good</li> </ul> | <p><b>Pool</b></p> <ul style="list-style-type: none"> <li>✓ Communal</li> <li>✓ Indoor</li> </ul>                                   | <p><b>Climate Control</b></p> <ul style="list-style-type: none"> <li>✓ Air Conditioning</li> <li>✓ Hot A/C</li> <li>✓ Cold A/C</li> <li>✓ U/F Heating</li> <li>✓ U/F/H Bathrooms</li> </ul> | <p><b>Views</b></p> <ul style="list-style-type: none"> <li>✓ Sea</li> <li>✓ Mountain</li> <li>✓ Panoramic</li> </ul> |
| <p><b>Features</b></p> <ul style="list-style-type: none"> <li>✓ Covered Terrace</li> <li>✓ Lift</li> <li>✓ Fitted Wardrobes</li> <li>✓ Near Transport</li> <li>✓ Private Terrace</li> <li>✓ Solarium</li> <li>✓ WiFi</li> <li>✓ Gym</li> <li>✓ Paddle Tennis</li> <li>✓ Storage Room</li> <li>✓ Utility Room</li> <li>✓ Ensuite Bathroom</li> <li>✓ Jacuzzi</li> <li>✓ Double Glazing</li> </ul> | <p><b>Furniture</b></p> <ul style="list-style-type: none"> <li>✓ Fully Furnished</li> </ul>  | <p><b>Kitchen</b></p> <ul style="list-style-type: none"> <li>✓ Fully Fitted</li> </ul>                | <p><b>Garden</b></p> <ul style="list-style-type: none"> <li>✓ Communal</li> <li>✓ Landscaped</li> <li>✓ Easy Maintenance</li> </ul> | <p><b>Security</b></p> <ul style="list-style-type: none"> <li>✓ Gated Complex</li> <li>✓ Entry Phone</li> <li>✓ Alarm System</li> </ul>   | <p><b>Parking</b></p> <ul style="list-style-type: none"> <li>✓ Underground</li> <li>✓ More Than One</li> </ul>       |
| <p><b>Utilities</b></p> <ul style="list-style-type: none"> <li>✓ Electricity</li> </ul>  | <p><b>Category</b></p> <ul style="list-style-type: none"> <li>✓ Holiday Homes</li> <li>✓ Investment</li> <li>✓ Resale</li> <li>✓ Contemporary</li> </ul> |   |   |   |  |