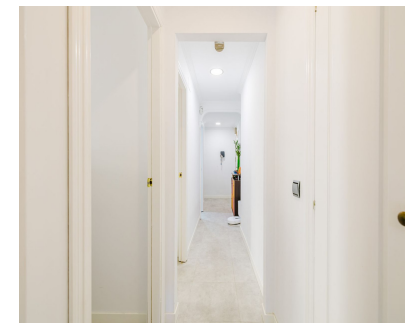


Sales - Apartment - Benalmadena  
460.000€

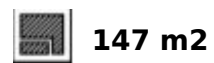
[www.mibgroup.es](http://www.mibgroup.es)  
+34 662 58 96 58  
[info@mibgroup.es](mailto:info@mibgroup.es)



Ref.-ID: MIBGR5380132

Benalmadena

Apartment



Exclusive 3-bedroom home with sea views, on the second line of the beach - Torrequebrada, Benalmádena Discover this magnificent property located in the prestigious area of Torrequebrada, in Benalmádena Costa. With 147 m<sup>2</sup> built, this home combines design, comfort, and an unbeatable location, just a few meters from the sea and surrounded by essential services. The property, perfectly distributed, is on the fourth floor of a building with an elevator and offers partial sea views from its private terrace. Upon entering, a hall leads to a modern, fully equipped American-style kitchen, connected to a spacious and bright living-dining room. From here, you can access the terrace, an ideal space to enjoy the Mediterranean climate. The home has three bedrooms, one of them en-suite with sea views, all with fitted wardrobes, and two complete bathrooms in excellent condition. Among the property's features are air conditioning, a garage space included in the price, and excellent conservation and brightness. Furthermore, it is part of an exclusive private urbanization facing the sea that includes a communal swimming pool, large gardens with flowers and fruits, a picnic area, a children's playground, and sports courts, making it a perfect option for both a permanent residence and an investment. The location of this home is simply unbeatable. The urbanization is located opposite a Lidl supermarket. The Torrequebrada International School, known for its academic excellence, is 500 meters away. For leisure and shopping, Puerto Marina Shopping Center is just a few minutes away by car, offering a wide variety of shops, restaurants, and activities. In terms of public transport, the closest bus lines include the M-103 and M-110, which connect the area with other strategic points on the Costa del Sol. Additionally, the Torremuelle commuter train station (Line C-1) is a few minutes away, ensuring excellent communication with Malaga and Fuengirola. Although there is no metro in Benalmádena, the road and public transport connections compensate for this absence. The Torrequebrada neighborhood is known for its exclusivity, tranquility, security, and high-quality services. Its proximity to the sea, golf courses, and a wide range of gastronomic and leisure options make it a privileged environment. The area is ideal for both families and those seeking a relaxed lifestyle without sacrificing comfort. Don't miss this unique gem facing the sea. Contact us for more information or to schedule your visit.

**Orientation**

✓ South

**Condition**

✓ Good

**Pool**

✓ Communal

**Features**

- ✓ Lift
- ✓ Fitted Wardrobes
- ✓ Private Terrace
- ✓ Storage Room

**Garden**

✓ Communal

**Parking**

✓ Garage