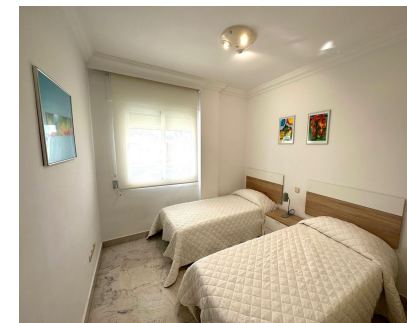


**Long Term Rental - Apartment - Puerto Banús**  
**2.500€ / Month**

**www.mibgroup.es**  
**+34 662 58 96 58**  
**info@mibgroup.es**



**Ref.-ID: MIBGR4676080**

**Puerto Banús**

**Apartment**



**2**



**2**



**90 m2**

AVAILABLE LONG TERM from NOW! Nice apartment with lovely views to the square of Commercial Centre Marina Banus and Puerto Banus, ia situated in a very convenient location, in Marina Banus complex. Very sunny. Higher floor. Nicely furnished, clean and cosy. Entrance hall, a kitchen with american bar, a lounge, with exit to a terrace from the lounge and master bedroom. 2 bedrooms, 2 bathrooms (1 en-suite). Has parking space included in the price. Next to Puerto Banus, El Corte Inglés, Marina Banus, children playground, boutiques, cafés, shops, restaurants. Next to the beach. There is a pool, gym and paddle tennis corte in the complex.

<b>Setting</b> <div><div></div>Beachfront</div> <div><div></div>Town</div> <div><div></div>Commercial Area</div> <div><div></div>Beachside</div> <div><div></div>Port</div> <div><div></div>Close To Shops</div> <div><div></div>Close To Sea</div> <div><div></div>Marina</div> <div><div></div>Close To Marina</div> <div><div></div>Urbanisation</div>	<b>Orientation</b> <div><div></div>West</div>	<b>Condition</b> <div><div></div>Good</div>	<b>Pool</b> <div><div></div>Communal</div>	<b>Climate Control</b> <div><div></div>Air Conditioning</div> <div><div></div>Hot A/C</div> <div><div></div>Cold A/C</div>	<b>Views</b> <div><div></div>Port</div> <div><div></div>Urban</div> <div><div></div>Street</div>
<b>Features</b> <div><div></div>Covered Terrace</div> <div><div></div>Lift</div> <div><div></div>Fitted Wardrobes</div> <div><div></div>Near Transport</div> <div><div></div>Solarium</div> <div><div></div>WiFi</div> <div><div></div>Gym</div> <div><div></div>Paddle Tennis</div> <div><div></div>Ensuite Bathroom</div> <div><div></div>Marble Flooring</div> <div><div></div>Double Glazing</div> <div><div></div>24 Hour Reception</div> <div><div></div>Restaurant On Site</div>	<b>Furniture</b> <div><div></div>Fully Furnished</div>	<b>Kitchen</b> <div><div></div>Fully Fitted</div>	<b>Security</b> <div><div></div>Entry Phone</div> <div><div></div>Alarm System</div> <div><div></div>24 Hour Security</div>	<b>Parking</b> <div><div></div>Underground</div>	<b>Utilities</b> <div><div></div>Electricity</div>
<b>Category</b> <div><div></div>Beachfront</div> <div><div></div>Cheap</div>					