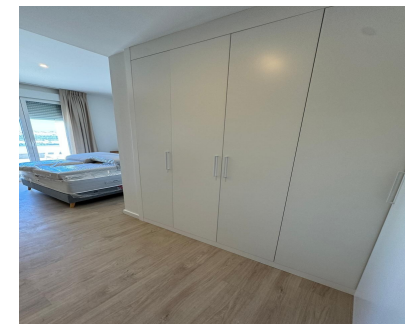
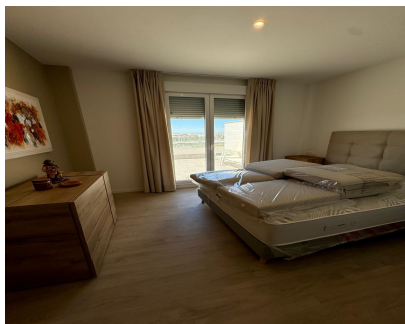
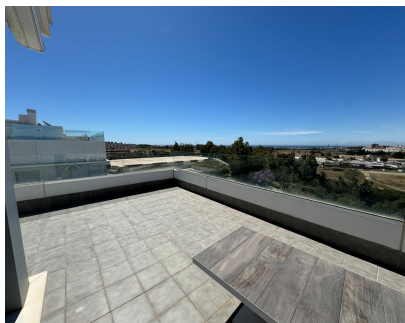


Long Term Rental - Apartment - Nueva Andalucía
4.000€ / Month

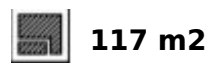
www.mibgroup.es
+34 662 58 96 58
info@mibgroup.es



Ref.-ID: MIBGR4753708

Nueva Andalucía

Apartment



Presenting The Best Positioned Luxurious Penthouse in Jardines de Guadaiza Discover contemporary living at its finest in this immaculately renovated penthouse, nestled within the sought-after urbanization of Jardines de Guadaiza. Situated in the vibrant new district of Nueva Andalucia, known as La Campana, this property is a true gem in a prime residential location. Here, you'll find yourself enveloped by a tapestry of restaurants, boutiques, golf courses, and other conveniences, all within a leisurely stroll. Additionally, you're just a short drive away from the beloved locales of San Pedro, Puerto Banus Harbour, and Puente Romano. This modern apartment underwent a top-tier renovation in 2022, showcasing a blend of elegance and functionality. It boasts an airy living space seamlessly integrated with an open-plan kitchen, along with two generously sized bedrooms and bathrooms. What truly sets this property apart is the magnificent terrace, spanning over 40 square meters. This outdoor oasis not only features an invigorating outdoor shower but also offers direct access from every room, providing breathtaking vistas of the Mediterranean Sea and the iconic La Concha mountain. Moreover, you'll relish the ease of accessing the community swimming pool, conveniently located on the same level, offering you panoramic vistas that are nothing short of spectacular. The building's communal areas are equally impressive, encompassing a fully equipped gym, tranquil chillout zones, and a communal room complete with a kitchen, perfect for hosting gatherings and events. Positioned in a privileged location, with proximity to schools, golf courses, and excellent transportation links, this property stands as an ideal year-round residence.

Setting

- ✓ Close To Golf
- ✓ Close To Shops
- ✓ Close To Sea
- ✓ Close To Schools
- ✓ Urbanisation

Orientation

- ✓ South

Condition

- ✓ Excellent

Pool

- ✓ Communal

Climate Control

- ✓ Air Conditioning
- ✓ Hot A/C
- ✓ Cold A/C

Views

- ✓ Sea
- ✓ Beach
- ✓ Urban

Features

- ✓ Covered Terrace
- ✓ Lift
- ✓ Fitted Wardrobes
- ✓ Near Transport
- ✓ Private Terrace
- ✓ WiFi
- ✓ Gym
- ✓ Ensuite Bathroom
- ✓ Access for people with reduced mobility
- ✓ Basement

Furniture

- ✓ Fully Furnished

Kitchen

- ✓ Fully Fitted

Security

- ✓ Gated Complex

Parking

- ✓ Underground

Utilities

- ✓ Electricity

Category

- ✓ Holiday Homes