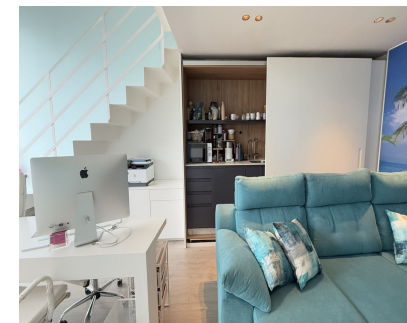


Long Term Rental - Commercial - Nueva Andalucía
1.700€ / Month

www.mibgroup.es
+34 662 58 96 58
info@mibgroup.es



Ref.-ID: MIBGR4946365

Nueva Andalucía

Commercial



2



1



52 m2

OFFICE TRANSFER IN AZALEA BEACH, PRIME LOCATION NEAR PUERTO BANÚS An office traspaso is available in the exclusive Azalea Beach commercial center, one of the most sought-after areas near Puerto Banús, where available spaces are extremely rare. Office Features: ✓ Prime location with high foot and vehicle traffic ✓ Total area: 52 m² Ground floor: 33.58 m² Upper floor: 18.4 m² ✓ 1 bathroom ✓ Modern interior with a functional layout ✓ Ideal for various business activities Financial Details: Traspaso Price: €40,000 Rent: €1,700 + IVA + water and light bills Don't miss this unique opportunity to establish your business in Azalea Beach! Contact us for more details or to schedule a viewing.

- Setting**
- ✓ Commercial Area
 - ✓ Close To Port
 - ✓ Close To Shops
 - ✓ Close To Schools

- Furniture**
- ✓ Fully Furnished

- Orientation**
- ✓ North
- Security**
- ✓ Alarm System

- Condition**
- ✓ Excellent
- Parking**
- ✓ Street

- Climate Control**
- ✓ Air Conditioning

- Views**
- ✓ Mountain
 - ✓ Urban
 - ✓ Street

- Features**
- ✓ Near Transport
 - ✓ WiFi
 - ✓ Fiber Optic