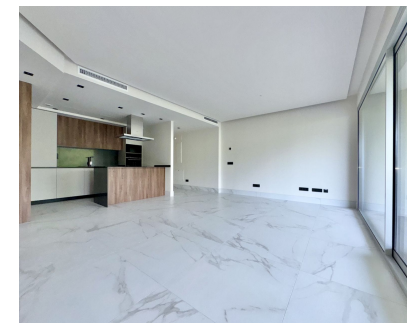


Long Term Rental - Apartment - San Pedro de Alcántara
3.700€ / Month

www.mibgroup.es
+34 662 58 96 58
info@mibgroup.es



Ref.-ID: MIBGR5077309

San Pedro de Alcántara

Apartment



3



2



155 m2

New modern apartments in the prestigious MARE complex is a modern residential complex from the renowned developer Taylor Wimpey, located in San Pedro de Alcantara, just a few minutes walk from the beach and promenade, as well as in close proximity to the historic city centre and the famous Puerto Banus. The neighbourhood is characterised by wide modern avenues, bicycle paths, green areas and well-developed infrastructure: restaurants, shops, public transport and everything you need for a comfortable life are close by. Advantages and infrastructure: - To the beach - 4 minutes walk, to the centre of San Pedro - 3 minutes. - Direct transport accessibility: 5 minutes by car to Puerto Banus, 40 minutes to Malaga airport. - The area is actively developing and is considered one of the most promising in Marbella. - The complex has implemented modern standards of energy efficiency and safety (compliance with the latest building regulations in Spain) Briefly about the advantages: - Modern design and premium quality construction - Spacious terraces and bright interiors - Gated and secured area with swimming pool and green areas - Unique location close to the sea and all the infrastructure MARE - ideal for living, holiday or investment on the Costa del Sol.

Setting <div><div></div> Town</div> <div><div></div> Commercial Area</div> <div><div></div> Beachside</div> <div><div></div> Close To Shops</div> <div><div></div> Close To Sea</div> <div><div></div> Close To Schools</div> <div><div></div> Urbanisation</div>	Orientation <div><div></div> South East</div>	Condition <div><div></div> Excellent</div> <div><div></div> New Construction</div>	Pool <div><div></div> Communal</div> <div><div></div> Children`s Pool</div>	Climate Control <div><div></div> Air Conditioning</div>	Views <div><div></div> Mountain</div> <div><div></div> Urban</div>
Features <div><div></div> Covered Terrace</div> <div><div></div> Lift</div> <div><div></div> Near Transport</div> <div><div></div> Private Terrace</div> <div><div></div> Domotics</div>	Furniture <div><div></div> Not Furnished</div>	Kitchen <div><div></div> Fully Fitted</div>	Garden <div><div></div> Communal</div>	Security <div><div></div> Gated Complex</div> <div><div></div> 24 Hour Security</div>	Parking <div><div></div> Underground</div>
Category <div><div></div> Contemporary</div>					