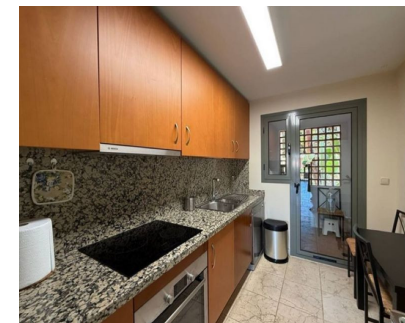
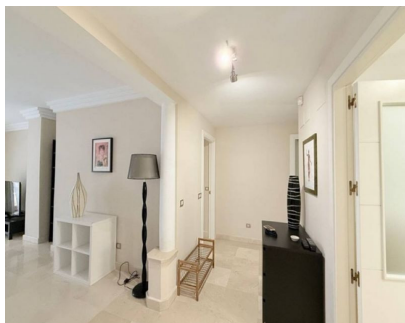


Long Term Rental - Apartment - Estepona
2.500€ / Month

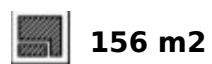
www.mibgroup.es
+34 662 58 96 58
info@mibgroup.es



Ref.-ID: MIBGR5108023

Estepona

Apartment



Discover this magnificent ground floor apartment with a private garden, located in the exclusive Benatalaya development in Benahavís (Málaga). Enjoy an unbeatable location right next to Mercadona supermarket and the prestigious Atalaya International Bilingual School, and just a few minutes' drive from Marbella, Estepona, the beach, and all essential services. With 156 m² built and 28m² of private garden, this bright and well-distributed property features two spacious bedrooms with built-in wardrobes, two full bathrooms, a fully equipped kitchen, and a cozy living-dining room that opens onto a charming terrace with direct access to a private garden — ideal for families or for simply relaxing outdoors. The apartment is sold fully furnished and includes air conditioning, an underground parking space, and a storage room. Located on a south- and west-facing ground floor, this home enjoys abundant natural light throughout the day and a peaceful, welcoming atmosphere. Benatalaya is synonymous with quality living: it offers 24-hour security, several communal swimming pools — including a heated indoor pool — a fully equipped gym, and lush tropical gardens that create a serene and relaxing environment. The entire complex is beautifully maintained and ideal for those who value comfort and understated luxury. Perfect as a permanent residence, holiday home, or high-potential investment on the Costa del Sol, this apartment truly offers it all: prime location, great amenities, privacy, and an exceptional lifestyle.

Setting

- ✓ Close To Shops
- ✓ Close To Schools

Orientation

- ✓ South West

Condition

- ✓ Excellent

Pool

- ✓ Communal
- ✓ Indoor
- ✓ Heated

Climate Control

- ✓ Air Conditioning

Views

- ✓ Garden

Features

- ✓ Lift
- ✓ Fitted Wardrobes
- ✓ Private Terrace
- ✓ Gym
- ✓ Sauna
- ✓ Utility Room
- ✓ Ensuite Bathroom

Furniture

- ✓ Fully Furnished

Garden

- ✓ Private

Security

- ✓ Gated Complex
- ✓ 24 Hour Security

Parking

- ✓ Private