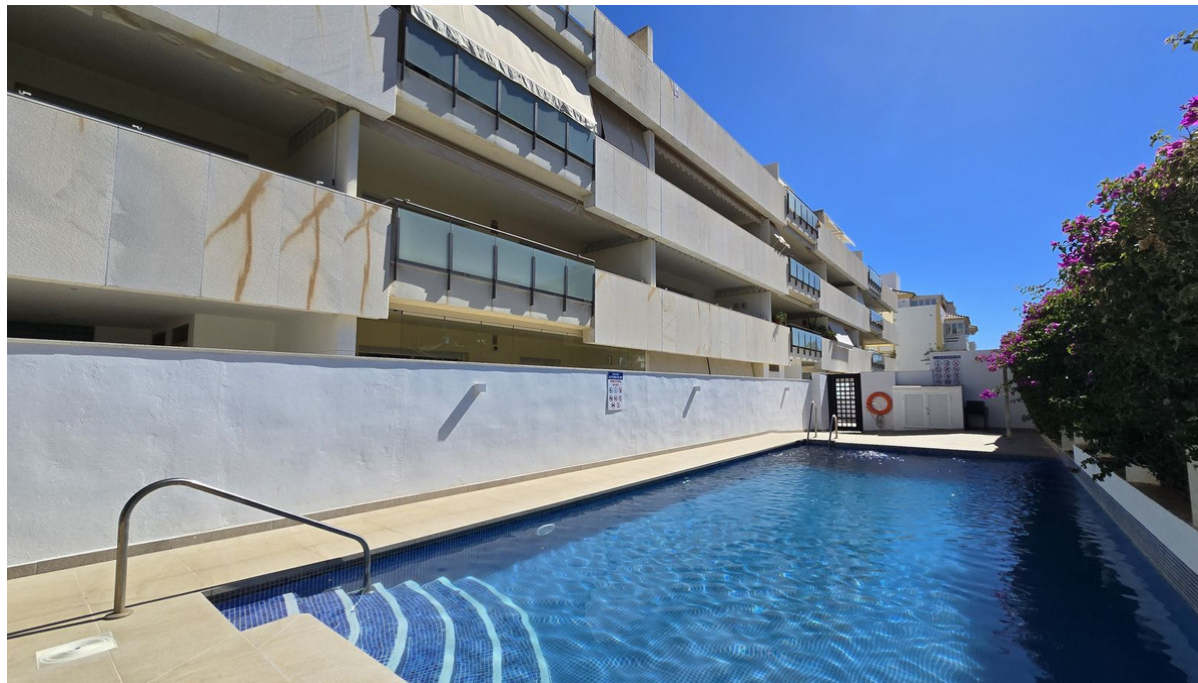


Long Term Rental - Apartment - San Pedro de Alcántara
2.400€ / Month

www.mibgroup.es
+34 662 58 96 58
info@mibgroup.es



Ref.-ID: MIBGR5183710

San Pedro de Alcántara

Apartment



2



2



90 m2

BEach side, San Pedro de Alcántara, Marbella, Exceptional Apartment Just 100 Metres from the Beach — San Pedro de Alcántara, Marbella Only tenants with excellent professional and income references will be considered. Advance rental payment will be required and negotiated according to references provided. Experience coastal living at its finest. This beautifully presented apartment is located just 150 metres from the stunning promenade and sandy beaches of San Pedro de Alcántara, Marbella. Enjoy a wide selection of seaside restaurants, cafes, and shops right at your doorstep, with Laude International College and a Spanish public school only a 10-minute walk away. Situated in a well-maintained, low-rise building, this west-facing apartment offers lateral sea views and peaceful pool views from its spacious terrace — elegantly furnished with high-end Italian outdoor furniture, perfect for relaxing or entertaining. Inside, the property features: 2 bedrooms and 2 bathrooms A fully equipped kitchen and separate laundry room A bright living room and main bedroom with direct access to the terrace Underground parking space included in the rent Few have the privilege of living this close to the sea — now it's your opportunity. Request your viewing today.

Setting <div><div></div> Town</div> <div><div></div> Beachside</div> <div><div></div> Close To Shops</div> <div><div></div> Close To Sea</div> <div><div></div> Close To Town</div> <div><div></div> Close To Schools</div>	Orientation <div><div></div> West</div>	Condition <div><div></div> Good</div>	Pool <div><div></div> Communal</div>	Climate Control <div><div></div> Air Conditioning</div> <div><div></div> Hot A/C</div> <div><div></div> Cold A/C</div>	Views <div><div></div> Sea</div> <div><div></div> Garden</div> <div><div></div> Pool</div>
Features <div><div></div> Covered Terrace</div> <div><div></div> Lift</div> <div><div></div> Fitted Wardrobes</div> <div><div></div> Near Transport</div> <div><div></div> Private Terrace</div> <div><div></div> Utility Room</div> <div><div></div> Ensuite Bathroom</div> <div><div></div> Marble Flooring</div> <div><div></div> Double Glazing</div>	Furniture <div><div></div> Fully Furnished</div>	Kitchen <div><div></div> Fully Fitted</div>	Garden <div><div></div> Communal</div>	Security <div><div></div> Gated Complex</div> <div><div></div> Electric Blinds</div>	Parking <div><div></div> Underground</div>
Utilities <div><div></div> Electricity</div> <div><div></div> Drinkable Water</div>	Category <div><div></div> Resale</div>				