

## Sales - Plot - La Cala Golf

# 242.500€

**La Cala Golf**

**Plot**



**1402 m2**

This superb building plot offers the most outstanding panoramic sea and mountain views. The 2 next door plots have already been sold and the plot backs onto a green zone meaning that nobody can build in front and in any way obstruct the wonderful views. The plot of 1.401m2 is located near the golf clubhouse, with services of: electricity, telephone, water, sewage, and 24 hour on site security. Current building regulations allow you to build your detached villa of 265 m2 + uncovered terraces, pool and basement Orientation : East, South East, South. Maximum height: 7m allowing 2 floors plus basement area, garage and swimming pool The La Cala Resort is a golf complex in the municipality of Mijas and in the province of Málaga. It includes three 18-hole golf courses (Campo América, Campo Asia and Campo Europa), a 6-hole par 3 pitch & putt course and a La Cala Golf Academy. It also has a four-star hotel La Cala Spa Hotel. The three 18-hole courses were designed by Cabell B. Robinson and have different levels of difficulty. Both the hotel and the other facilities are in traditional Andalusian style. It was inaugurated in 1989. Malaga and Marbella can be reached in about 30 minutes by car. Near the property is the famous German school la Mairena ! Please do not hesitate to contact us for further information.

### Setting

- ✓ Close To Golf
- ✓ Close To Town

### Orientation

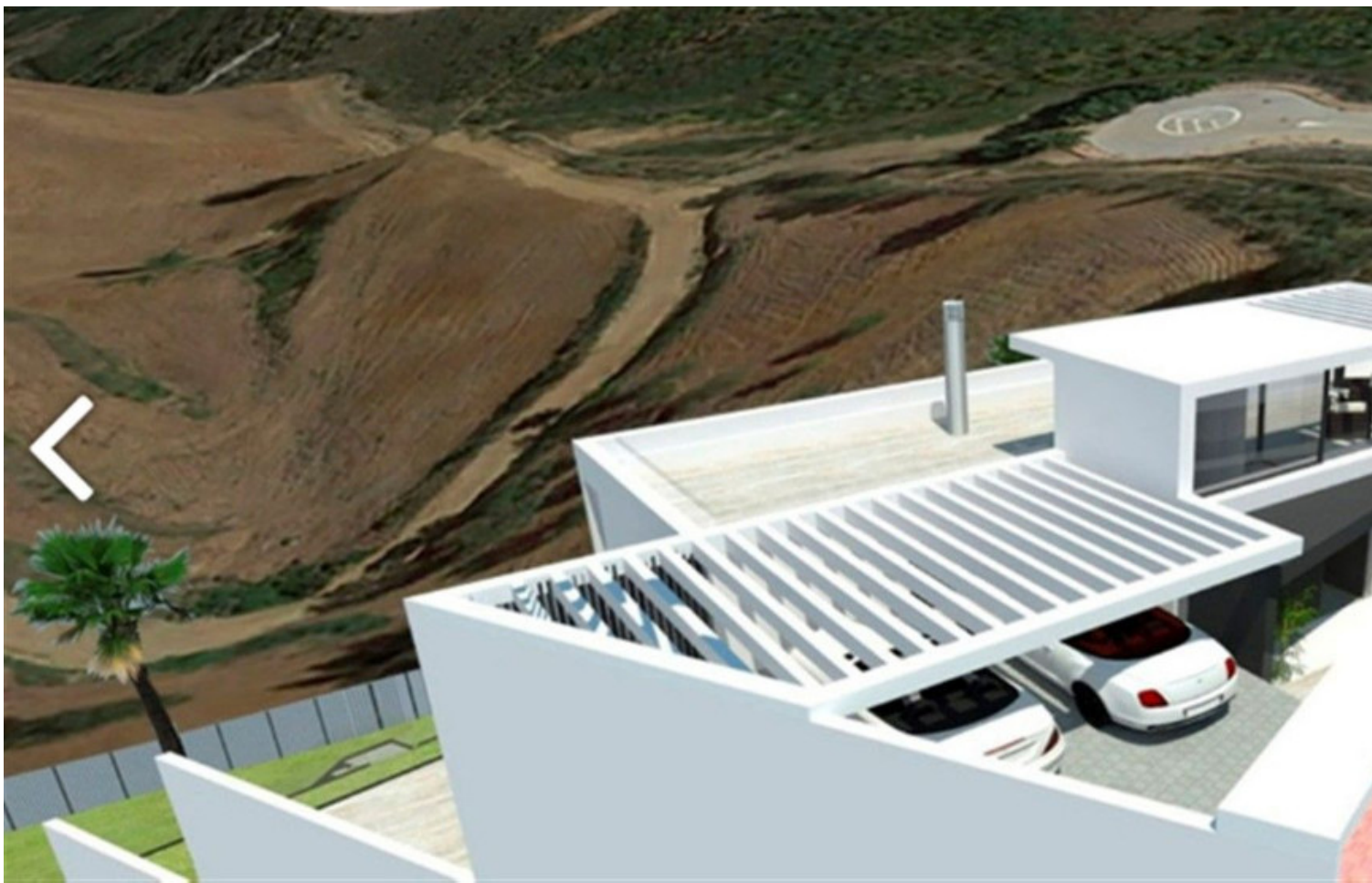
- ✓ North East
- ✓ East
- ✓ South

### Views

- ✓ Sea
- ✓ Mountain
- ✓ Golf
- ✓ Country
- ✓ Panoramic
- ✓ Garden
- ✓ Pool
- ✓ Courtyard
- ✓ Lake
- ✓ Forest

### Category

- ✓ Cheap
- ✓ Investment
- ✓ Resale
- ✓ With Planning Permission

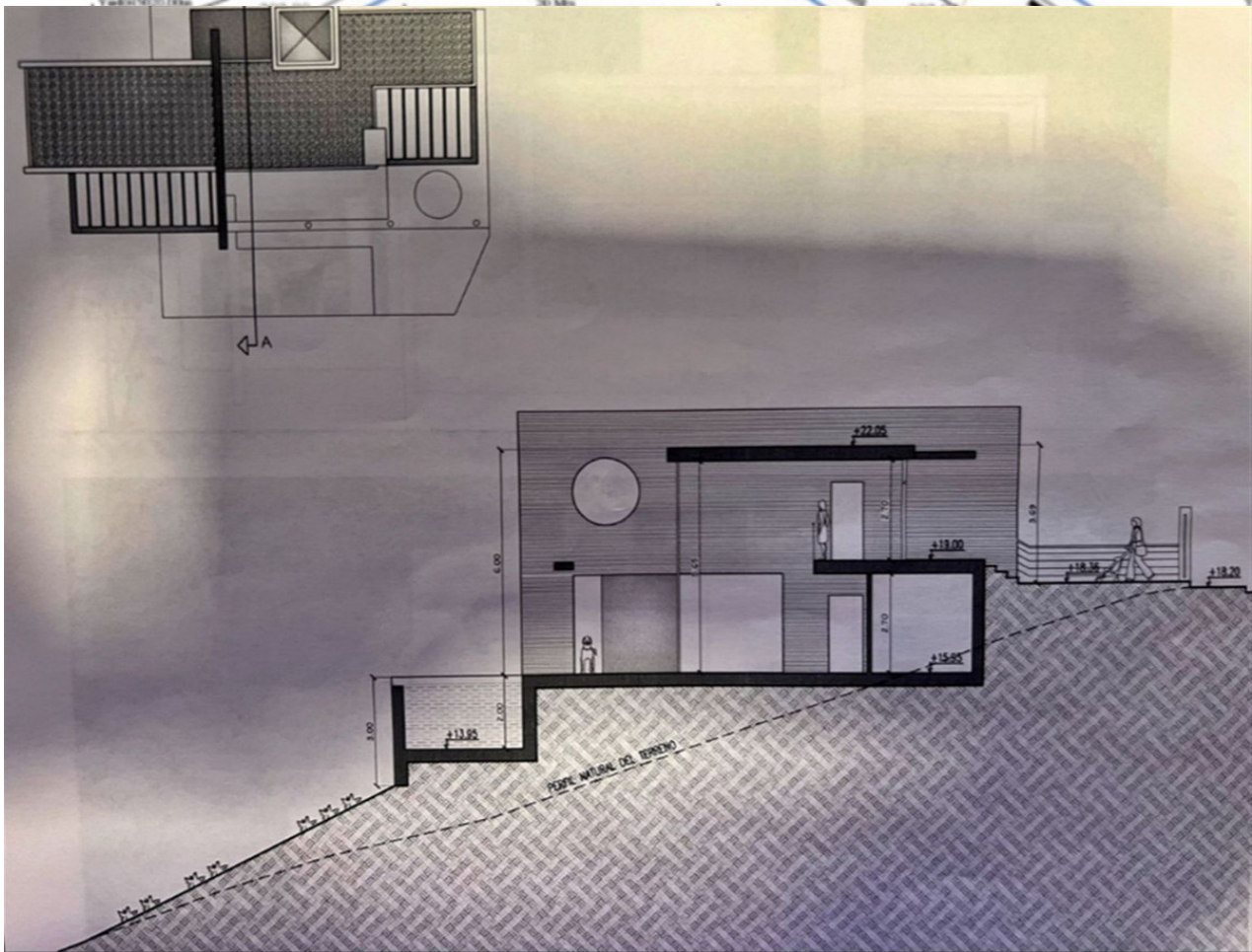


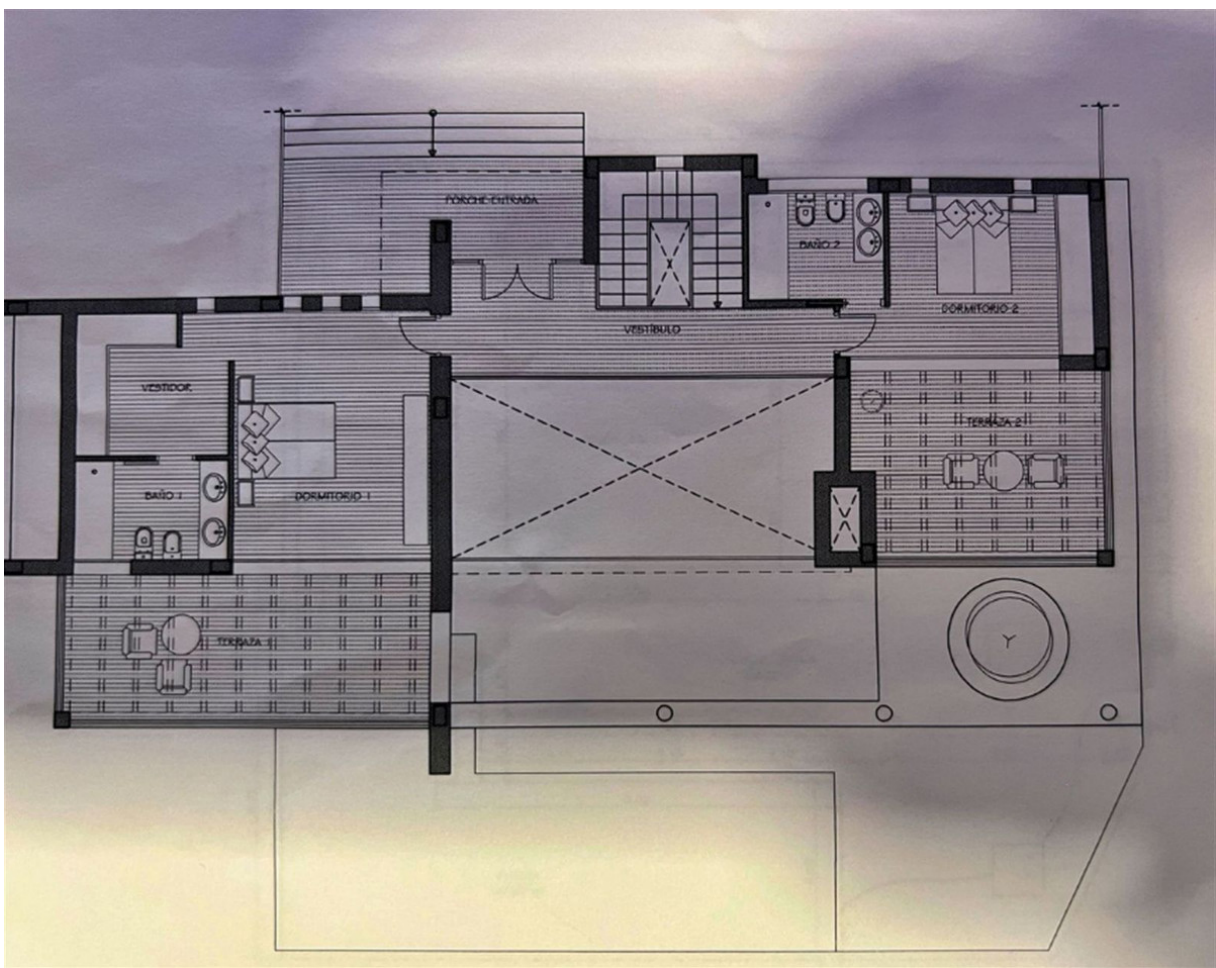
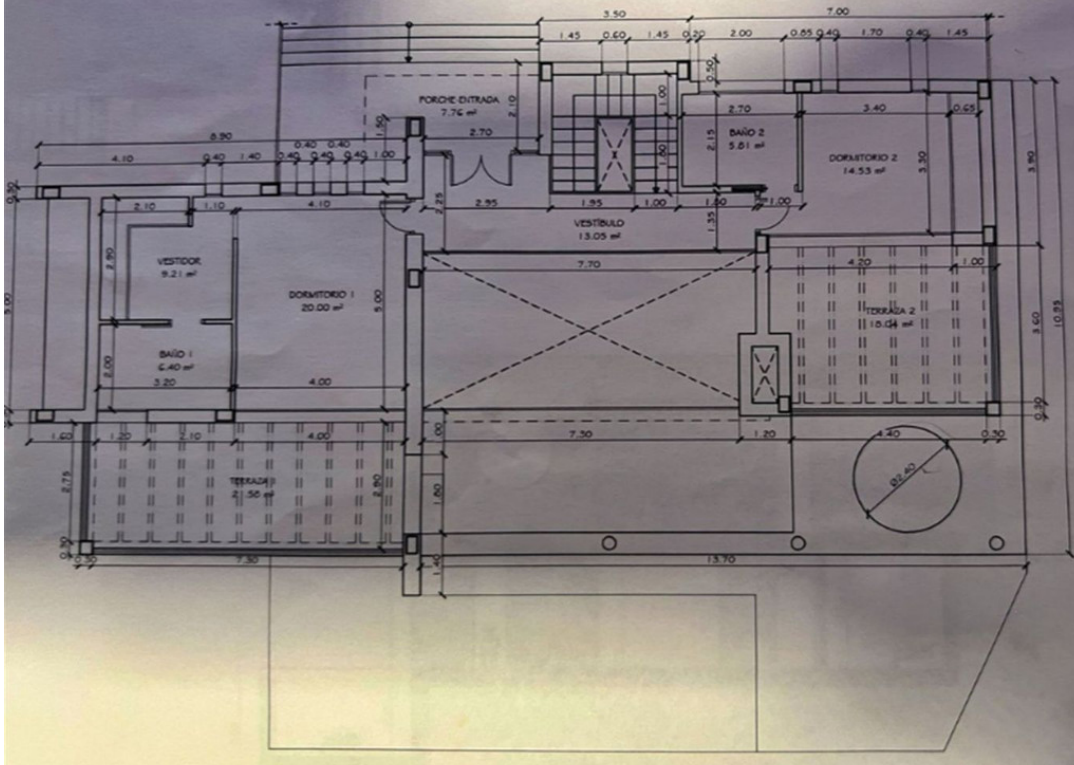


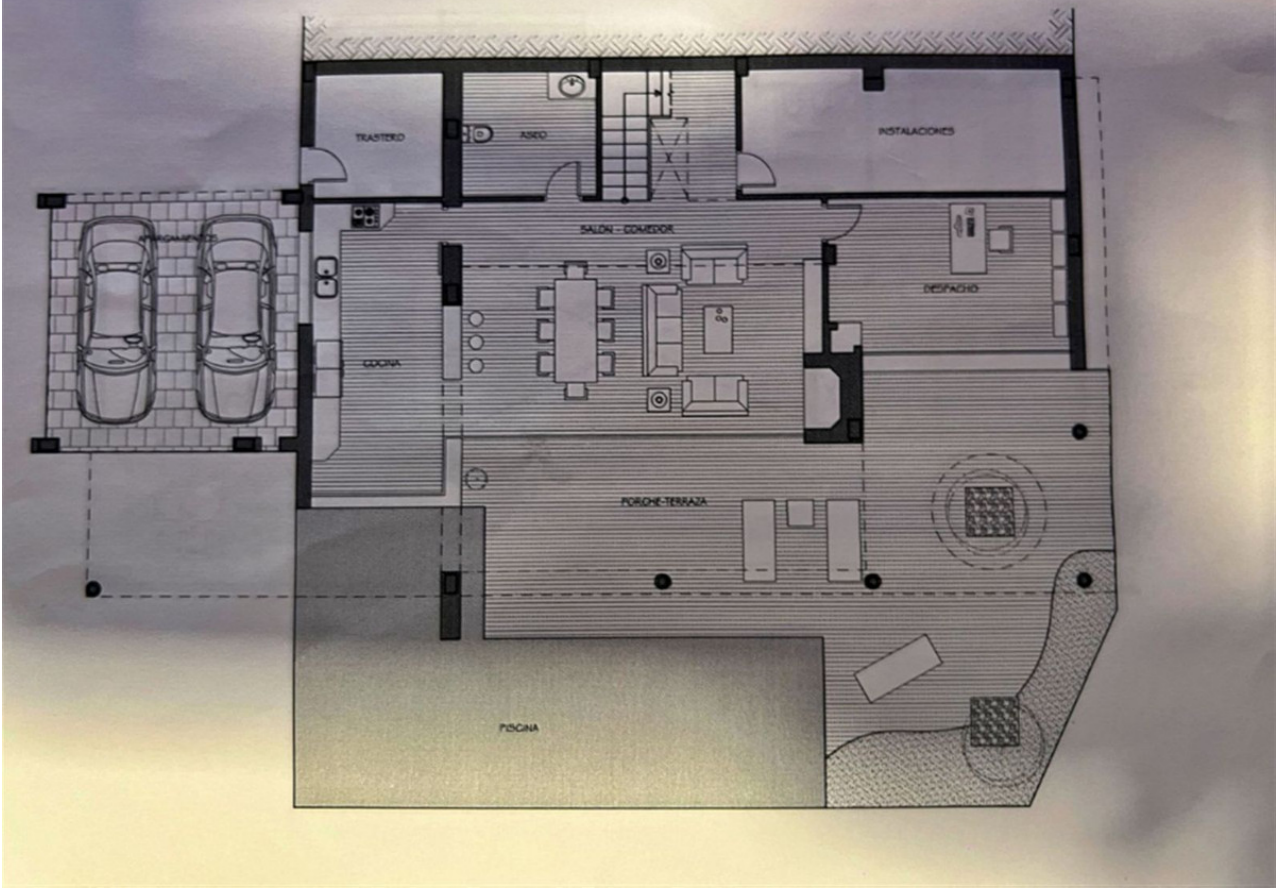


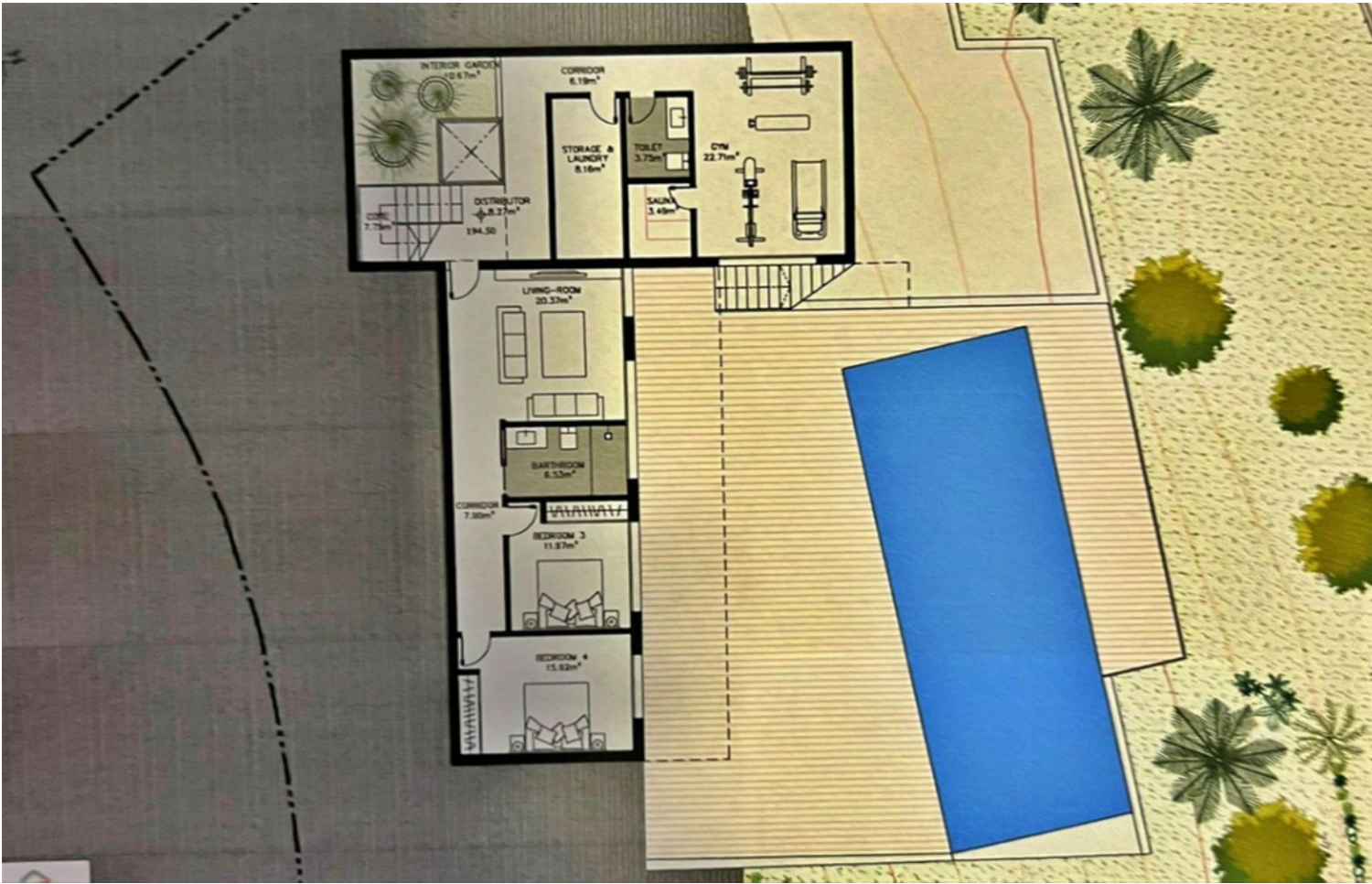










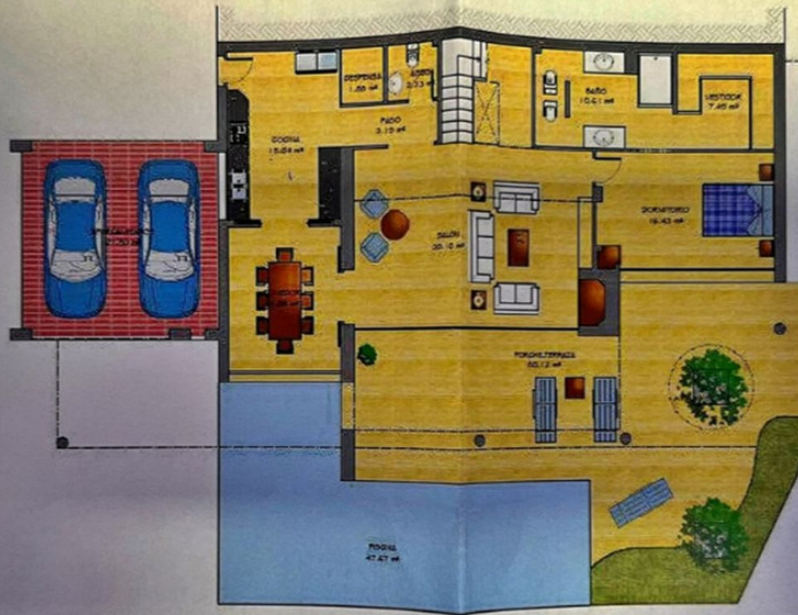


General Data

PLOT 12				
FLOOR	PROGRAM	Useful Area (m²)	Build-up Area (m²)	Total of Floors
FIRST FLOOR	Pool	13.34		
	Corridor	7.28		
	Bathroom 1	6.07		
	Cave	13.38		
	Bedroom 1	14.08		124.48
	Bedroom 2	13.90		
	Water Bedroom	18.18		
	Water Dressing	8.26		
	Water Bathroom	11.02		
<b>TOTAL</b>		<b>106.89</b>	<b>124.48</b>	<b>1</b>
GROUND FLOOR	Cave	11.85		
	Corridor	13.07		
	Water and Clothing room	49.80		
	Toilet	6.37		
	Living Room	36.22		143.30
	Stairs	10.31		
<b>TOTAL</b>		<b>138.62</b>	<b>143.30</b>	<b>1</b>
BASEMENT	Cave	7.70		
	Corridor 1	6.19		
	Corridor	6.37		
	Laundry & Storage	6.18		
	Living Room	20.37		
	Bathroom	6.53		
	Bedroom 3	11.82		108.41
	Bedroom 4	15.82		
	Corridor 2	7.30		
	Interior Garden	10.67		
	Stairs	3.75		
<b>TOTAL</b>		<b>103.89</b>	<b>108.41</b>	<b>1</b>
<b>TOTAL</b>		<b>349.40</b>	<b>425.29</b>	<b>3</b>
EXTERNAL AREAS	Pool	13.34		
	First Floor Uncovered Terrace	25.41		
	Ground Floor Uncovered Terrace	31.86		
<b>TOTAL</b>		<b>70.61</b>	<b>70.61</b>	<b>0</b>
<b>TOTAL</b>		<b>420.01</b>	<b>495.90</b>	<b>3</b>

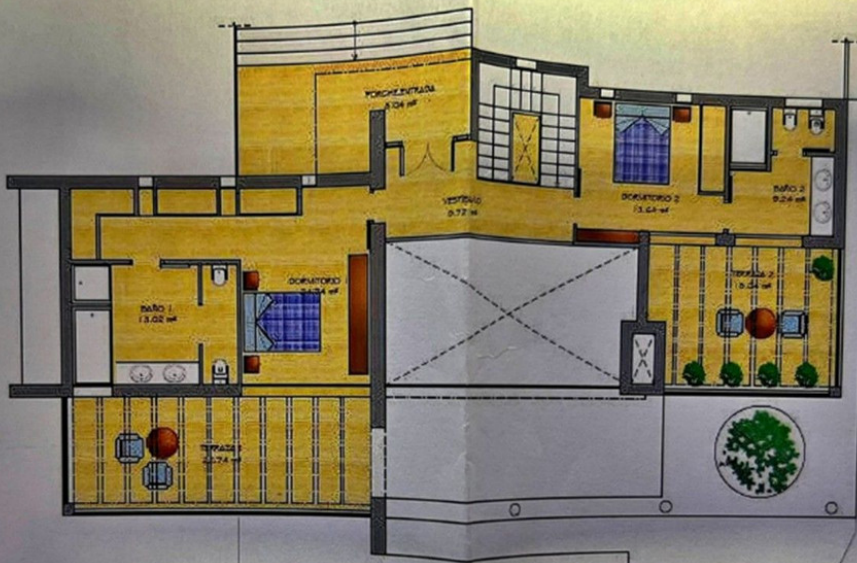
SUMMARY				
PLOT	BUILDABILITY	PLOT AREA (m²)	BUILDABILITY	SCOPED
12	0.20	1.038.00	211.70	208.00

Notes:  
 Algunas áreas pueden sufrir modificaciones a lo largo del desarrollo del proyecto.  
 Se reservan todos los derechos de uso de las imágenes.  
 Este documento es confidencial y no debe ser divulgado sin el consentimiento escrito del autor.  
 Reservados todos los derechos de uso de las imágenes, textos, gráficos o cualquier otro elemento.



PLANTA BAJA  
102.80 m<sup>2</sup>

ESCALA: 1/100



PLANTA ALTA  
94.70 m<sup>2</sup>

ESCALA: 1/100









