

Sales - House - Nueva Andalucía

485.000€

Nueva Andalucía

House

Community: 3,384 EUR / year IBI: 829 EUR / year

Rubbish: 185 EUR / year



2



3



126 m2

This a delightful townhouse inside the well know urbanization Pueblo Arabesque, Atalaya de Rio Verde, Nueva Andalucia, walking distance to the trendy Puerto Banùs and close to the restaurants, bars, shops and golf courses. The stylish house has been reformed by the current owners and is ideal for permanent living and to enjoy fabulous holidays under the sunny sky of the Costa del Sol. If you are looking to purchase a quality home, in a residential area with a high rental potential, don't miss that place! Highly recommended! Virtual tour & floor plan available. Features: - Walking distance to all amenities and Puerto Banús - Communal pool - Reformed

Orientation

✓ South West

Views

✓ Garden

Garden

✓ Communal

Condition

✓ Recently Renovated

Features

✓ Marble Flooring

Parking

✓ Communal

Pool

✓ Communal

Furniture

✓ Fully Furnished

Climate Control

✓ Hot A/C

Kitchen

✓ Fully Fitted





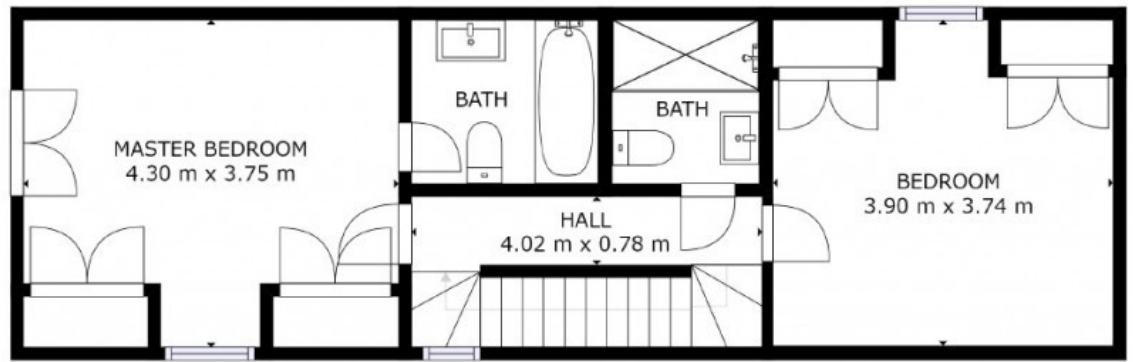




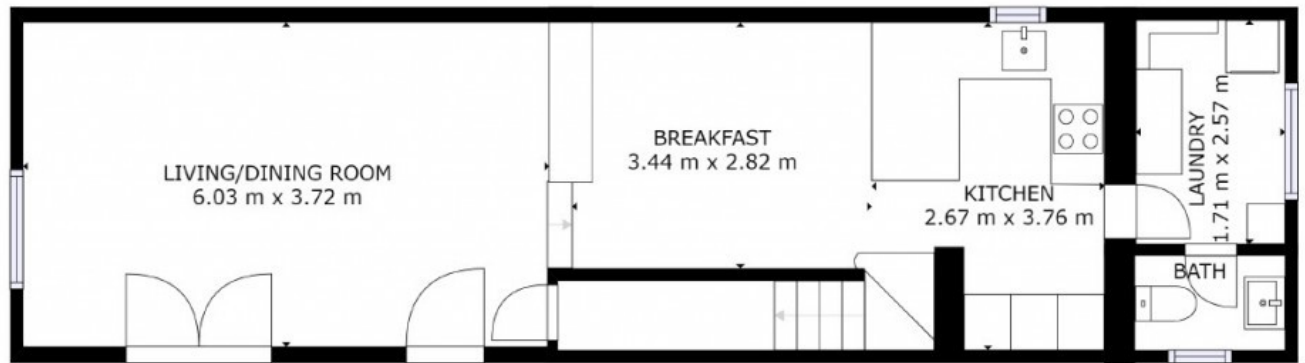








FLOOR 2



FLOOR 1

SIZES AND DIMENSIONS ARE APPROXIMATE. ACTUAL MAY VARY