

Sales - House - Estepona

2.350.000€

Estepona

House

Community: 9,756 EUR / year IBI: 1,532 EUR / year

Rubbish: 171 EUR / year



3



3



280 m2



30 m2

Experience luxury coastal living at The Islands, Estepona, an exclusive first-line beach urbanization offering direct access to the Mediterranean. This prestigious residential community combines modern architecture with elegant design, providing the perfect blend of comfort, privacy, and sophistication. Spacious contemporary townhouses feature large open-plan living areas, state-of-the-art kitchens, en-suite bedrooms, and private terraces overlooking the sea. Many homes also include rooftop solariums, private pools, and underground garages, ensuring maximum convenience and style. The urbanization offers a secure gated environment with landscaped gardens, infinity pools, a wellness area, and a gym, all just steps away from the sandy beach. Its privileged location gives you easy access to Estepona's charming old town, Puerto Banús, Marbella, and some of the Costa del Sol's best golf courses. Living at The Islands means enjoying the tranquility of beachfront living alongside first-class amenities, creating an unmatched lifestyle on the Costa del Sol. Townhouse, Estepona, Costa del Sol. 3 Bedrooms, 3 Bathrooms, Built 280 m², Terrace 90 m², Garden/Plot 30 m². Setting : Beachfront, Town, Beachside, Close To Town, Marina, Urbanisation, Front Line Beach Complex. Orientation : South. Condition : Excellent, New Construction. Pool : Communal, Indoor, Heated, Room For Pool. Climate Control : Air Conditioning, Fireplace, U/F Heating. Views : Sea. Features : Covered Terrace, Private Terrace, Solarium, Gym, Sauna, Utility Room, Jacuzzi, Domotics, 24 Hour Reception. Furniture : Fully Furnished. Kitchen : Fully Fitted. Garden : Private. Security : Gated Complex, Alarm System, 24 Hour Security. Parking : Underground, Private. Category : Beachfront, Holiday Homes, Luxury.

Setting

- ✓ Beachfront
- ✓ Town
- ✓ Beachside
- ✓ Close To Town
- ✓ Marina
- ✓ Urbanisation
- ✓ Front Line Beach Complex

Orientation

- ✓ South

Condition

- ✓ Excellent
- ✓ New Construction

Pool

- ✓ Communal
- ✓ Indoor
- ✓ Heated
- ✓ Room For Pool

Climate Control

- ✓ Air Conditioning
- ✓ Fireplace
- ✓ U/F Heating

Views

- ✓ Sea

Features

- ✓ Covered Terrace
- ✓ Private Terrace
- ✓ Solarium
- ✓ Gym
- ✓ Sauna
- ✓ Utility Room
- ✓ Jacuzzi
- ✓ Domotics
- ✓ 24 Hour Reception

Furniture

- ✓ Fully Furnished

Kitchen

- ✓ Fully Fitted

Garden

- ✓ Private

Security

- ✓ Gated Complex
- ✓ Alarm System
- ✓ 24 Hour Security

Parking

- ✓ Underground
- ✓ Private

Category

- ✓ Beachfront
- ✓ Holiday Homes
- ✓ Luxury

















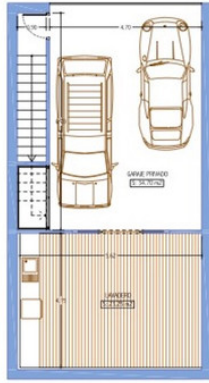








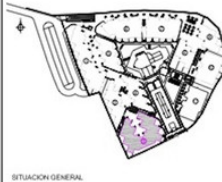




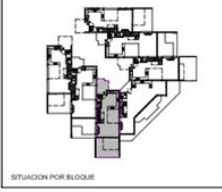
PLANTA SOTANO



PLANTA BAJA



SITUACION GENERAL



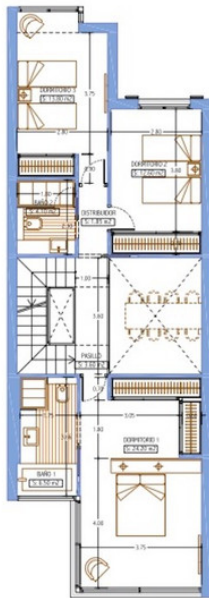
SITUACION POR BLOQUE

SUPERFICIES CONSTRUIDAS				
VIVIENDA	FORABES	TERRAZA	SOLARIUM	AREA PRIVADA
208.90 m ²	23.08 m ²	280.08 m ²		38.92 m ²
SUPERFICIES UTILES				
VIVIENDA	FORABES	TERRAZA	SOLARIUM	TOTAL
183.38 m ²	23.28 m ²	18.40 m ²	70.35 m ²	295.41 m ²

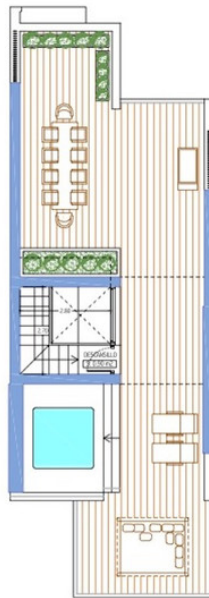
SUPERFICIE UTIL SEGUN DECRETO BOJA 219/2006
 VIVIENDA: 183.38 m² SEGUN DECRETO
 201.69 m²

LA URBANIZACION CUENTA CON UNAS ZONAS COMUNES EN PLANTA SOTANO DE 208.90 m².

EL PRESENTE DOCUMENTO ES DE CARACTER INFORMATIVO Y PODRA EXPERIMENTAR VARIACIONES POR EXIGENCIAS TECNICAS DEL PROYECTO. TODO EL MOBILIARIO, INCLUIDO EL DE LA COCINA, ES MERAMENTE INFORMATIVO. LOS SERVIDOS DE LAS PUERTAS Y LA DISTRIBUCION DE APARATOS SANITARIOS NO SON VINCULANTES. LAS SUPERFICIES EXPRESADAS SON APROXIMADAS. PODRAN EXPERIMENTAR MODIFICACIONES POR RAZONES DE NOBLE TECNICA EN EL DESARROLLO DE LA EJECUCION DE LAS OBRAS. LAS SUPERFICIES INDICADAS A CONTINUACION ESTAN CALCULADAS CONFORME AL DECRETO 219/2006 DE INFORMACIONAL CONSUMIDOR EN LA COMPRAVENTA Y ARRENDAMIENTO DE VIVIENDAS DE ANUALIDAD.



PLANTA PRIMERA



PLANTA SOLARIUM



SITUACION GENERAL



SITUACION POR BLOQUE

SUPERFICIES CONSTRUIDAS				
VIVIENDA	FORABES	TERRAZA	SOLARIUM	AREA PRIVADA
208.90 m ²	23.08 m ²	280.08 m ²		38.92 m ²
SUPERFICIES UTILES				
VIVIENDA	FORABES	TERRAZA	SOLARIUM	TOTAL
183.38 m ²	23.28 m ²	18.40 m ²	70.35 m ²	295.41 m ²

SUPERFICIE UTIL SEGUN DECRETO BOJA 219/2006
 VIVIENDA: 183.38 m² SEGUN DECRETO
 201.69 m²

LA URBANIZACION CUENTA CON UNAS ZONAS COMUNES EN PLANTA SOTANO DE 208.90 m².

EL PRESENTE DOCUMENTO ES DE CARACTER INFORMATIVO Y PODRA EXPERIMENTAR VARIACIONES POR EXIGENCIAS TECNICAS DEL PROYECTO. TODO EL MOBILIARIO, INCLUIDO EL DE LA COCINA, ES MERAMENTE INFORMATIVO. LOS SERVIDOS DE LAS PUERTAS Y LA DISTRIBUCION DE APARATOS SANITARIOS NO SON VINCULANTES. LAS SUPERFICIES EXPRESADAS SON APROXIMADAS. PODRAN EXPERIMENTAR MODIFICACIONES POR RAZONES DE NOBLE TECNICA EN EL DESARROLLO DE LA EJECUCION DE LAS OBRAS. LAS SUPERFICIES INDICADAS A CONTINUACION ESTAN CALCULADAS CONFORME AL DECRETO 219/2006 DE INFORMACIONAL CONSUMIDOR EN LA COMPRAVENTA Y ARRENDAMIENTO DE VIVIENDAS DE ANUALIDAD.