

Sales - House - Marbella

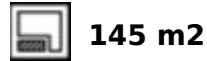
2.100.000€

Marbella

House

IBI: 2,240 EUR / year

Rubbish: 40 EUR / year



Building comprising 4 spacious independent apartments and a commercial space with a basement, located in the old town of Marbella. With a constructed area of 404 m2, plus a large 145 m2 rooftop terrace offering beautiful views of the old town and the Church of La Encarnación. The building is situated between two streets, and all apartments have access to a small terrace/balcony. The main apartment has 3 bedrooms and is the only one with direct access to the rooftop terrace. Ideal property for tourist rental. The commercial space is also available for rent.

Setting

- ✓ Town
- ✓ Close To Port
- ✓ Close To Shops
- ✓ Close To Sea
- ✓ Close To Schools
- ✓ Close To Marina

Views

- ✓ Mountain
- ✓ Urban

Parking

- ✓ Street

Orientation

- ✓ North
- ✓ East
- ✓ South
- ✓ West

Features

- ✓ Private Terrace
- ✓ Solarium
- ✓ Utility Room
- ✓ Near Church

Utilities

- ✓ Electricity
- ✓ Drinkable Water
- ✓ Telephone

Condition

- ✓ Good

Furniture

- ✓ Not Furnished

Category

- ✓ Resale

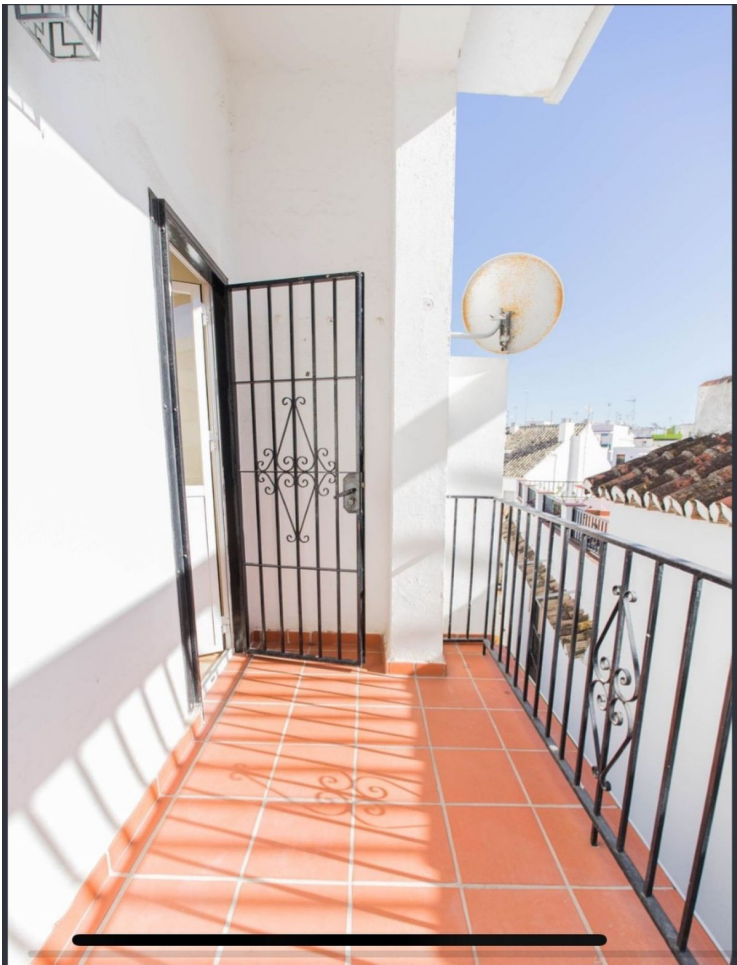
Climate Control

- ✓ Fireplace

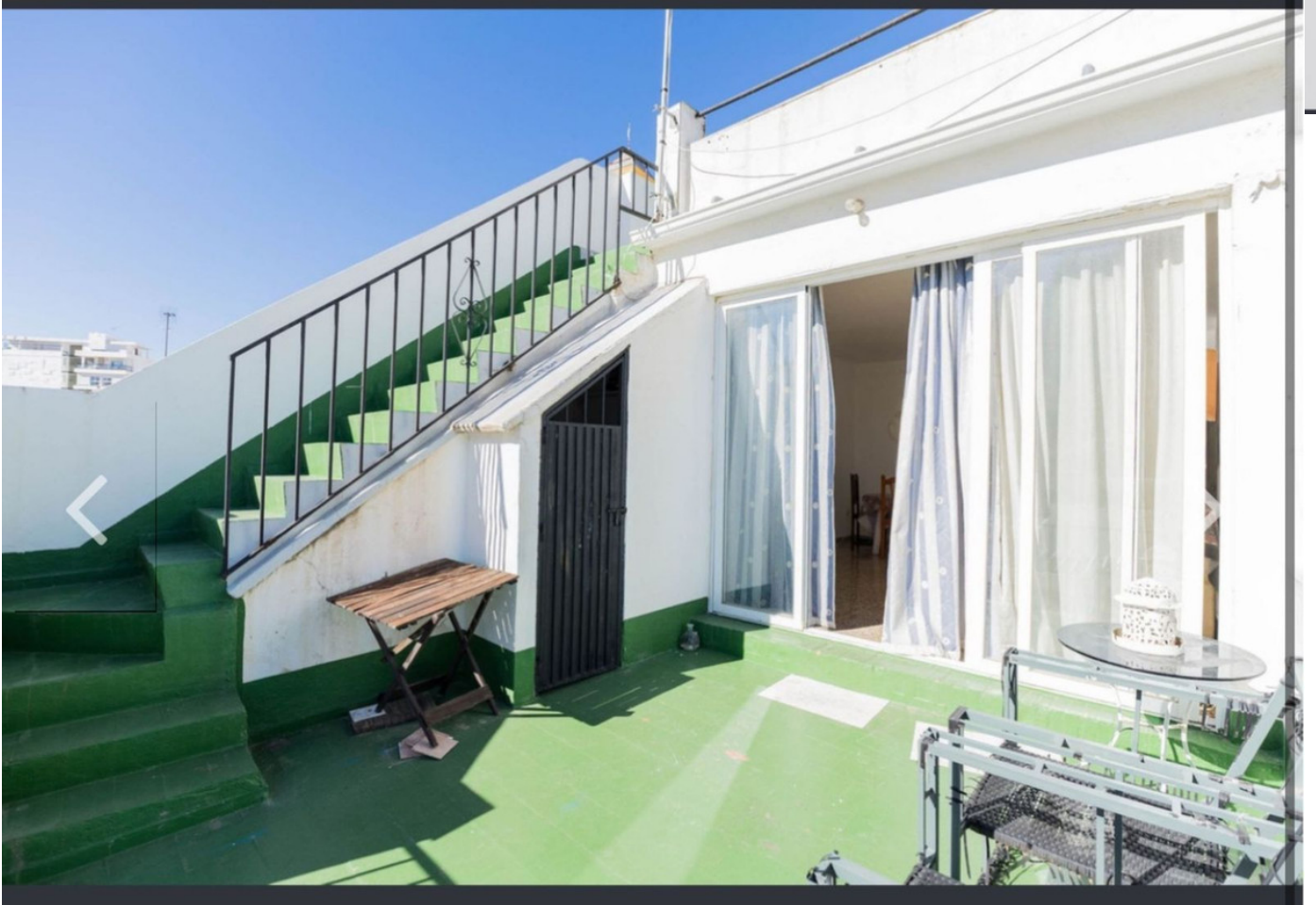
Kitchen

- ✓ Fully Fitted















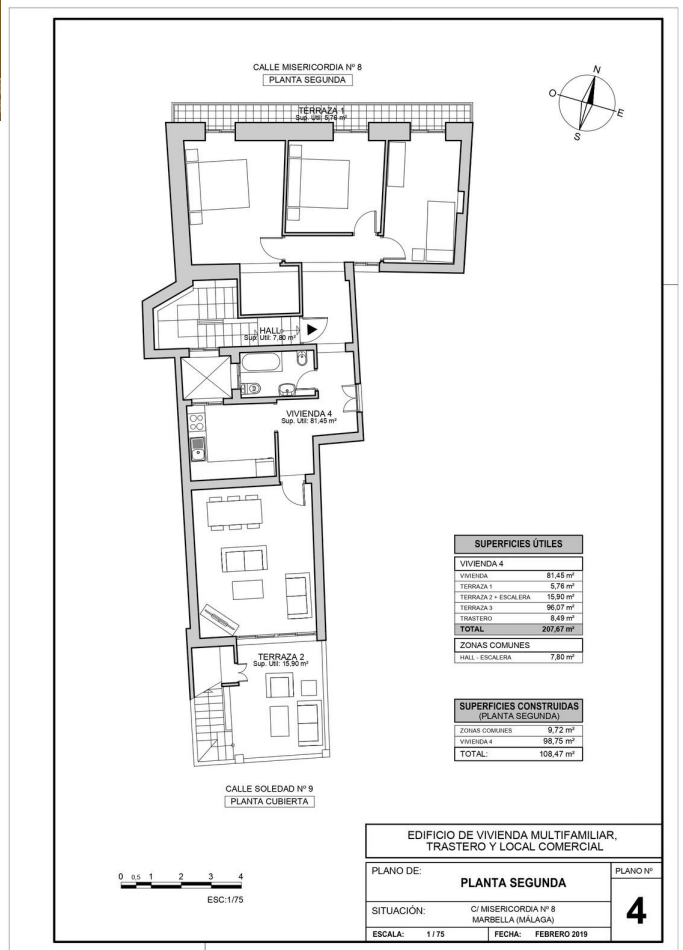
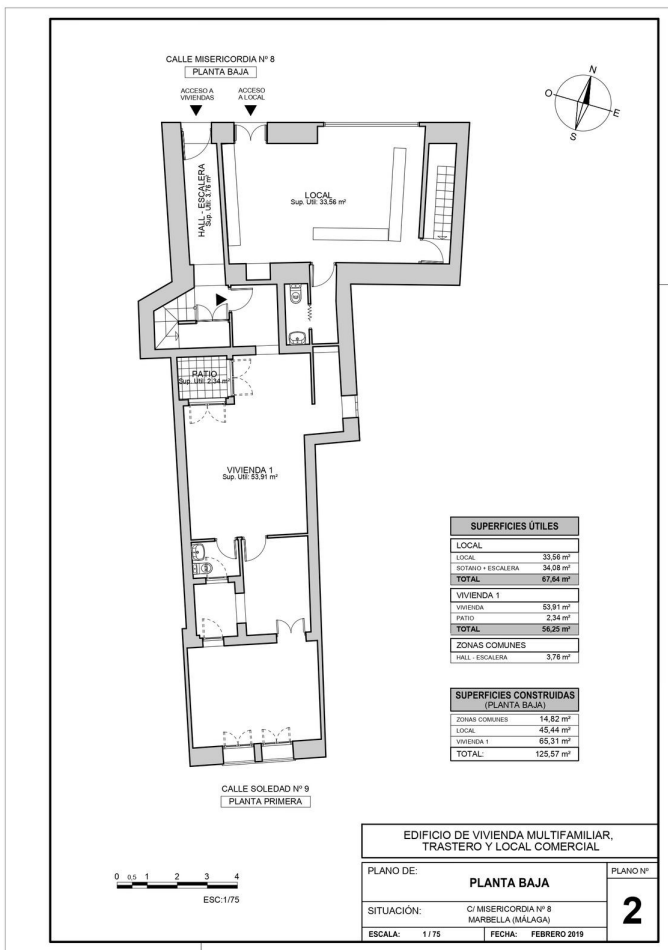




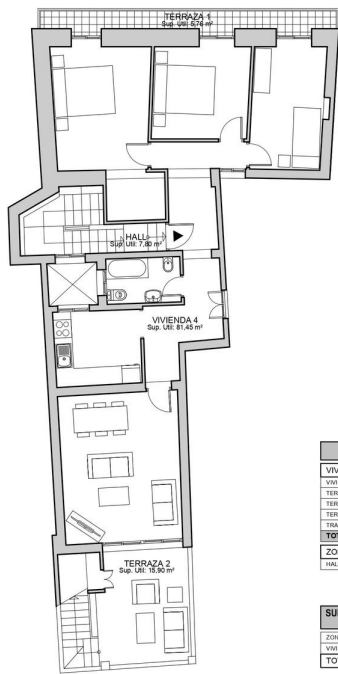








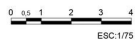
CALLE MISERICORDIA Nº 8
PLANTA SEGUNDA



SUPERFICIES ÚTILES	
VIVIENDA 4	81,45 m ²
TERRAZA 1	5,76 m ²
TERRAZA 2 + ESCALERA	15,90 m ²
TERRAZA 3	96,07 m ²
TRASTERO	8,49 m ²
TOTAL:	207,67 m²
ZONAS COMUNES	
HALL - ESCALERA	7,80 m ²

SUPERFICIES CONSTRUIDAS (PLANTA SEGUNDA)	
ZONAS COMUNES	9,72 m ²
VIVIENDA 4	98,75 m ²
TOTAL:	108,47 m²

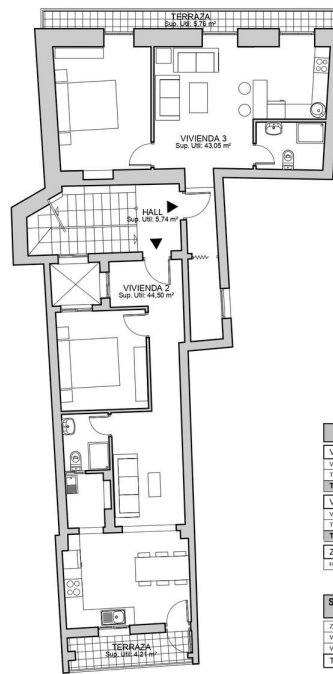
CALLE SOLEDAD Nº 9
PLANTA CUBIERTA



EDIFICIO DE VIVIENDA MULTIFAMILIAR,
TRASTERO Y LOCAL COMERCIAL

PLANO DE:	PLANTA SEGUNDA	PLANO Nº	4
SITUACIÓN:	C/ MISERICORDIA Nº 8 MARBELLA (MÁLAGA)		
ESCALA:	1/75	FECHA:	

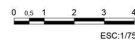
CALLE MISERICORDIA Nº 8
PLANTA PRIMERA



SUPERFICIES ÚTILES	
VIVIENDA 2	44,50 m ²
TERRAZA	4,21 m ²
TOTAL:	48,70 m²
VIVIENDA 3	43,05 m ²
TERRAZA	5,76 m ²
TOTAL:	48,80 m²
ZONAS COMUNES	
HALL - ESCALERA	5,74 m ²

SUPERFICIES CONSTRUIDAS (PLANTA PRIMERA)	
ZONAS COMUNES	13,90 m ²
VIVIENDA 2	52,22 m ²
VIVIENDA 3	53,46 m ²
TOTAL:	119,58 m²

CALLE SOLEDAD Nº 9
PLANTA PRIMERA



EDIFICIO DE VIVIENDA MULTIFAMILIAR,
TRASTERO Y LOCAL COMERCIAL

PLANO DE:	PLANTA PRIMERA	PLANO Nº	3
SITUACIÓN:	C/ MISERICORDIA Nº 8 MARBELLA (MÁLAGA)		
ESCALA:	1/75	FECHA:	









