

Sales - House - Benalmadena

3.990.000€

Benalmadena

House



5



4.5



400 m2



740 m2

CONSTRUCTION IS NEARING COMPLETION! Luxury Villa with panoramic Sea View - finished in Q1 of 2026. Brand-New Luxury Villa with Spectacular Panoramic Sea Views! - La Capellanía - Benalmádena An exceptional newbuild luxury villa in one of the most exclusive areas on the Costa del Sol. Buy now for €3.3M and personalize the villa to your taste — or purchase completed for €3.5M. A unique, top-quality home offering breathtaking sea views, modern design, and the latest technology. About the Villa: - 5 large bedrooms, all with terrace access 4.5 modern bathrooms - Open-plan kitchen with stunning sea views - Living room on each floor - 2.6m floor-to-ceiling heat-protected windows - 3.5m high ceilings - 2.4m premium modern doors - Pergola & fully equipped outdoor kitchen - Heated infinity pool & jacuzzi - Solar panels or option to build a solarium - Built: 400 m² - Terraces: 300 m² - Plot size: 730 m² The Area - La Capellanía: La Capellanía is one of the most desirable residential areas in Benalmádena. - Quiet, green, and well maintained, with only 5 villas on a one-way street, offering privacy and exclusivity. - Less than 5 minutes to restaurants, Carrefour supermarket & Carvajal Beach - 6 minutes to the 5-star Hilton Hotel & Higuera Sports Club, featuring paddle courts, spa, gym, indoor & outdoor pools, beach club & restaurants - Excellent area for families - Close to international & Scandinavian schools - Near Fuengirola & Benalmádena Pueblo - Only 20 minutes from Málaga Airport - Easy Viewings Available Contact us today for more details or to arrange a visit!

Setting

- ✓ Close To Shops
- ✓ Close To Sea
- ✓ Close To Town
- ✓ Close To Schools

Climate Control

- ✓ Air Conditioning

Kitchen

- ✓ Fully Fitted

Utilities

- ✓ Electricity

Orientation

- ✓ South

Views

- ✓ Sea
- ✓ Mountain
- ✓ Port
- ✓ Panoramic
- ✓ Garden

Garden

- ✓ Private

Category

- ✓ Holiday Homes
- ✓ Investment
- ✓ Luxury
- ✓ Resale
- ✓ Contemporary

Condition

- ✓ Excellent
- ✓ New Construction

Features

- ✓ Covered Terrace
- ✓ Fitted Wardrobes
- ✓ Near Transport
- ✓ Private Terrace
- ✓ Satellite TV
- ✓ WiFi
- ✓ Storage Room
- ✓ Utility Room
- ✓ Fiber Optic

Security

- ✓ Alarm System

Pool

- ✓ Private

Furniture

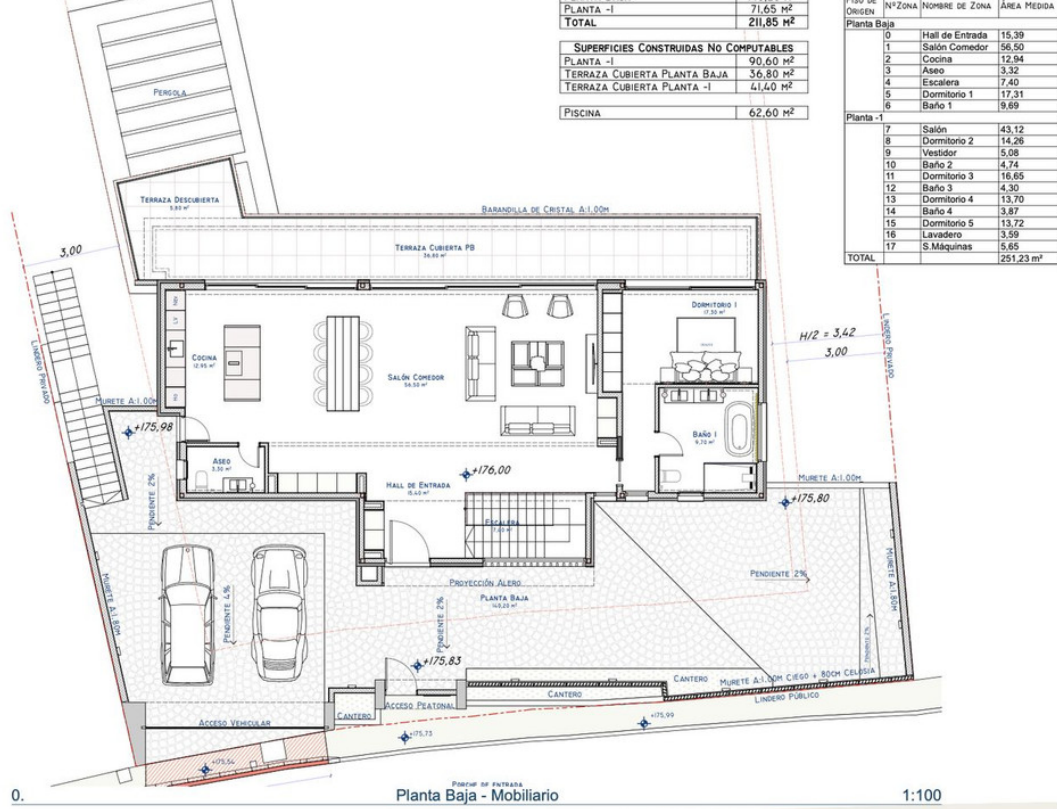
- ✓ Optional

Parking

- ✓ More Than One
- ✓ Private







PLANTA -I	71,65 m ²
TOTAL	211,85 m²
SUPERFICIES CONSTRUIDAS NO COMPUTABLES	
PLANTA -I	90,60 m ²
TERRAZA CUBIERTA PLANTA BAJA	36,80 m ²
TERRAZA CUBIERTA PLANTA -I	41,40 m ²
PISCINA	62,60 m²

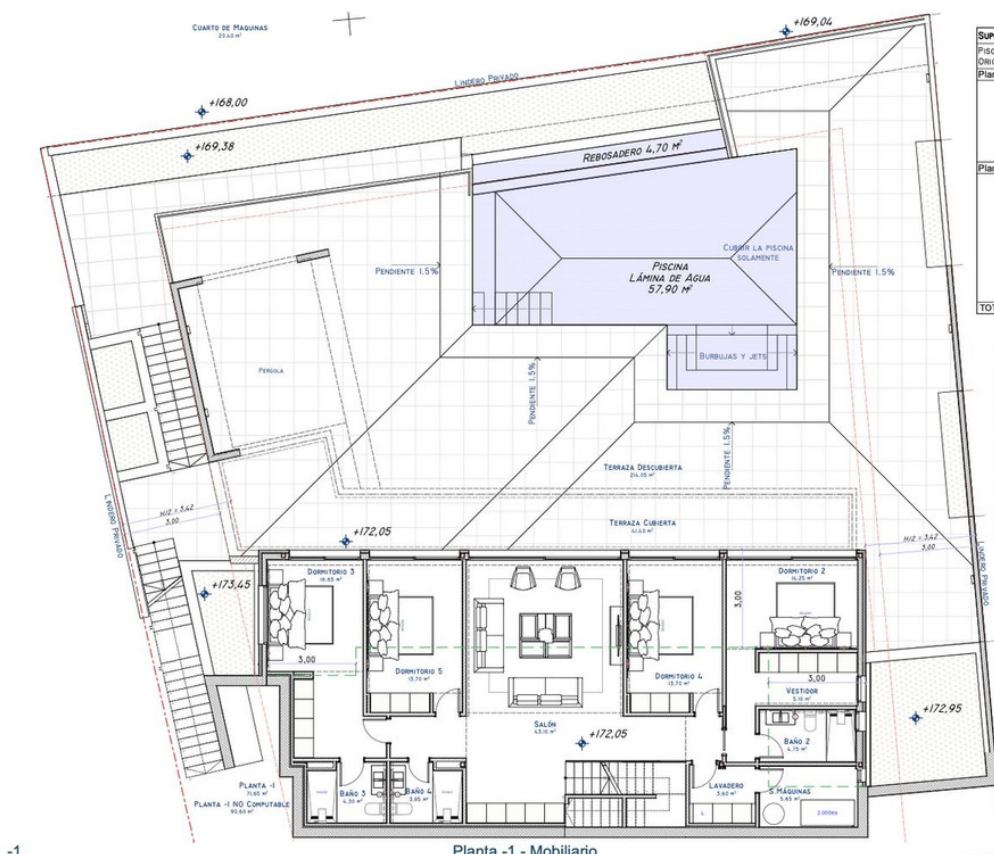
ORIGEN	Nº ZONA	NOMBRE DE ZONA	ÁREA MEDIDA
Planta Baja			
0	Hall de Entrada	15,39	
1	Salón Comedor	56,50	
2	Cocina	12,94	
3	Aseo	3,32	
4	Escalera	7,40	
5	Dormitorio 1	17,31	
6	Baño 1	9,69	
Planta -1			
7	Salón	43,12	
8	Dormitorio 2	14,26	
9	Vestidor	5,08	
10	Baño 2	4,74	
11	Dormitorio 3	16,65	
12	Baño 3	4,30	
13	Dormitorio 4	13,70	
14	Baño 4	3,87	
15	Dormitorio 5	13,72	
16	Lavadero	3,59	
17	S.Máquinas	5,65	
TOTAL		251,23 m²	

0. **Planta Baja - Mobiliario** 1:100

M&C Arquitectura
 Av. Juan Luis Pereda 42 Conjunto Las Morcas
 Local 10, Benalmádena Puerto - Málaga
 info@m-c-arq.com // TEL/FAX: 952 56 92 89
 Arquitecto: Sebastián Muchico Piñero,
 Colaborador: Rodolfo Salvador Cáputa.

PROYECTO BÁSICO Y DE EJECUCIÓN para Vivienda Unifamiliar Aislada y Piscina, sita en Calle Washington 9, Capellania, Benalmádena (29630), Málaga.
 Propiedad: Arnh Jannik Rankenberg Hansen
PLANO de Planta Baja Modificada

NOVIEMBRE 2023
B.5
 ESCALA 1:100



PISO DE ORIGEN	Nº ZONA	NOMBRE DE ZONA	ÁREA MEDIDA
Planta Baja			
0	Hall de Entrada	15,39	
1	Salón Comedor	56,50	
2	Cocina	12,94	
3	Aseo	3,32	
4	Escalera	7,40	
5	Dormitorio 1	17,31	
6	Baño 1	9,69	
Planta -1			
7	Salón	43,12	
8	Dormitorio 2	14,26	
9	Vestidor	5,08	
10	Baño 2	4,74	
11	Dormitorio 3	16,65	
12	Baño 3	4,30	
13	Dormitorio 4	13,70	
14	Baño 4	3,87	
15	Dormitorio 5	13,72	
16	Lavadero	3,59	
17	S.Máquinas	5,65	
TOTAL		251,23 m²	

SUPERFICIES CONSTRUIDAS COMPUTABLES	
PLANTA BAJA	160,20 m ²
PLANTA -I	71,65 m ²
TOTAL	231,85 m²

SUPERFICIES CONSTRUIDAS NO COMPUTABLES	
PLANTA -I	90,60 m ²
TERRAZA CUBIERTA	36,80 m ²
TERRAZA CUBIERTA PLANTA -I	41,40 m ²
PISCINA	62,60 m²

-1. **Planta -1 - Mobiliario** 1:100

M&C Arquitectura
 Av. Juan Luis Pereda 42 Conjunto Las Morcas
 Local 10, Benalmádena Puerto - Málaga
 info@m-c-arq.com // TEL/FAX: 952 56 92 89
 Arquitecto: Sebastián Muchico Piñero,
 Colaborador: Rodolfo Salvador Cáputa.

PROYECTO BÁSICO Y DE EJECUCIÓN para Vivienda Unifamiliar Aislada y Piscina, sita en Calle Washington 9, Capellania, Benalmádena (29630), Málaga.
 Propiedad: Arnh Jannik Rankenberg Hansen
PLANO de Planta -1 Modificada

NOVIEMBRE 2023
B.6
 ESCALA 1:100















