

Sales - Apartment - Elviria

635.000€

Elviria

Apartment



2



2



104 m2

Welcome to your new home just 300 metres from one of Marbella's finest beaches, where modern comfort meets relaxed coastal living. This beautiful ground-floor apartment is located in an elegant and contemporary residential community designed to offer convenience, privacy, and quality of life. With 104 m² of built area, the apartment features two spacious bedrooms and two modern bathrooms, thoughtfully designed for comfort and functionality. The open-plan kitchen and living area creates a bright and inviting space, ideal for both everyday living and entertaining. One of the standout features of this property is the enclosed porch, which opens onto a private garden of 39 m²—a perfect outdoor retreat for sunny breakfasts, quiet evenings, or simply enjoying Marbella's exceptional climate in complete privacy. The property also includes an underground parking space and a storage room, adding extra convenience and practicality. Community Amenities Residents enjoy access to excellent communal facilities, including: A swimming pool to relax and cool off A fully equipped gym A coworking space, ideal for remote working or meetings Ideally situated in a peaceful beachside area of Marbella, the apartment is within walking distance of supermarkets, restaurants, international schools, and public transport, ensuring everything you need is close at hand. Whether you are searching for a permanent residence, a holiday home, or a smart investment opportunity on the Costa del Sol, this property offers an exceptional lifestyle in a prime location.

Setting

- ✓ Beachside
- ✓ Close To Golf
- ✓ Close To Shops
- ✓ Close To Schools

Pool

- ✓ Communal

Views

- ✓ Garden

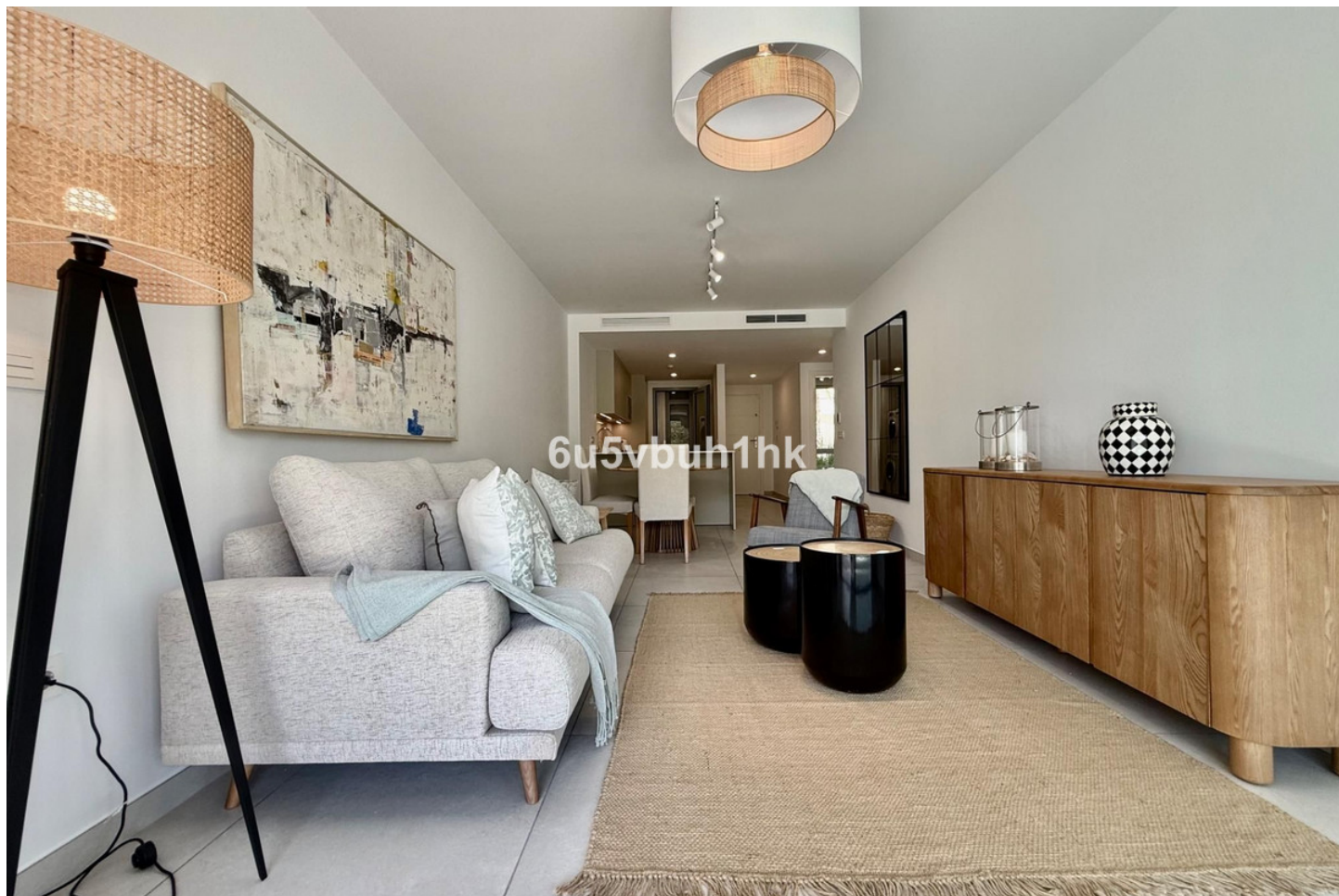
Features

- ✓ Covered Terrace
- ✓ Near Transport
- ✓ Private Terrace
- ✓ Gym
- ✓ Storage Room
- ✓ Ensuite Bathroom

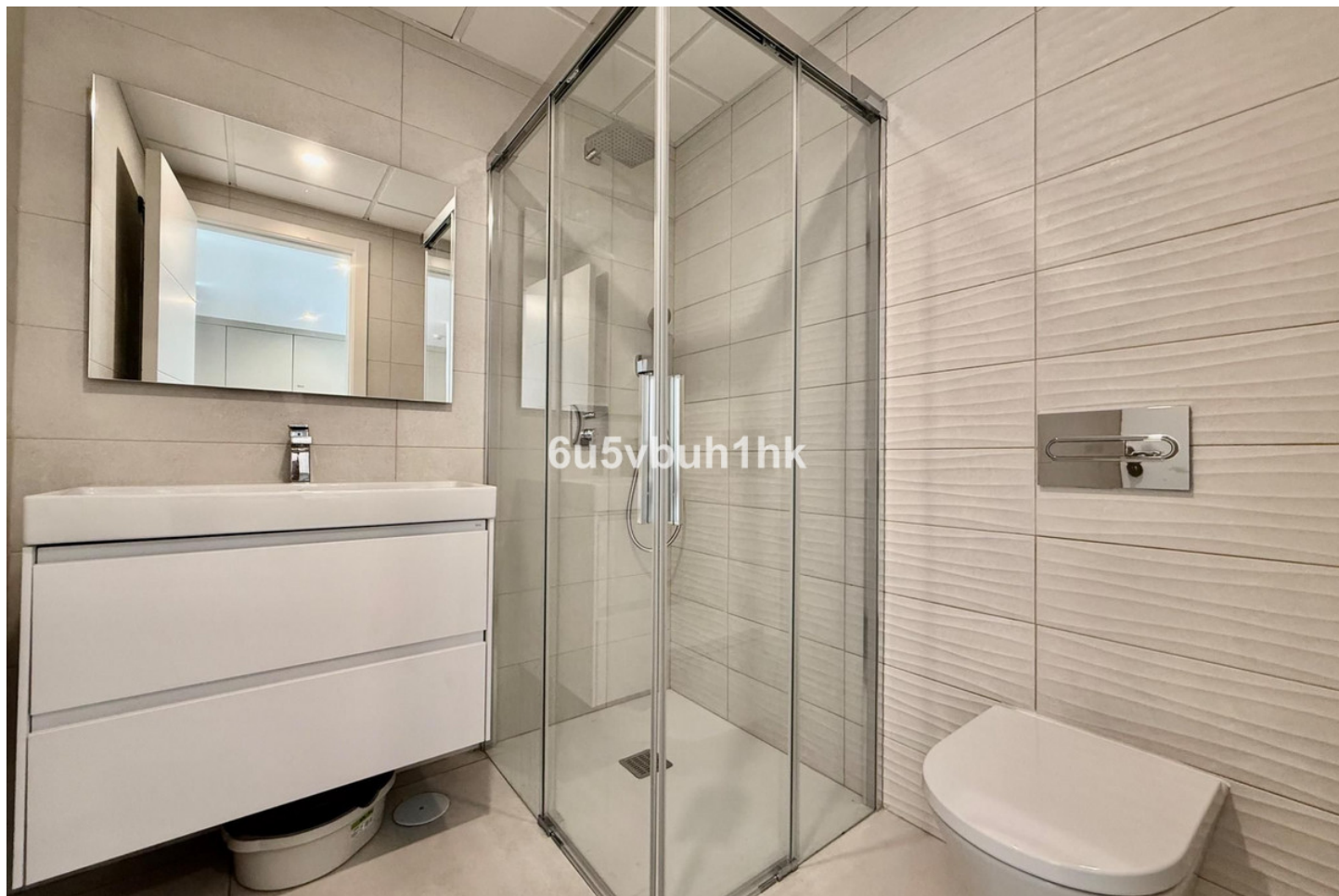
Security

- ✓ Electric Blinds

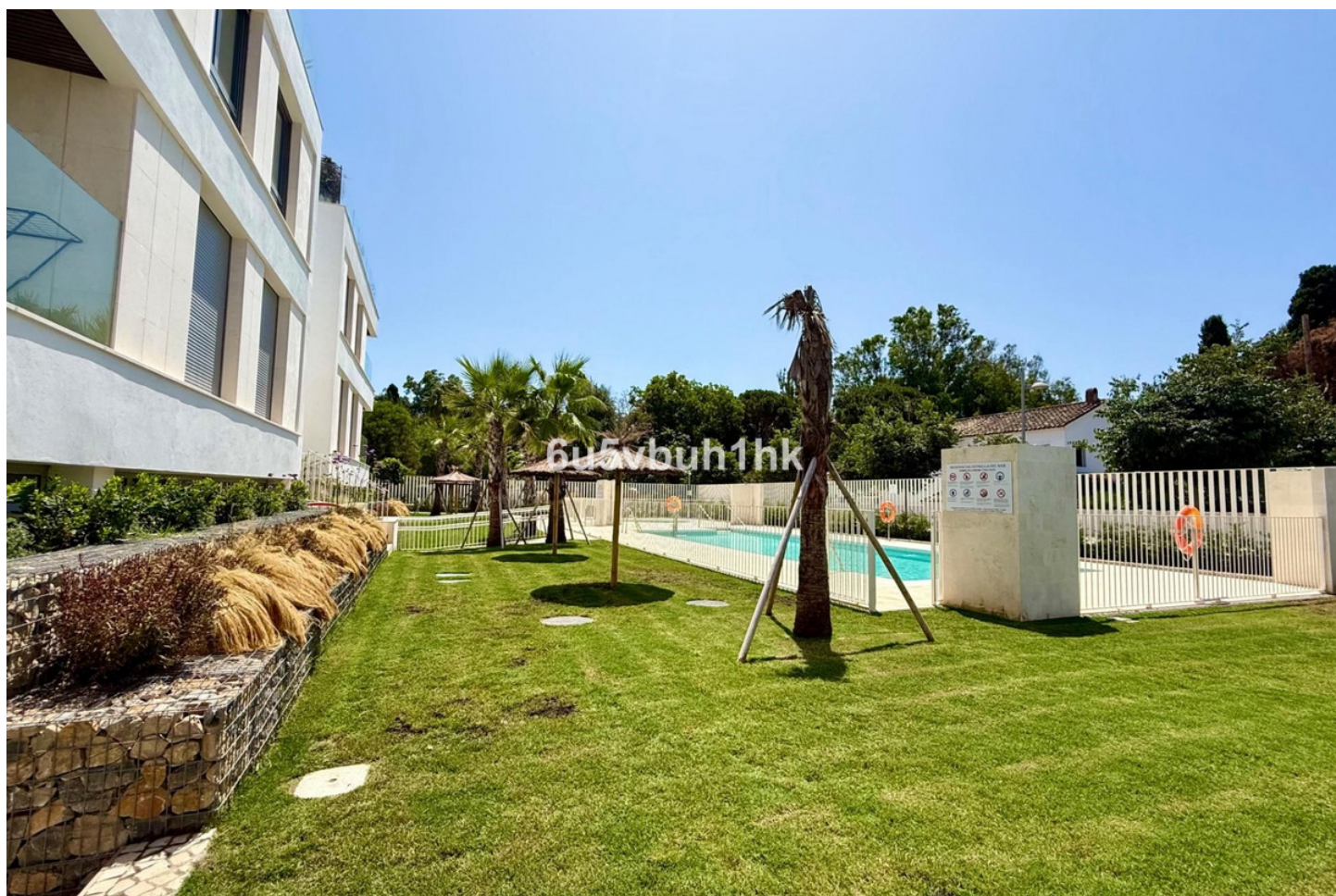




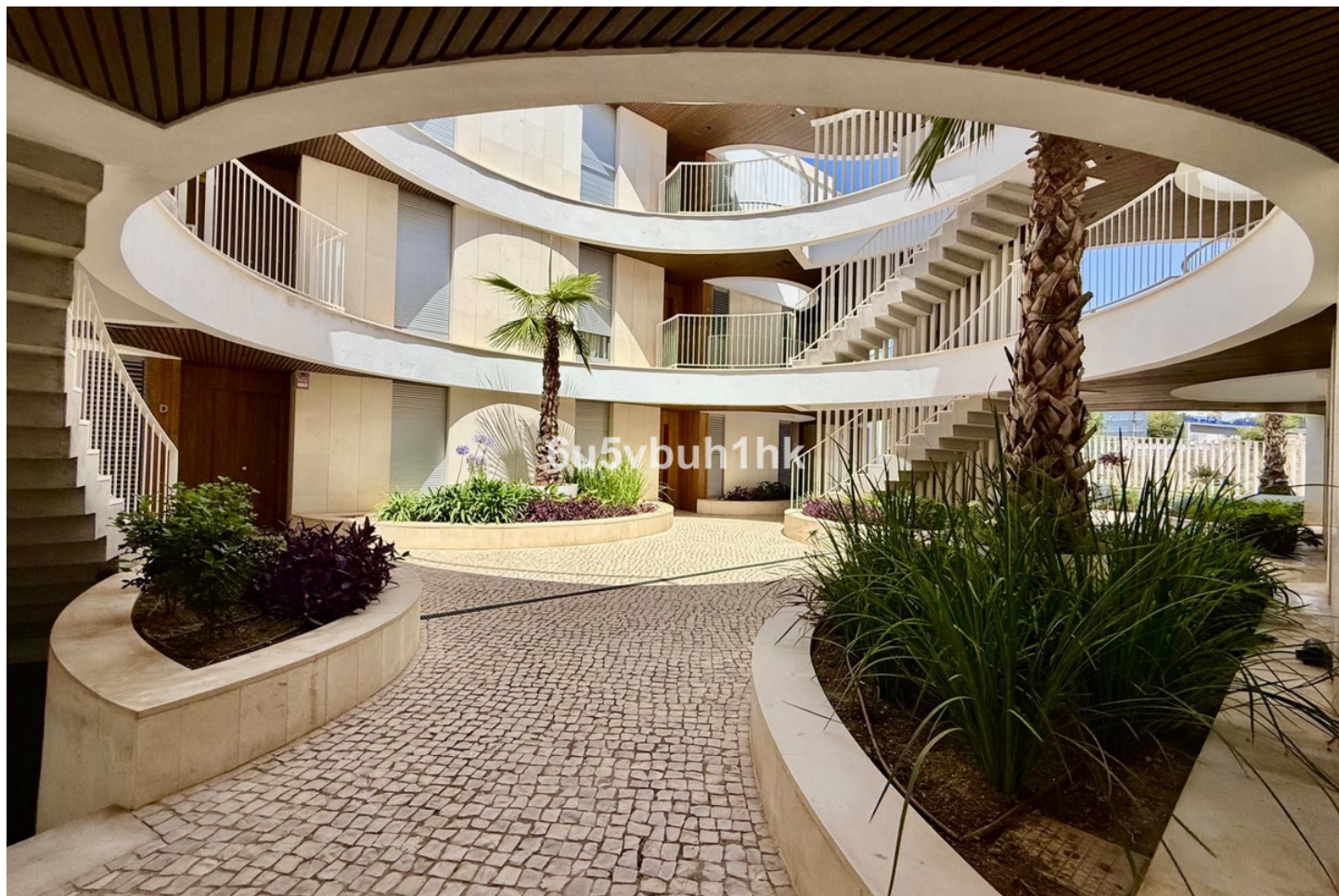














6u5vbuh1hk



FLOOR PLAN

GROSS INTERNAL AREA
FLOOR PLAN 76.1 sq.m.
EXCLUDED AREAS : PATIO 14.1 sq.m.
TOTAL : 76.1 sq.m.
SIZES AND DIMENSIONS ARE APPROXIMATE, ACTUAL MAY VARY.