

## Sales - Apartment - Calahonda

**285.000€**

**Calahonda**

**Apartment**

**Community: 1,236 EUR / year   IBI: 238 EUR / year**

**Rubbish: 77 EUR / year**



**2**



**1**



**52 m2**

"Discover your new home by the sea! This spectacular 100% renovated apartment offers a modern and elegant design, with excellent quality materials that guarantee a cozy and functional environment. With 36 m² built, the property has a master bedroom with a built-in dressing room and a second room ideal as an office or adaptable to a second bedroom. The kitchen, integrated into the bright main living room, has been designed by Cocinas "SCHMIDT", which adds a touch of distinction to this space. Imagine enjoying incredible views of the sea and the African coast from the 6th floor of this building with an elevator. The South-West orientation allows natural light to flood every corner, creating a warm and pleasant atmosphere. In addition, the hot/cold air conditioning in each room ensures your comfort throughout the year. The location is unbeatable, with access to all the necessary services for your day-to-day life and adapted for people with reduced mobility. The house also includes a full bathroom and built-in wardrobes to maximize storage space. And for those days of relaxation, you can enjoy the pool and the community garden. Don't miss the opportunity to live in this paradise!"

### Setting

- ✓ Beachfront
- ✓ Beachside
- ✓ Front Line Beach Complex

### Climate Control

- ✓ Air Conditioning

### Kitchen

- ✓ Fully Fitted

### Utilities

- ✓ Electricity
- ✓ Drinkable Water

### Orientation

- ✓ South West

### Views

- ✓ Sea
- ✓ Mountain
- ✓ Beach
- ✓ Pool

### Garden

- ✓ Communal

### Category

- ✓ Beachfront
- ✓ Luxury

### Condition

- ✓ Excellent
- ✓ Recently Renovated

### Features

- ✓ Lift
- ✓ Fitted Wardrobes
- ✓ Access for people with reduced mobility
- ✓ Double Glazing
- ✓ Restaurant On Site

### Security

- ✓ Gated Complex

### Pool

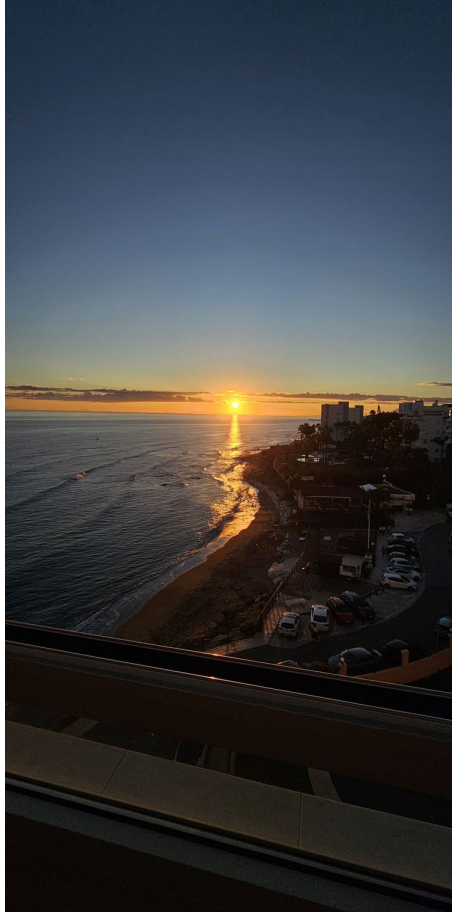
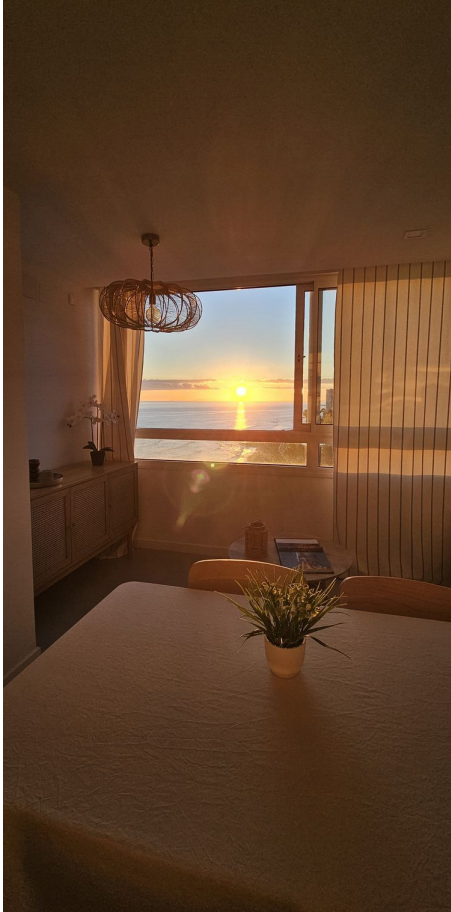
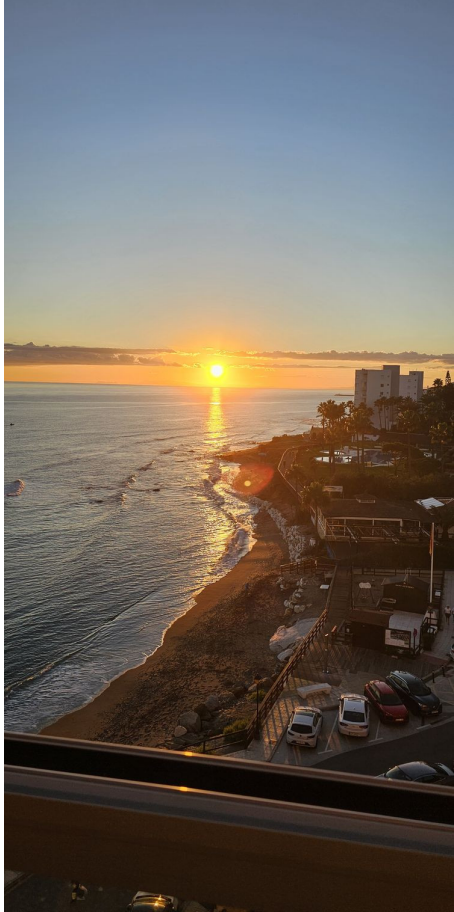
- ✓ Communal

### Furniture

- ✓ Fully Furnished

### Parking

- ✓ Street



















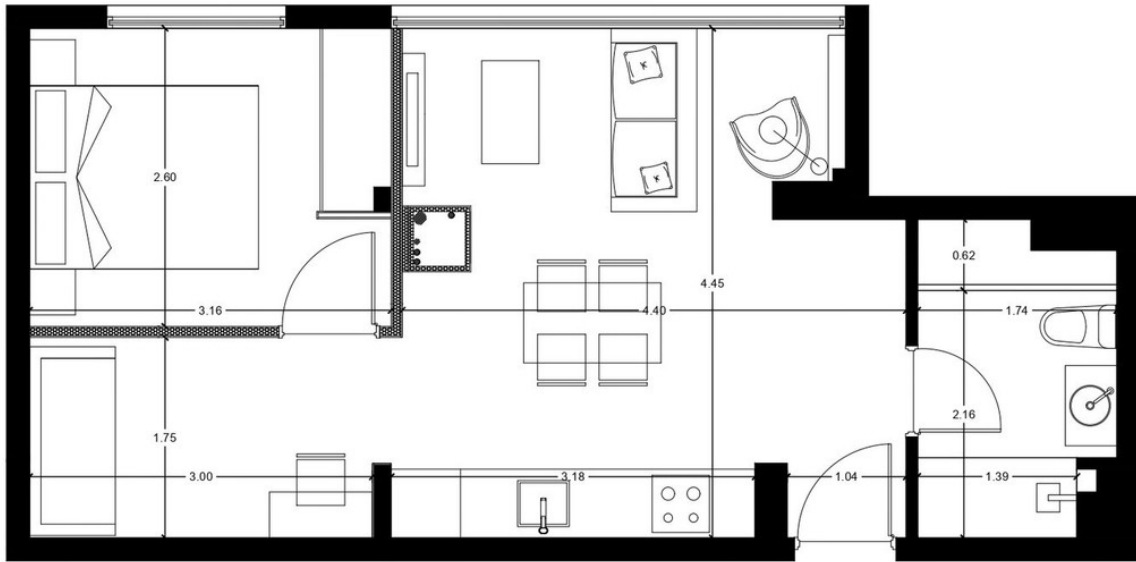












REFERENCIAS:

**EDIFICIO  
CALAHONDA**

**CALAHONDA**  
MUJAS

DOCUMENTACION DE PROYECTO

PLANO:  
PLANTA BAJA CON MEDIDAS

ESCALA: 1:50

**Arq-02**





