

Sales - House - La Mairena

2.400.000€

La Mairena

House

Community: 588 EUR / year

IBI: 1,733 EUR / year



3



3



328 m2



2621 m2

This newly built villa offers a unique combination of modern design, privacy and breathtaking open views over the surrounding landscape. Situated in one of the most peaceful and natural settings of La Mairena, it is the perfect retreat for those seeking both tranquility and exclusivity. With 328 m² of built space on a generous 2,621 m² plot, the property has been designed to maximize light, comfort and connection with nature. The spacious interiors include three bedrooms, two with en-suite bathrooms, plus a third full bathroom. The open-plan kitchen integrates seamlessly with the spectacular double-height living area, creating an impressive central space for everyday life and entertaining. Large terraces and porches extend the living area outdoors, while the infinity pool and jacuzzi take full advantage of the panoramic views. Every corner of this villa has been conceived to combine style, functionality and a strong sense of wellbeing. A truly contemporary home where luxury meets nature - ready to be enjoyed.

Setting

- ✓ Country
- ✓ Close To Golf
- ✓ Close To Schools
- ✓ Close To Forest

Climate Control

- ✓ Air Conditioning
- ✓ Fireplace
- ✓ U/F Heating

Kitchen

- ✓ Fully Fitted

Utilities

- ✓ Electricity
- ✓ Drinkable Water
- ✓ Telephone

Orientation

- ✓ North
- ✓ North East
- ✓ East

Views

- ✓ Mountain
- ✓ Panoramic
- ✓ Garden
- ✓ Pool
- ✓ Courtyard
- ✓ Forest

Garden

- ✓ Private

Category

- ✓ Luxury
- ✓ Contemporary

Condition

- ✓ Excellent
- ✓ New Construction

Features

- ✓ Covered Terrace
- ✓ Fitted Wardrobes
- ✓ Private Terrace
- ✓ Solarium
- ✓ WiFi
- ✓ Storage Room
- ✓ Ensuite Bathroom
- ✓ Access for people with reduced mobility
- ✓ Jacuzzi
- ✓ Barbeque
- ✓ Double Glazing
- ✓ Domotics
- ✓ Fiber Optic

Security

- ✓ Electric Blinds
- ✓ Entry Phone
- ✓ Alarm System

Pool

- ✓ Private

Furniture

- ✓ Fully Furnished

Parking

- ✓ Open
- ✓ Private



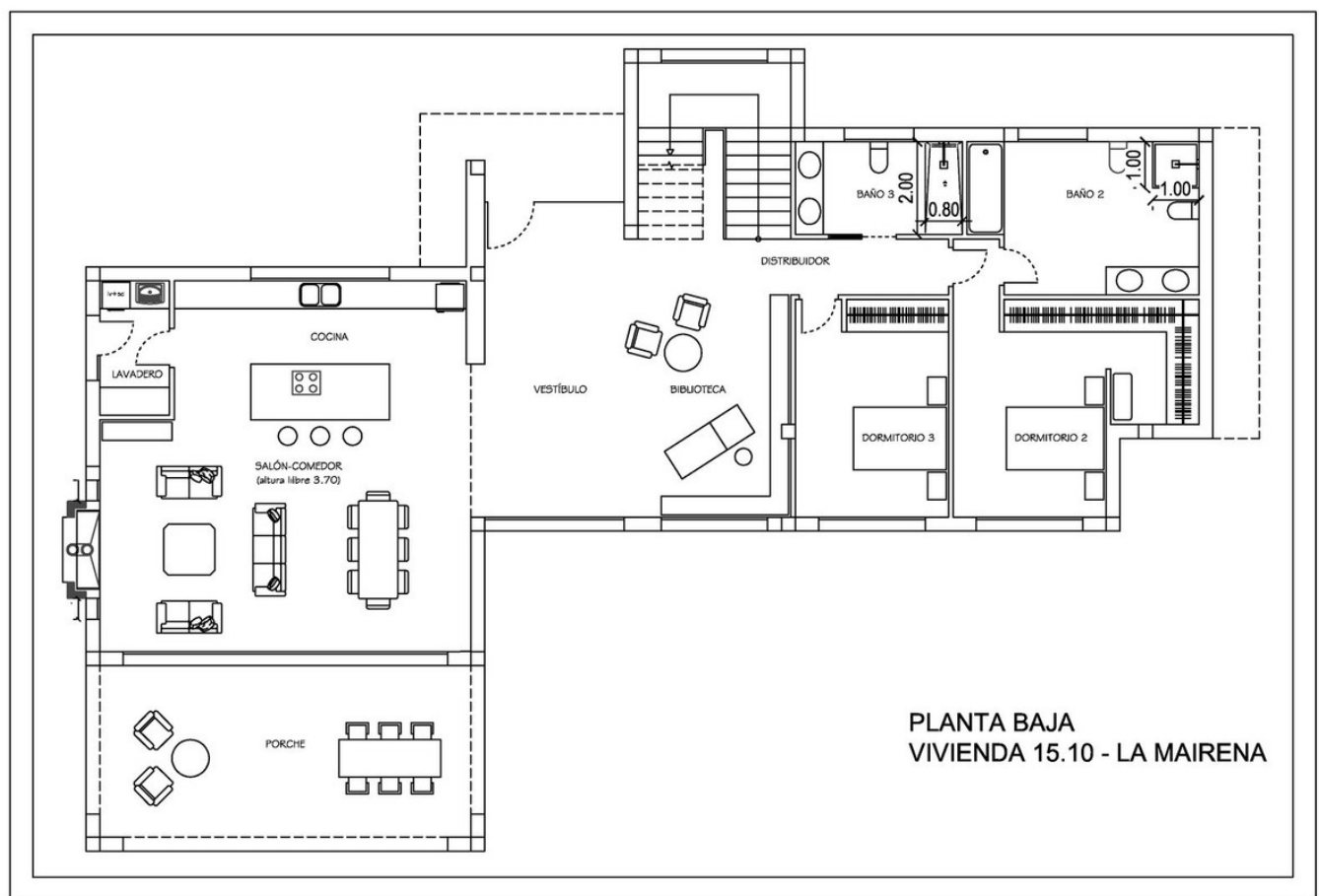
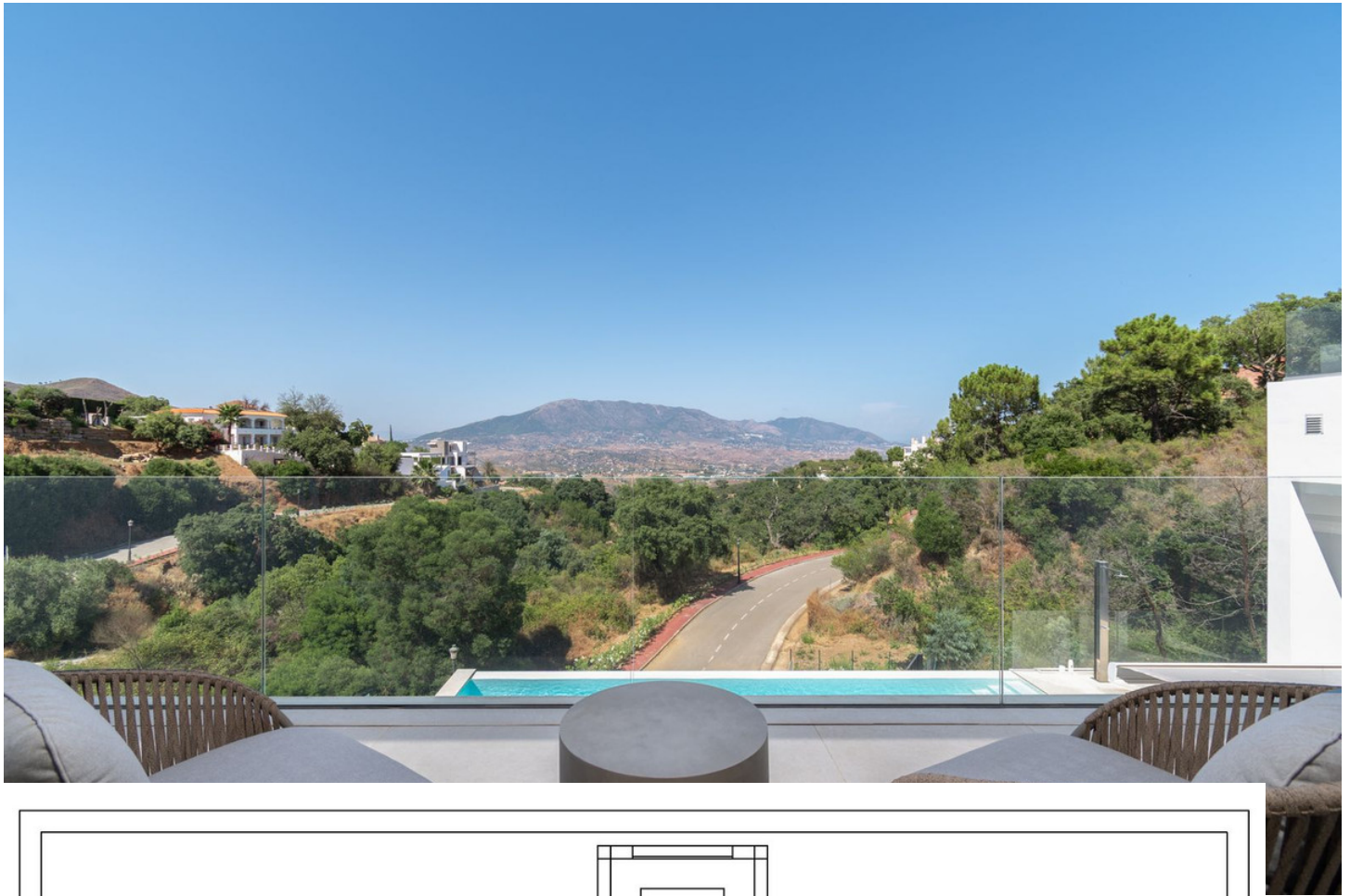


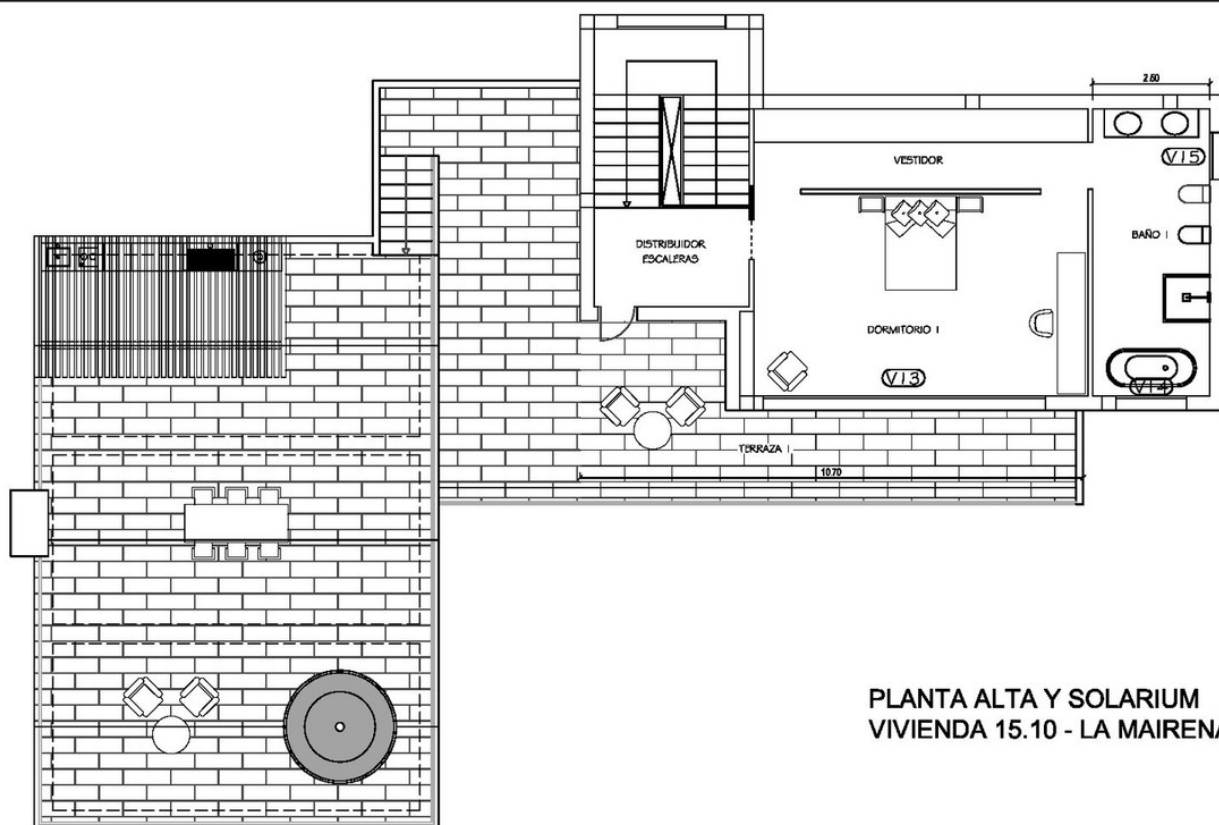












PLANTA ALTA Y SOLARIUM
VIVIENDA 15.10 - LA MAIRENA