

## Sales - Apartment - Río Real

495.000€

Río Real

Apartment

Community: 1,608 EUR / year

IBI: 850 EUR / year



3



2



127 m2

Discover this stunning, fully renovated apartment, designed for modern living. Featuring a brand-new kitchen, stylish bathrooms, and contemporary furnishings, including a chic outdoor terrace set, this home is move-in ready. Equipped with top-tier appliances (refrigerator, oven, dishwasher, washer, iron, linens, and more), it offers unparalleled convenience. Enjoy underfloor heating in the bathrooms, efficient air conditioning, three spacious bedrooms, two pristine bathrooms, and a private terrace with direct access to inviting swimming pools. Additional perks include dedicated storage and a private parking space. Nestled in the serene, lush Urbanización Las Lomas del Río Real, this prime location provides easy access to the beach, premier golf courses, La Cañada shopping, Marbella's vibrant center, and top schools, blending tranquility with connectivity. Community Fees: 134 euros per month. IBI Fees: 850 euros per year. Indoor Built Area: 88m². Covered Terrace: 23m². Parking Space: 12m². Storage Room: 4m².

### Setting

- ✓ Suburban
- ✓ Close To Golf
- ✓ Close To Sea
- ✓ Close To Town
- ✓ Close To Schools
- ✓ Urbanisation

### Climate Control

- ✓ Air Conditioning
- ✓ Hot A/C
- ✓ Cold A/C
- ✓ Central Heating

### Kitchen

- ✓ Fully Fitted

### Category

- ✓ Golf
- ✓ Holiday Homes
- ✓ Investment
- ✓ Luxury
- ✓ Resale

### Orientation

- ✓ East
- ✓ South East
- ✓ South

### Views

- ✓ Garden
- ✓ Pool

### Garden

- ✓ Communal
- ✓ Landscaped

### Condition

- ✓ Excellent
- ✓ Recently Renovated

### Features

- ✓ Lift
- ✓ Fitted Wardrobes
- ✓ Private Terrace
- ✓ Storage Room
- ✓ Utility Room
- ✓ Ensuite Bathroom
- ✓ Marble Flooring
- ✓ Double Glazing

### Security

- ✓ Gated Complex
- ✓ Entry Phone

### Pool

- ✓ Communal
- ✓ Children's Pool

### Furniture

- ✓ Fully Furnished

### Parking

- ✓ Underground
- ✓ Garage
- ✓ Covered









































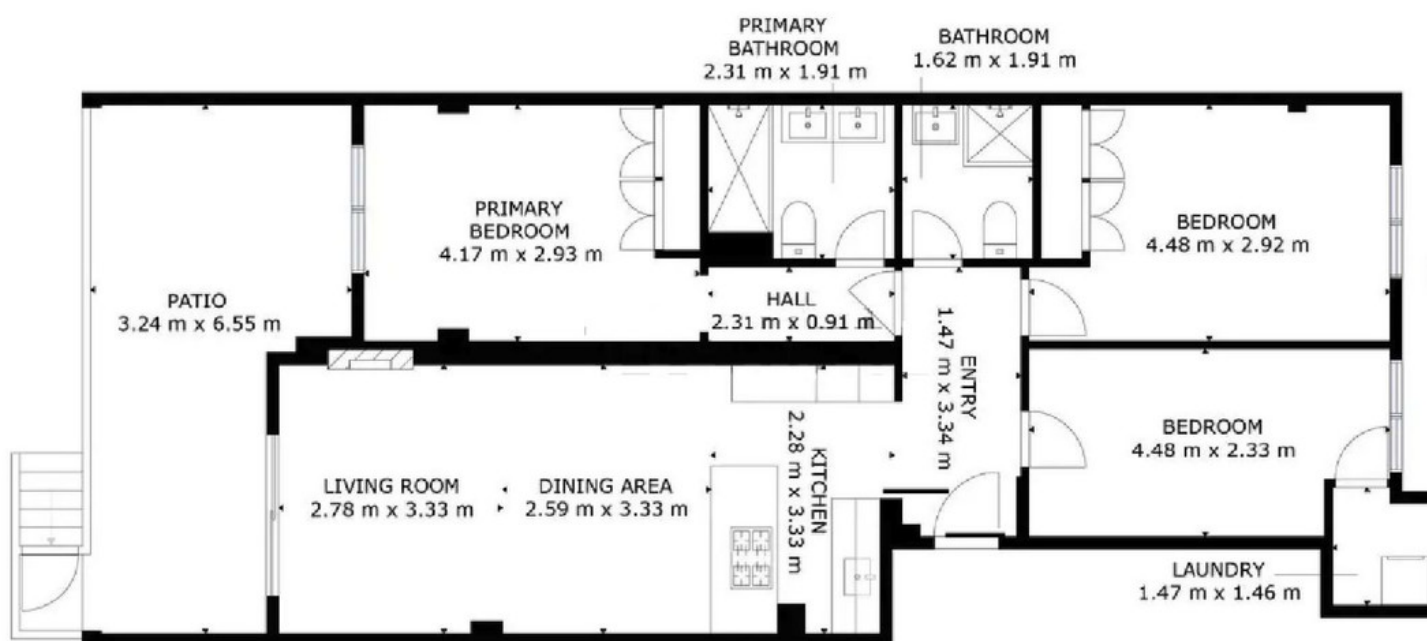












Área útil interna: 81m<sup>2</sup>

Área de la terraza útil 17m<sup>2</sup>

Todas estas dimensiones son aproximadas.